



RENTA VARIABLE

Índices Bursátiles y ETFs

| BOLSAS DE EE.UU. | | | | | | | | | |
|--|--------|------------|-------------|-------|-------|-------|-------|------|------------|
| | Moneda | Último* | % YTD | % 1Y | % MTD | % 1M | % WTD | % 1D | |
| Dow Jones Industrial Average | USD | 33,407.58 | 0.8 | 11.6 | -0.3 | -3.0 | -0.3 | 0.9 | |
| NASDAQ 100 | USD | 14,973.24 | 36.9 | 30.4 | 1.8 | -2.6 | 1.8 | 1.7 | |
| Nasdaq Composite | USD | 13,431.34 | 28.3 | 21.3 | 1.6 | -3.2 | 1.6 | 1.6 | |
| S&P 500 Index | USD | 4,308.50 | 12.2 | 15.1 | 0.5 | -3.5 | 0.5 | 1.2 | |
| <i>*Moneda local, Cierre del día anterior</i> | | | | | | | | | |
| ETFs (en USD) | | | | | | | | | |
| | Ticker | Último* | D.Yield (%) | % YTD | % 1Y | % MTD | % WTD | % 1D | Volat. 90D |
| SPDR S&P 500 ETF Trust | SPY | 429.54 | 1.5 | 12.3 | 15.1 | 0.5 | 0.5 | 1.2 | 11.2 |
| Consumer Discretionary SPDR Fund | XLY | 160.61 | 0.9 | 24.3 | 10.3 | -0.2 | -0.2 | 0.7 | 18.5 |
| Consumer Staples Select Sector SPDR | XLP | 66.67 | 2.8 | -10.6 | -1.2 | -3.1 | -3.1 | -0.6 | 10.3 |
| Energy Select Sector SPDR Fund | XLE | 85.73 | 3.5 | -2.0 | 4.0 | -5.2 | -5.2 | 0.6 | 19.9 |
| Financial Select Sector SPDR Fund | XLK | 33.04 | 2.0 | -3.4 | 4.4 | -0.4 | -0.4 | 0.9 | 12.4 |
| Health Care Select Sector SPDR | XLV | 130.01 | 1.6 | -4.3 | 3.8 | 1.0 | 1.0 | 1.0 | 10.4 |
| Industrial Select Sector SPDR Fund | XLI | 100.78 | 1.7 | 2.6 | 16.1 | -0.6 | -0.6 | 1.4 | 13.0 |
| Materials Select Sector SPDR | XLB | 77.99 | 2.1 | 0.4 | 9.5 | -0.7 | -0.7 | 0.9 | 15.4 |
| Technology Select Sector SPDR Fund | XLK | 168.22 | 0.8 | 35.2 | 33.6 | 2.6 | 2.6 | 1.9 | 17.2 |
| Utilities Select Sector SPDR Fund | XLU | 57.25 | 3.7 | -18.8 | -12.1 | -2.9 | -2.9 | 1.4 | 17.4 |
| iShares US Real Estate ETF | IYR | 76.77 | 3.3 | -8.8 | -4.7 | -1.8 | -1.8 | 0.2 | 15.8 |
| Ishares Trust Dj Us Telecom | IYZ | 20.78 | 2.7 | -7.4 | -4.8 | -2.4 | -2.4 | 0.3 | 15.4 |
| <i>*Moneda local, Cierre del día anterior</i> | | | | | | | | | |
| BOLSAS DE EUROPA | | | | | | | | | |
| | Moneda | Último* | % YTD | % 1Y | % MTD | % 1M | % WTD | % 1D | |
| CAC-40 Paris, Francia | EUR | 7,040.36 | 9.1 | 18.9 | -1.0 | -1.9 | -1.0 | -0.3 | |
| DAX XETRA - Frankfurt, Alemania | EUR | 15,154.90 | 9.4 | 22.1 | -1.0 | -3.3 | -1.0 | -0.5 | |
| FTSE - 100, Reino Unido | GBP | 7,512.95 | 0.6 | 7.1 | -1.5 | 0.9 | -1.5 | 0.3 | |
| IBEX 35 - Madrid, España | EUR | 9,179.80 | 12.2 | 23.0 | -2.0 | -0.8 | -2.0 | -0.6 | |
| MIB 30 - Milán, Italia | EUR | 27,778.73 | 17.3 | 31.6 | -1.5 | -1.4 | -1.5 | -0.1 | |
| <i>*Moneda local, Cotización al 09/10/2023 7:51:18</i> | | | | | | | | | |
| BOLSAS DE ASIA, MEDIO ORIENTE y OCEANÍA | | | | | | | | | |
| | Moneda | Último* | % YTD | % 1Y | % MTD | % 1M | % WTD | % 1D | |
| Nikkei-225 - Japón | JPY | 30,994.67 | 18.8 | 13.5 | -2.7 | -6.8 | -2.7 | -0.3 | |
| Shangai Composite - China | CNY | 3,096.92 | 0.2 | 2.4 | -0.4 | -0.6 | -0.4 | -0.4 | |
| Hang Seng - Hong Kong | HKD | 17,517.40 | -11.4 | -1.3 | -1.6 | -3.8 | 0.2 | 0.2 | |
| BSE 30 - Bombay, India | INR | 65,512.39 | 8.5 | 13.4 | 0.3 | 0.2 | 0.3 | -0.7 | |
| ALL ORD - Australia | AUD | 7,157.00 | -0.9 | 2.6 | -1.3 | -2.7 | 0.2 | 0.2 | |
| MOEX Russia Ind. | RUB | 4,127.03 | 46.0 | 55.6 | 0.4 | -3.1 | 0.4 | 1.1 | |
| Turquía (XU100) | TRY | 8,354.99 | 53.7 | 138.2 | 1.6 | 3.5 | 1.6 | -1.3 | |
| <i>*Moneda local, Cierre del día</i> | | | | | | | | | |
| BOLSAS DE LATINOAMÉRICA | | | | | | | | | |
| | Moneda | Último* | % YTD | % 1Y | % MTD | % 1M | % WTD | % 1D | |
| IBOVESPA- Brasil | BRL | 114,169.63 | 4.0 | -2.9 | -2.1 | -1.6 | -2.1 | 0.8 | |
| S&P IPC - Mexico | MXN | 49,666.50 | 2.5 | 7.2 | -2.4 | -6.2 | -2.4 | 0.4 | |
| COLCAP - Colombia | COP | 1,101.97 | -14.3 | -9.5 | -1.8 | 5.3 | -1.8 | 0.9 | |
| S&P BVL - Perú | PEN | 22,238.78 | 4.3 | 9.1 | -1.3 | -3.1 | -1.3 | 1.4 | |
| S&P IGPA - Chile | CLP | 5,660.60 | 7.5 | 9.2 | -3.0 | -4.2 | -3.0 | 0.8 | |
| S&P Merval- Argentina | ARS | 628,917.74 | 211.2 | 334.8 | 11.8 | 7.7 | 11.8 | 2.6 | |
| <i>*Moneda local, Cierre del día anterior</i> | | | | | | | | | |



RENDA VARIABLE

Índices Bursátiles y ETFs

| INDICES BURSÁTILES Y ETFs (en USD) | Ticker | Moneda | Último* | % YTD | % 1Y | % MTD | % 1M | % WTD | % 1D |
|--------------------------------------|--------|--------|---------|-------|-------|-------|-------|-------|------|
| SPDR S&P Dividend ETF | SDY | USD | 113.08 | -9.6 | -2.1 | -1.7 | -6.0 | -1.7 | 0.4 |
| iShares Russell 2000 ETF | IWM | USD | 173.00 | -0.8 | -0.4 | -2.1 | -7.1 | -2.1 | 1.0 |
| Invesco QQQ Trust Series 1 | QQQ | USD | 364.70 | 37.0 | 30.4 | 1.8 | -2.7 | 1.8 | 1.7 |
| iShares MSCI Canada Index | EWC | USD | 32.77 | 0.1 | 3.1 | -2.1 | -4.4 | -2.1 | 0.9 |
| iShares MSCI EAFE ETF | EFA | USD | 68.52 | 4.4 | 18.6 | -0.6 | -3.1 | -0.6 | 1.1 |
| iShares MSCI Eurozone ETF | EZU | USD | 42.08 | 6.6 | 26.5 | -0.4 | -3.8 | -0.4 | 1.5 |
| iShares MSCI Germany ETF | EWG | USD | 26.09 | 5.5 | 27.5 | -0.4 | -4.2 | -0.4 | 1.5 |
| iShares MSCI United Kingdom ETF | EWU | USD | 31.48 | 2.7 | 17.5 | -0.5 | -0.3 | -0.5 | 1.2 |
| iShares MSCI Japan ETF | EWJ | USD | 59.38 | 9.1 | 18.0 | -1.5 | -4.6 | -1.5 | 0.3 |
| iShares MSCI Pacific ex Japan ETF | EPP | USD | 39.80 | -7.0 | 1.8 | 0.1 | -2.0 | 0.1 | 1.6 |
| iShares MSCI Hong Kong Index Fund | EWH | USD | 17.34 | -17.5 | -8.8 | 1.1 | -4.1 | 1.1 | 1.8 |
| iShares MSCI South Korea ETF | EWY | USD | 58.61 | 3.8 | 16.7 | -0.6 | -5.5 | -0.6 | 1.1 |
| iShares MSCI Australia Inc | EWA | USD | 21.42 | -3.6 | 4.7 | -0.4 | -2.0 | -0.4 | 1.6 |
| iShares MSCI Emerging Markets ETF | EEM | USD | 37.83 | -0.2 | 3.9 | -0.3 | -3.2 | -0.3 | 1.4 |
| iShares MSCI China ETF | MCHI | USD | 43.12 | -8.5 | -1.9 | -0.4 | -4.9 | -0.4 | 2.2 |
| iShares China Large-Cap Etf | FXI | USD | 26.23 | -7.3 | -2.9 | -1.1 | -5.3 | -1.1 | 2.1 |
| iShares MSCI Malaysia | EWM | USD | 20.56 | -10.0 | -0.3 | -0.1 | -1.9 | -0.1 | 1.0 |
| iShares MSCI Taiwan Index Fund | EWT | USD | 45.57 | 13.5 | 1.4 | 2.3 | 0.0 | 2.3 | 1.7 |
| iShares MSCI Turkey Inv. Market Ind. | TUR | USD | 39.49 | 6.7 | 60.1 | 2.4 | 2.5 | 2.4 | 1.2 |
| iShares MSCI Thailand ETF | THD | USD | 61.08 | -18.8 | -7.5 | -2.3 | -9.4 | -2.3 | -0.6 |
| iShares S & P Latam 40 Index Fund | ILF | USD | 24.41 | 6.6 | -5.6 | -4.5 | -5.4 | -4.5 | 1.1 |
| iShares MSCI Brazil ETF | EWZ | USD | 29.35 | 4.9 | -10.7 | -4.3 | -4.6 | -4.3 | 0.9 |
| iShares MSCI Mexico ETF | EWX | USD | 54.71 | 10.6 | 19.6 | -6.0 | -8.3 | -6.0 | 0.9 |
| iShares MSCI Chile ETF | ECH | USD | 24.68 | -8.9 | -1.0 | -5.8 | -9.9 | -5.8 | 0.6 |
| Global X MSCI Argentina ETF | ARGT | USD | 40.43 | 19.0 | 29.4 | -2.1 | -12.5 | -2.1 | 2.1 |

*Cierre del día anterior



| TREASURIES | Último | T.I.R. % | Var.bps |
|----------------------------------|--------|----------|---------|
| Treasury EE.UU. 1 mes (UST1M) | 99.59 | 5.431 | 0.0 |
| Treasury EE.UU. 2 meses (UST2M) | 99.17 | 5.500 | 0.0 |
| Treasury EE.UU. 3 meses (UST3M) | 98.72 | 5.515 | 0.0 |
| Treasury EE.UU. 6 meses (UST6M) | 97.37 | 5.586 | 0.0 |
| Treasury EE.UU. 1 año (UST1Y) | 94.87 | 5.438 | 0.0 |
| Treasury EE.UU. 2 años (UST2Y) | 99.85 | 5.081 | 0.0 |
| Treasury EE.UU. 3 años (UST3Y) | 99.30 | 4.881 | 0.0 |
| Treasury EE.UU. 5 años (UST5Y) | 99.45 | 4.751 | 0.0 |
| Treasury EE.UU. 7 años (UST7Y) | 98.97 | 4.801 | 0.0 |
| Treasury EE.UU. 10 años (UST10Y) | 92.84 | 4.795 | 0.0 |
| Treasury EE.UU. 20 años (UST20Y) | 90.31 | 5.160 | 0.0 |
| Treasury EE.UU. 30 años (UST30Y) | 87.06 | 4.960 | 0.0 |
| Bono a 10 años Alemania | 97.82 | 2.856 | -3.5 |
| Bono a 10 años Francia | 96.36 | 3.450 | -3.2 |
| Bono a 10 años Italia | 95.91 | 4.928 | 0.6 |
| Bono a 10 años España | 96.32 | 4.002 | -0.8 |
| Bono a 10 años Reino Unido | 90.17 | 4.557 | -1.9 |

| RENDA FIJA | Cupón % | Maturity | T.I.R. % | Var. bps. |
|--------------------|---------|------------|----------|-----------|
| Australia (en AUD) | 3.000 | 21/11/2033 | 4.511 | -1.6 |
| Eurozona (en EUR) | 2.600 | 15/08/2033 | 2.856 | -3.5 |
| Grecia (en EUR) | 4.250 | 15/06/2033 | 4.388 | -4.4 |
| Japón (en JPY) | 0.800 | 20/09/2033 | 0.800 | 0.0 |
| Portugal (en EUR) | 1.650 | 16/07/2032 | 3.622 | -1.6 |
| Suiza (en CHF) | 3.500 | 08/04/2033 | 1.156 | -3.5 |
| Brasil (en BRL) | 10.000 | 01/01/2033 | 12.06 | -17.0 |
| Argentina (en ARS) | 5.830 | 31/12/2033 | 11.05 | -40.6 |
| Chile (en CLP) | 6.000 | 01/01/2032 | 6.47 | 3.0 |
| Uruguay (en UYU) | 2.500 | 24/08/2034 | 3.40 | 13.2 |
| China (en CNY) | 3.000 | 01/01/2034 | 3.05 | -1.0 |
| Colombia (en COP) | 7.000 | 30/06/2032 | 12.10 | 0.0 |
| India (en INR) | 7.180 | 14/08/2033 | 7.39 | 4.8 |
| Indonesia (en IDR) | 7.000 | 15/02/2033 | 7.00 | -0.4 |
| Malasia (en MYR) | 3.844 | 15/04/2033 | 4.12 | -2.2 |
| México (en USD) | 7.750 | 29/05/2031 | 9.91 | 1.6 |
| Polonia (en PLN) | 6.000 | 25/10/2033 | 6.01 | 0.9 |
| Rusia (en RUB) | 7.700 | 23/03/2033 | 12.31 | 4.0 |

| ETFs GLOBALES (en USD) | Ticker | Moneda | Último* | D.Yield (%) | % YTD | % 1Y | % MTD | % WTD | % 1D |
|---|--------|--------|---------|-------------|-------|------|-------|-------|------|
| SOBERANOS y CON GARANTÍA ESTATAL | | | | | | | | | |
| iShares Trust United States Treasury | TIP | USD | 102.12 | 2.65 | -4.1 | -3.2 | -1.5 | -1.5 | -0.4 |
| iShares Barclays 7-10 Year Treas. Bond | IEF | USD | 90.07 | 2.91 | -6.0 | -5.9 | -1.7 | -1.7 | -0.6 |
| iShares Core US Aggregate Bond ETF | AGG | USD | 92.75 | 3.17 | -4.4 | -3.7 | -1.4 | -1.4 | -0.4 |
| Vanguard Total Bond Market Index Fund | BND | USD | 68.78 | 3.13 | -4.3 | -3.5 | -1.4 | -1.4 | -0.4 |
| iShares Agency Bond ETF | AGZ | USD | 105.17 | 2.97 | -1.2 | -1.1 | -0.6 | -0.6 | -0.2 |
| Invesco Senior Loan ETF | BKLN | USD | 20.91 | 8.50 | 1.9 | 1.1 | -0.4 | -0.4 | 0.1 |
| <i>*Cierre del día anterior</i> | | | | | | | | | |
| CORPORATIVOS | | | | | | | | | |
| iShares iBoxx \$ IG Corporate Bond ETF | LQD | USD | 99.98 | 4.25 | -5.2 | -3.4 | -2.0 | -2.0 | -0.3 |
| iShares Short-Term Corporate Bond ETF | IGSB | USD | 49.59 | 3.08 | -0.5 | 0.5 | -0.5 | -0.5 | -0.1 |
| Spdr Barclays Capital Int. Corp. Bond ETF | IBND | USD | 27.10 | 1.86 | -2.2 | 8.4 | -0.1 | -0.1 | -0.1 |
| iShares iBoxx \$ HY Corporate Bond Fund | HYG | USD | 72.69 | 5.96 | -1.3 | -0.4 | -1.4 | -1.4 | 0.1 |
| iShares Broad USD HY Corp. Bond ETF | USHY | USD | 34.19 | 6.91 | -1.0 | -0.2 | -1.5 | -1.5 | 0.1 |
| SPDR Bloomberg Barclays HY Bond ETF | JNK | USD | 89.04 | 6.81 | -1.1 | -0.6 | -1.5 | -1.5 | 0.2 |
| SPDR Barclays Short Term HY Bond ETF | SJNK | USD | 24.13 | 7.27 | -0.5 | 0.1 | -1.3 | -1.3 | 0.0 |
| iShares Preferred and Income Sec. ETF | PFF | USD | 28.88 | 7.29 | -5.4 | -8.6 | -4.2 | -4.2 | -0.3 |
| iShares Mortgage Real Estate ETF | REM | USD | 21.06 | 10.91 | -7.2 | -0.4 | -5.7 | -5.7 | -0.3 |
| Vanguard Real Estate Index Fund | VNQ | USD | 74.32 | 4.83 | -9.9 | -6.3 | -1.8 | -1.8 | 0.3 |
| ETFs EMERGENTES (en USD) | | | | | | | | | |
| SOBERANOS | | | | | | | | | |
| iShares JP MORGAN USD EM Bond | EMB | USD | 80.74 | 5.23 | -4.6 | 0.6 | -2.2 | -2.2 | 0.0 |
| iShares EM Local Currency Bond ETF | LEMB | USD | 34.25 | 3.00 | -1.3 | 4.7 | -1.7 | -1.7 | -0.0 |
| CORPORATIVOS | | | | | | | | | |
| iShares EM Corporate Bond ETF | CEMB | USD | 41.70 | 4.90 | -2.5 | 1.0 | -1.4 | -1.4 | -0.2 |
| WisdomTree EM Corporate Bond Fund | EMCB | USD | 60.89 | 4.59 | -1.6 | 2.6 | -1.1 | -1.1 | -0.2 |
| <i>*Cierre del día anterior</i> | | | | | | | | | |



MONEDAS, TASAS Y COMMODITIES

Precios y Variaciones

| MERCADO CAMBIARIO | Último* | % YTD | % MTD | % 6M | % 3M | % 1D |
|-----------------------------|-----------|-------|-------|-------|-------|------|
| Euro (EUR/USD) | 1.0525 | -1.7 | -0.4 | -3.5 | -4.3 | -0.6 |
| Yen Japonés (USD/JPY) | 149.1200 | -12.1 | 0.2 | -10.4 | -5.2 | 0.1 |
| Franco Suizo (USD/CHF) | 0.9102 | 1.6 | 0.6 | -0.8 | -2.7 | 0.0 |
| Libra Esterlina (GBP/USD) | 1.2168 | 0.6 | -0.2 | -2.1 | -5.4 | -0.6 |
| Dólar Australiano (AUD/USD) | 0.6357 | -6.7 | -1.2 | -4.4 | -4.8 | -0.4 |
| Dólar Canadiense (USD/CAD) | 1.3663 | -0.8 | -0.7 | -1.1 | -2.8 | -0.0 |
| Corona Sueca (USD/SEK) | 11.0145 | -5.2 | -0.9 | -5.2 | -2.3 | -0.3 |
| Corona Noruega (USD/NOK) | 10.9043 | -10.2 | -2.0 | -3.1 | -3.8 | 0.2 |
| Dólar Neozelandés (NZD/USD) | 0.5975 | -5.9 | -0.3 | -3.5 | -3.8 | -0.2 |
| Peso Argentino (USDARS) | 349.7100 | -49.5 | -0.0 | -39.1 | -25.6 | -0.0 |
| Real Brasileño (USDBRL) | 5.1457 | 2.7 | -2.2 | -1.7 | -4.4 | 0.4 |
| Peso Mexicano (USDMXN) | 18.2608 | 6.8 | -4.6 | -0.5 | -6.6 | -0.5 |
| Renminbi Chino (USDCNY) | 7.2899 | -5.4 | 0.1 | -5.6 | -0.8 | 0.1 |
| Rupia India (USDINR) | 83.2554 | -0.6 | -0.3 | -1.5 | -0.9 | -0.2 |
| Rublo Ruso (USDRUB) | 101.1600 | -25.9 | -2.2 | -19.3 | -9.0 | -0.2 |
| Peso Chileno (USDCLP) | 923.0500 | -8.2 | -3.6 | -11.3 | -11.9 | 0.0 |
| Peso Colombiano (USDCOP) | 4,314.000 | 12.3 | -5.6 | 5.6 | -2.0 | 0.2 |
| Nuevo Sol Peruano (USDPEN) | 3.8105 | -0.9 | -1.3 | -1.1 | -4.6 | -0.3 |
| Dólar Hong Kong (USDHKD) | 7.8304 | -0.3 | 0.0 | 0.2 | -0.0 | 0.0 |

*Cotización al

09/10/2023 7:51:18

| TASAS DE REFERENCIA | Último |
|---------------------|---------|
| EE.UU. | 5.50% |
| Australia | 4.10% |
| Eurozona | 4.00% |
| Canadá | 5.25% |
| Reino Unido | 5.25% |
| Japón | -0.10% |
| Nueva Zelanda | 5.50% |
| Suiza | 1.75% |
| Suecia | 4.00% |
| Brasil | 12.75% |
| Argentina | 118.00% |
| Chile | 9.50% |
| China | 4.35% |
| Colombia | 13.25% |
| Egipto | 20.25% |
| Malasia | 3.00% |
| México | 11.25% |
| Perú | 7.25% |
| Sudáfrica | 8.25% |

*Cotización al

09/10/2023 7:51:18

| COMMODITIES | Último* | % YTD | % MTD | % 5D | % 1D |
|-----------------------------|----------|-------|-------|------|------|
| ENERGÍA | | | | | |
| Petróleo WTI (USD/bbl) | 85.99 | 7.1 | -5.3 | -3.2 | 3.9 |
| Petróleo Brent (USD/bbl) | 87.69 | 2.1 | -8.0 | -3.3 | 3.7 |
| Gas Natural (USD/mmbtu) | 3.39 | -24.2 | 15.7 | 19.4 | 1.6 |
| Gasolina (USD/gal) | 2.25 | -8.4 | -7.6 | -6.6 | 2.8 |
| METALES PRECIOSOS | | | | | |
| Oro (USD/oz) | 1,850.20 | 1.7 | 0.1 | 1.1 | 1.1 |
| Plata (USD/oz) | 21.54 | -9.7 | -3.1 | 1.5 | 0.0 |
| Platino (USD/oz) | 871.70 | -18.8 | -3.9 | -0.6 | 0.0 |
| Paladio (USD/oz) | 1,164.20 | -34.9 | -7.2 | -3.4 | 0.0 |
| METALES INDUSTRIALES | | | | | |
| Cobre (USD/lbs) | 3.62 | -4.8 | -2.7 | -0.2 | 0.0 |
| Aluminio (USD/tn) | 2,227.25 | -7.6 | -4.4 | -3.6 | 0.0 |
| Acero (USD/tn) | 700.00 | -5.9 | -0.6 | 0.7 | -0.7 |
| AGRÍCOLAS | | | | | |
| Maíz (USD/tn) | 195.28 | -26.9 | 4.0 | 1.5 | 0.8 |
| Azúcar (USD/lbs) | 27.02 | 34.8 | 2.9 | 2.5 | 1.1 |
| Café (USD/lbs) | 147.65 | -11.7 | 1.0 | -1.0 | 1.1 |
| Cacao (USD/tn) | 3,448.00 | 32.6 | 0.9 | -1.5 | -0.1 |
| Soja (USD/tn) | 468.44 | -16.1 | 0.0 | -0.2 | 0.7 |
| Trigo (USD/tn) | 212.45 | -27.0 | 6.8 | 2.4 | 1.8 |
| Arroz (USD/cwt) | 15.92 | -11.8 | 0.1 | 0.3 | -0.8 |
| Algodón (USD/lbs) | 86.85 | 4.2 | -0.0 | -0.7 | 0.0 |
| Canola (USD/tn) | 711.40 | -17.1 | 0.6 | #N/A | 0.0 |

*Cotización al

09/10/2023 7:51:18



MONEDAS, TASAS Y COMMODITIES

Precios y Variaciones

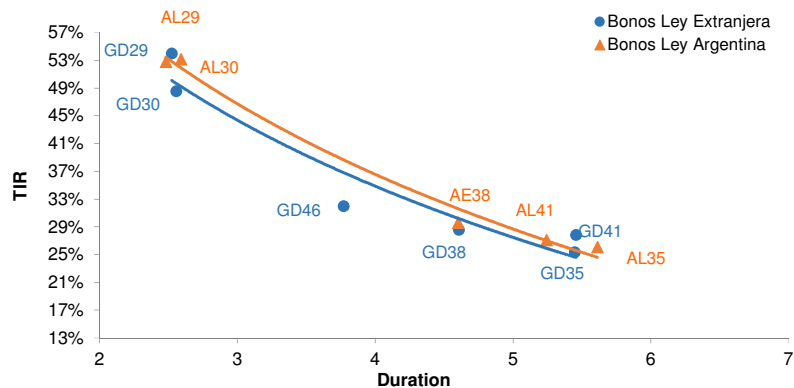
| CRIPATOMONEDAS | Último | % YTD | % MTD | % 6M | % 3M | % 1D |
|----------------|-----------|-------|-------|-------|-------|------|
| Bitcoin | 27,544.65 | 66.2 | 2.4 | -5.5 | -10.5 | -1.6 |
| Ethereum | 1,597.50 | 33.3 | -4.2 | -15.3 | -15.6 | -3.0 |
| Ripple | 0.50 | 45.0 | -3.6 | -2.5 | 4.3 | -5.3 |
| Bitcoin Cash | 216.35 | 123.9 | -8.4 | 71.1 | -23.0 | -7.0 |
| Litecoin | 63.39 | -6.5 | -4.2 | -31.6 | -34.7 | -3.4 |



BONOS SOBERANOS REESTRUCTURACIÓN 2020

Precios en USD, EUR y ARS - Datos Técnicos y Curva

| Especie | Ticker | Fecha Vencimiento | Cupón (%) | Monto Circulación (en M de USD) | Frecuencia cupón | Precio al 09-oct-2023 | TIR (%) | Duration | Rating | Mínimo (V/N) | ISIN |
|---|--------|-------------------|-----------|---------------------------------|------------------|-----------------------|---------|----------|--------|--------------|--------------|
| BONOS EN DÓLARES - Precios en USD (OTC en el exterior) | | | | | | | | | | | |
| Bono Step Up 2029 - Ley NY | GD29 | 09/jul/2029 | 1.000 | 2,635.0 | Semestral | 25.00 | 53.94 | 2.52 | CCC | 1 | US040114HX11 |
| Bono Step Up 2029 - Ley Arg | AL29 | 09/jul/2029 | 1.000 | 2,196.2 | Semestral | 25.62 | 53.15 | 2.59 | CCC | 1 | ARARGE3209Y4 |
| Bono Step Up 2030 - Ley NY | GD30 | 09/jul/2030 | 0.750 | 16,090.6 | Semestral | 26.25 | 48.51 | 2.56 | CCC | 1 | US040114HS26 |
| Bono Step Up 2030 - Ley Arg | AL30 | 09/jul/2030 | 0.750 | 13,581.3 | Semestral | 24.25 | 52.78 | 2.48 | CCC | 1 | ARARGE3209S6 |
| Bono Step Up 2035 - Ley NY | GD35 | 09/jul/2035 | 3.625 | 20,501.7 | Semestral | 23.00 | 27.82 | 5.46 | CCC | 1 | US040114HT09 |
| Bono Step Up 2035 - Ley Arg | AL35 | 09/jul/2035 | 3.625 | 19,076.8 | Semestral | 26.01 | 26.09 | 5.61 | CCC | 1 | ARARGE3209T4 |
| Bono Step Up 2038 - Ley NY | GD38 | 09/ene/2038 | 4.250 | 11,405.1 | Semestral | 27.50 | 28.52 | 4.61 | CCC | 1 | US040114HU71 |
| Bono Step Up 2038 - Ley Arg | AE38 | 09/ene/2038 | 4.250 | 7,231.4 | Semestral | 27.40 | 29.57 | 4.60 | CCC | 1 | ARARGE3209U2 |
| Bono Step Up 2041 - Ley NY | GD41 | 09/jul/2041 | 3.500 | 10,482.1 | Semestral | 24.25 | 25.29 | 5.45 | CCC | 1 | US040114HV54 |
| Bono Step Up 2041 - Ley Arg | AL41 | 09/jul/2041 | 3.500 | 1,542.2 | Semestral | 23.13 | 27.07 | 5.24 | CCC | 1 | ARARGE3209V0 |
| Bono Step Up 2046 - Ley NY | GD46 | 09/jul/2046 | 3.625 | 2,092.0 | Semestral | 23.00 | 31.95 | 3.77 | CCC | 1 | US040114HW38 |
| BONOS EN EUROS - Precios en EUR (OTC en el exterior) | | | | | | | | | | | |
| Bono Step Up 2029 - Ley Ext | GE29 | 09/jul/2029 | 0.500 | 90.4 | Semestral | 22.03 | 67.58 | 2.51 | CCC | 1 | XS2200244072 |
| Bono Step Up 2030 - Ley Ext | GE30 | 09/jul/2030 | 0.125 | 1,165.6 | Semestral | 23.56 | 58.51 | 2.55 | CCC | 1 | XS2177363665 |
| Bono Step Up 2035 - Ley Ext | GE35 | 09/jul/2035 | 2.500 | 298.8 | Semestral | 20.95 | 29.75 | 5.70 | CCC | 1 | XS2177364390 |
| Bono Step Up 2038 - Ley Ext | GE38 | 09/ene/2038 | 3.750 | 809.3 | Semestral | 22.70 | 33.63 | 4.56 | CCC | 1 | XS2177365017 |
| Bono Step Up 2041 - Ley Ext | GE41 | 09/jul/2041 | 3.000 | 1,572.6 | Semestral | 20.03 | 29.61 | 5.40 | CCC | 1 | XS2177365363 |
| Bono Step Up 2046 - Ley Ext | GE46 | 09/jul/2046 | 2.500 | 248.1 | Semestral | 20.19 | 36.75 | 3.76 | CCC | 1 | XS2177365520 |
| BONOS EN DÓLARES - Precios en ARS (BYMA) | | | | | | | | | | | |
| Bono Step Up 2029 - Ley NY | GD29 | 09/jul/2029 | 1.000 | 2,635.0 | Semestral | 24,180.00 | 53.37 | 2.05 | CCC | 1 | US040114HX11 |
| Bono Step Up 2029 - Ley Arg | AL29 | 09/jul/2029 | 1.000 | 2,196.2 | Semestral | 21,900.00 | 59.40 | 1.96 | CCC | 1 | ARARGE3209Y4 |
| Bono Step Up 2030 - Ley NY | GD30 | 09/jul/2030 | 0.750 | 16,090.6 | Semestral | 24,220.00 | 49.51 | 2.10 | CCC | 1 | US040114HS26 |
| Bono Step Up 2030 - Ley Arg | AL30 | 09/jul/2030 | 0.750 | 13,581.3 | Semestral | 21,440.00 | 56.79 | 1.95 | CCC | 1 | ARARGE3209S6 |
| Bono Step Up 2035 - Ley NY | GD35 | 09/jul/2035 | 3.625 | 20,501.7 | Semestral | 22,050.00 | 27.69 | 4.93 | CCC | 1 | US040114HT09 |
| Bono Step Up 2035 - Ley Arg | AL35 | 09/jul/2035 | 3.625 | 19,076.8 | Semestral | 20,980.00 | 28.84 | 4.81 | CCC | 1 | ARARGE3209T4 |
| Bono Step Up 2038 - Ley NY | GD38 | 09/ene/2038 | 4.250 | 11,405.1 | Semestral | 26,800.00 | 27.65 | 4.22 | CCC | 1 | US040114HU71 |
| Bono Step Up 2038 - Ley Arg | AE38 | 09/ene/2038 | 4.250 | 7,231.4 | Semestral | 22,700.00 | 32.32 | 3.83 | CCC | 1 | ARARGE3209U2 |
| Bono Step Up 2041 - Ley NY | GD41 | 09/jul/2041 | 3.500 | 10,482.1 | Semestral | 22,900.00 | 25.14 | 4.98 | CCC | 1 | US040114HV54 |
| Bono Step Up 2041 - Ley Arg | AL41 | 09/jul/2041 | 3.500 | 1,542.2 | Semestral | 21,250.00 | 26.85 | 4.77 | CCC | 1 | ARARGE3209V0 |
| Bono Step Up 2046 - Ley Arg | GD46 | 09/jul/2046 | 3.625 | 2,092.0 | Semestral | 22,200.00 | 31.19 | 3.42 | CCC | 1 | US040114HW38 |

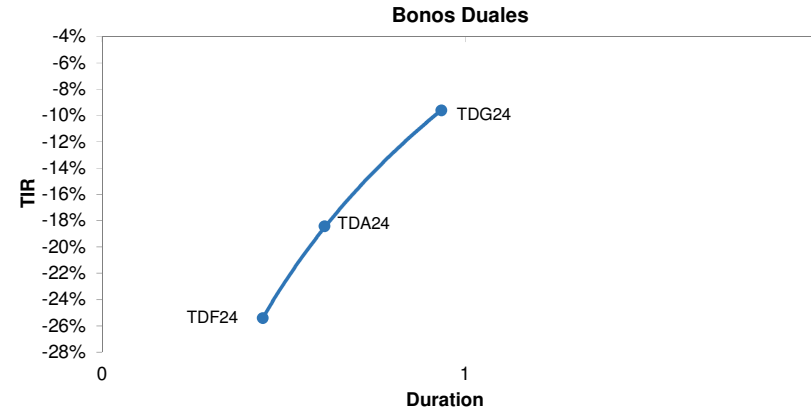




BONOS SOBERANOS EN MONEDA EXTRANJERA

Precios en USD, EUR y ARS - Datos Técnicos

| Especie | Ticker | Fecha Vencimiento | Cupón (%) | Monto Circulación (en M de USD) | Frecuencia cupón | Precio al 09-oct-2023 | TIR (%) | Duration | Rating | Mínimo (V/N) | ISIN |
|---|--------|-------------------|-----------|---------------------------------|------------------|-----------------------|---------|----------|--------|--------------|--------------|
| BONOS EN DÓLARES - Precios en USD (OTC en el exterior) | | | | | | | | | | | |
| Cupón Ligado al PIB en USD Ley Arg Canje 2005 | TVPA | 15/dic/2035 | - | 3,103.4 | Semestral | 2.63 | - | - | CCC | 1 | ARARGE03E154 |
| Cupón Ligado al PIB en USD Ley NY Canje 2005 | TVPY | 15/dic/2035 | - | 14,386.5 | Semestral | 2.63 | - | - | CCC | 1 | US040114GM64 |
| Cupón Ligado al PIB en USD Ley NY Canje 2010 | TVY0 | 15/dic/2035 | - | 2,727.0 | Semestral | 2.01 | - | - | CCC | 1 | XS0501197262 |
| BONOS EN DÓLARES - Precios en ARS (BYMA) | | | | | | | | | | | |
| Cupón Ligado al PIB en USD Ley Arg Canje 2005 | TVPA | 15/dic/2035 | - | 3,103.4 | Semestral | 888.00 | - | - | CCC | 1 | ARARGE03E154 |
| Cupón Ligado al PIB en USD Ley NY Canje 2005 | TVPY | 15/dic/2035 | - | 14,386.5 | Semestral | 2,258.50 | - | - | CCC | 1 | US040114GM64 |
| Cupón Ligado al PIB en USD Ley NY Canje 2010 | TVY0 | 15/dic/2035 | - | 2,727.0 | Semestral | 2,200.00 | - | - | CCC | 1 | XS0501197262 |
| BONOS EN EUROS - Precios en EUR (OTC en el exterior) | | | | | | | | | | | |
| Cupón Ligado al PIB en EUR Ley ING Canje 2005 | TVPE | 15/dic/2035 | - | 11,807.9 | Semestral | 3.62 | - | - | CCC | 1 | XS0209139244 |
| BONOS EN EUROS - Precios en ARS (BYMA) | | | | | | | | | | | |
| Cupón Ligado al PIB en EUR Ley ING Canje 2005 | TVPE | 15/dic/2035 | - | 11,807.9 | Semestral | 3,700.00 | - | - | CCC | 1 | XS0209139244 |
| BONOS DOLLAR LINKED - Precios en ARS (BYMA) | | | | | | | | | | | |
| Bono del Tesoro Dollar Linked 0.4% 2024 | TV24 | 30/abr/2024 | 0.4 | 3,307.9 | Semestral | 38,450.00 | -14.96 | 0.60 | CCC | 1 | ARARGE320C18 |
| BONOS DUALES - Precios en ARS (BYMA) | | | | | | | | | | | |
| Bono Dual 3.0% 2024 | TDF24 | 28/feb/2024 | 3.0 | 7,388.2 | Anual | 39,200.00 | -25.41 | 0.44 | CCC | 1 | - |
| Bono Dual 3.25% 2024 | TDA24 | 30/abr/2024 | 3.25 | 3,639.1 | Anual | 39,200.00 | -18.42 | 0.61 | R-5 | 2 | ARARGE320DO5 |
| Bono Dual 3.25% 2024 | TDG24 | 30/ago/2024 | 3.25 | 6,522.1 | Anual | 38,300.00 | -9.62 | 0.94 | CCC | 3 | ARARGE320DW8 |



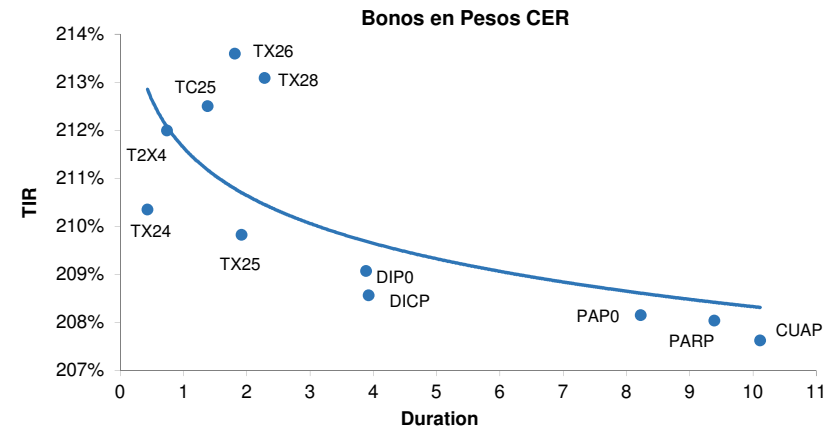
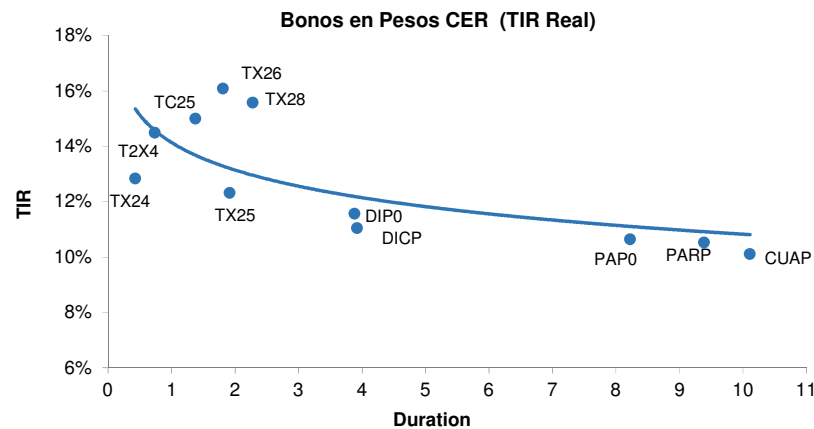


BONOS SOBERANOS EN PESOS

Precios en ARS (BYMA) - Datos Técnicos y Curvas

| Especie | Ticker | Fecha Vencimiento | Cupón (%) | Monto Circulación (en M de ARS) | Frecuencia cupón | Precio al 09-oct-2023 | Spread (%) | TIR (%) | Duration | Rating | Mínimo (V/N) | ISIN |
|------------------------|--------|-------------------|-----------|---------------------------------|------------------|-----------------------|------------|---------|----------|--------|--------------|--------------|
| BONOS EN PESOS | | | | | | | | | | | | |
| Cons 6° S 2% | PR13 | 15/mar/2024 | 2.000 | 104.0 | Mensual | 580.00 | 12.44 | 209.94 | 0.23 | NR | 1 | ARARGE03B291 |
| Bonte 2024 CER + 1.5% | TX24 | 25/may/2024 | 1.500 | 345,783.0 | Semestral | 625.50 | 12.84 | 210.34 | 0.43 | CCC | 1 | ARARGE3208U4 |
| Bonte 2024 CER + 1.55% | T2X4 | 26/jul/2024 | 1.550 | 368,673.2 | Semestral | 451.00 | 14.49 | 211.99 | 0.74 | CCC | 1 | ARARGE320AI3 |
| Boncer 2025 | TC25 | 27/abr/2025 | 4.000 | 29,097.8 | Semestral | 1,280.00 | 15.00 | 212.50 | 1.38 | CCC | 1 | ARARGE4505U2 |
| Bonte 2025 CER +1.8% | TX25 | 09/nov/2025 | 1.800 | 48,154.1 | Semestral | 236.00 | 12.32 | 209.82 | 1.92 | CCC | 2 | ARARGE320C83 |
| Bonte 2026 CER +2% | TX26 | 09/nov/2026 | 2.000 | 327,493.0 | Semestral | 457.00 | 16.09 | 213.59 | 1.81 | CCC | 1 | ARARGE3209W8 |
| Bonte 2028 CER+ 2.25% | TX28 | 09/nov/2028 | 2.250 | 75,904.8 | Semestral | 431.40 | 15.58 | 213.08 | 2.28 | CCC | 1 | ARARGE3209X6 |
| Discount ARS | DICP | 31/dic/2033 | 5.830 | 10,472.5 | Semestral | 9,549.00 | 11.05 | 208.55 | 3.93 | CCC | 1 | ARARGE03E121 |
| Discount ARS | DIP0 | 31/dic/2033 | 5.830 | 125.5 | Semestral | 9,370.00 | 11.56 | 209.06 | 3.88 | CCC | 1 | ARARGE03G696 |
| UVP ARS | TVPP | 15/dic/2035 | - | 86,214.7 | - | 1.13 | - | - | - | CCC | 1 | ARARGE03E147 |
| Par ARS Ley Arg | PARP | 31/dic/2038 | 1.770 | 2,858.3 | Semestral | 4,500.00 | 10.53 | 208.03 | 9.39 | CCC | 1 | US040114GK09 |
| Par ARS Ley Arg | PAP0 | 31/dic/2038 | 1.770 | 11.2 | Semestral | 4,350.00 | 10.64 | 208.14 | 8.22 | CCC | 1 | ARARGE03G712 |
| Cuasipar ARS | CUAP | 31/dic/2045 | 3.310 | 23,434.1 | Semestral | 5,960.00 | 10.11 | 207.61 | 10.11 | CCC | 1 | ARARGE03E139 |

Expectativas de inflación (próx 12m): 197.50%



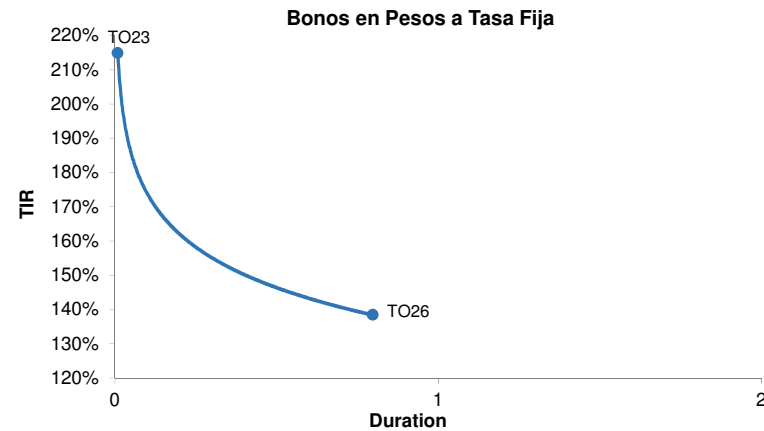
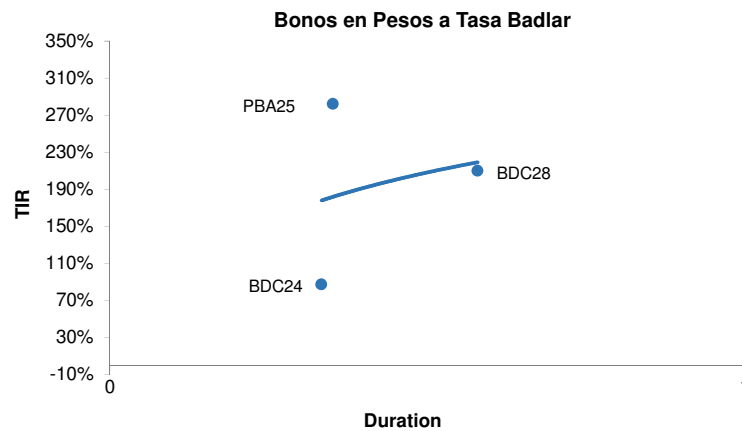


BONOS SOBERANOS Y PROVINCIALES EN PESOS

Precios en ARS (BYMA) - Datos Técnicos y Curvas

| Especie | Ticker | Fecha Vencimiento | Cupón (%) | Monto Circulación (en M de ARS) | Frecuencia cupón | Precio al 09-oct-2023 | Spread (%) | TIR (%) | Duration | Rating | Mínimo (V/N) | ISIN |
|------------------------------------|--------|-------------------|-----------|---------------------------------|------------------|-----------------------|------------|---------|----------|---------|--------------|--------------|
| BONOS EN PESOS: Tasa Badlar | | | | | | | | | | | | |
| CABA Mar. 2024 | BDC24 | 29/mar/2024 | 91.438 | 26,003.2 | Trimestral | 100.00 | | 87.00 | 0.33 | WR | 1 | ARCBAS3201F3 |
| PBA 2025 B+375 | PBA25 | 12/abr/2025 | 91.938 | 30,000.0 | Trimestral | 102.50 | | 282.18 | 0.35 | 0.00 | 1 | ARPBUE3205N8 |
| CABA Feb. 2028 | BDC28 | 22/feb/2028 | 91.938 | 30,809.9 | Trimestral | 104.00 | | 209.63 | 0.58 | AA(arg) | 1 | ARCBAS3201J5 |
| BONOS EN PESOS: Tasa Fija | | | | | | | | | | | | |
| Bonte 16% 2023 | TO23 | 17/oct/2023 | 16.000 | 64,150.4 | Trimestral | 105.65 | | 214.91 | 0.01 | CCC | 1 | ARARGE4502J2 |
| Bonte 15,5% 2026 | TO26 | 17/oct/2026 | 15.500 | 96,569.7 | Trimestral | 27.80 | | 138.40 | 0.80 | CCC | 1 | ARARGE4502K0 |

BADLAR -Privados- (próx 12m): 124.470%

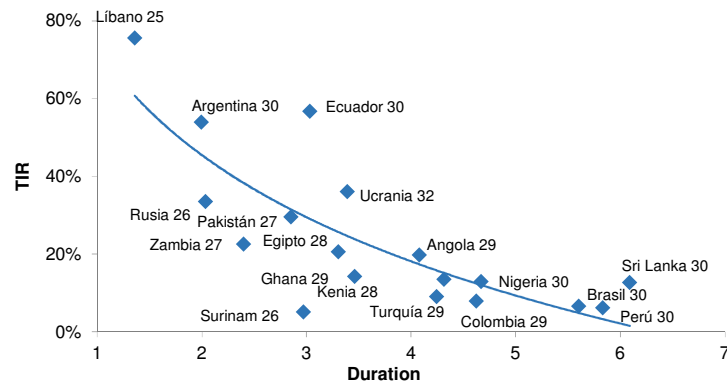




BONOS SOBERANOS EMERGENTES

Comparables a 10 años- Precios en USD - Datos Técnicos y Curva

| Especie | Ticker (Refinitiv) | Fecha Vencimiento | Cupón (%) | Monto Circulación (en M de USD) | Frecuencia cupón | Precio al 09-oct-2023 | TIR (%) | Duration | Rating | Mínimo (V/N) | ISIN |
|---|--------------------|-------------------|-----------|---------------------------------|------------------|-----------------------|---------|----------|--------|--------------|--------------|
| BONOS EN DÓLARES - Precios en USD (OTC en el exterior) | | | | | | | | | | | |
| Perú 2030 | PERU | 20/jun/2030 | 2.844 | 694.2 | Semestral | 82.30 | 6.10 | 5.83 | A | 1,000 | US715638DA79 |
| Colombia 2029 | COLOMB | 15/mar/2029 | 4.500 | 2,000.0 | Semestral | 85.38 | 7.86 | 4.62 | BB+ | 200,000 | US195325DP79 |
| Brasil 2030 | BRAZIL | 12/jun/2030 | 3.875 | 3,500.0 | Semestral | 85.59 | 6.58 | 5.60 | BB | 200,000 | US105756CC23 |
| Ecuador 2030 | ECUAD | 15/ago/2030 | 10.000 | 193.5 | Semestral | 9.50 | 56.71 | 3.03 | CCC+ | 1,000 | XS0115743519 |
| Argentina 2030 | ARGENT | 09/jul/2029 | 1.000 | 2,635.0 | Semestral | 25.00 | 53.94 | 2.00 | CCC | 1 | US040114HX11 |
| Kenia 2028 | KENYA | 28/feb/2028 | 7.250 | 1,000.0 | Semestral | 77.75 | 14.24 | 3.46 | B3 | 200,000 | US491798AG90 |
| Egipto 2028 | EGYPT | 21/feb/2028 | 6.588 | 1,250.0 | Semestral | 60.98 | 20.55 | 3.31 | Caa1 | 200,000 | US03846JW487 |
| Turquía 2029 | TURKEY | 26/abr/2029 | 7.625 | 3,000.0 | Semestral | 94.09 | 9.00 | 4.24 | B | 200,000 | US900123CT57 |
| Nigeria 2030 | NGERIA | 23/feb/2030 | 7.143 | 1,250.0 | Semestral | 75.64 | 12.86 | 4.67 | Caa1 | 200,000 | US65412JAD54 |
| Pakistán 2027 | PAKIST | 05/dic/2027 | 6.875 | 1,500.0 | Semestral | 47.70 | 29.52 | 2.85 | CCC | 200,000 | US740840AC76 |
| Ucrania 2032 | UKRAIN | 25/sep/2034 | 7.375 | 3,000.0 | Semestral | 23.50 | 36.06 | 3.39 | Ca | 200,000 | XS1577952952 |
| Ghana 2029 | GHANA | 16/may/2029 | 7.625 | 1,000.0 | Semestral | 42.63 | 19.72 | 4.08 | Caa3 | 200,000 | US374422AG84 |
| Angola 2029 | ANGOLA | 26/nov/2029 | 8.000 | 1,750.0 | Semestral | 77.75 | 13.44 | 4.32 | B | 200,000 | US035198AD29 |
| Sri Lanka 2030 | SRILAN | 28/mar/2030 | 7.550 | 1,500.0 | Semestral | 45.25 | 12.65 | 6.09 | CCC- | 200,000 | USY8137FAR92 |
| Zambia | ZAMBIA | 30/jul/2027 | 8.970 | 1,250.0 | Semestral | 55.80 | 22.53 | 2.40 | Caa3 | 200,000 | US988895AF56 |
| Libano | BLIBA | 20/dic/2025 | 6.550 | 105.0 | Semestral | 32.69 | 75.55 | 1.36 | NULL | 100,000 | LBCU16003255 |
| Surinam | SRNM | 26/oct/2026 | 9.250 | 550.0 | Semestral | 86.00 | 5.02 | 2.97 | WD | 200,000 | USP68788AA97 |
| Rusia | RUSSIA | 27/may/2026 | 4.750 | 3,000.0 | Semestral | 54.00 | 33.45 | 2.04 | WR | 200,000 | RU000A0JWHB2 |





BONOS CORPORATIVOS EN DÓLARES

Precios en USD (OTC en el exterior) - Datos Técnicos y Curvas

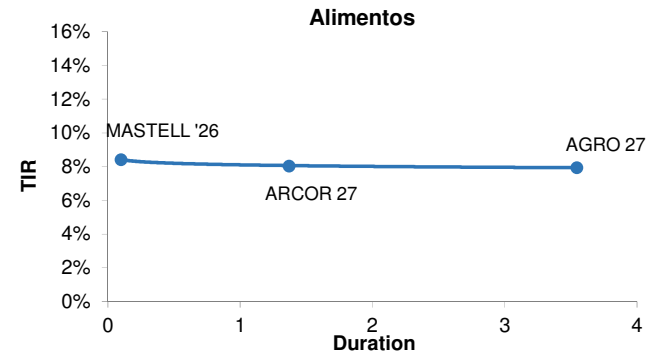
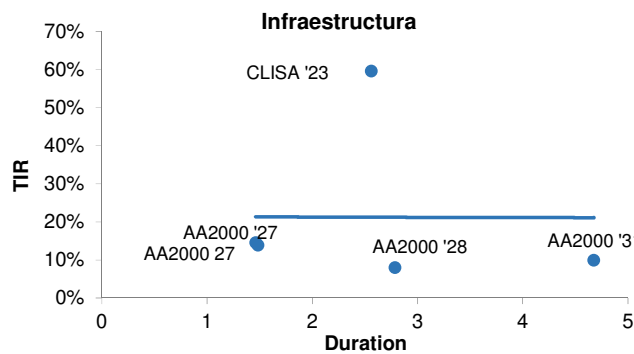
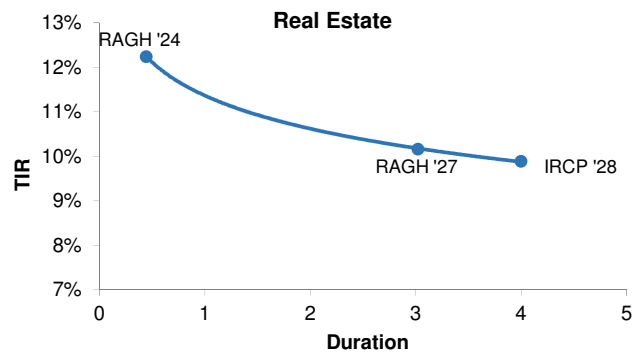
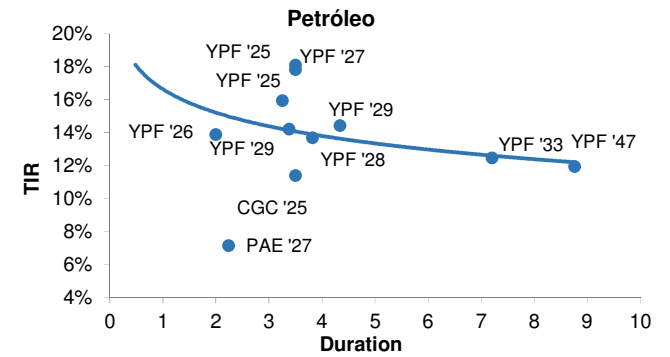
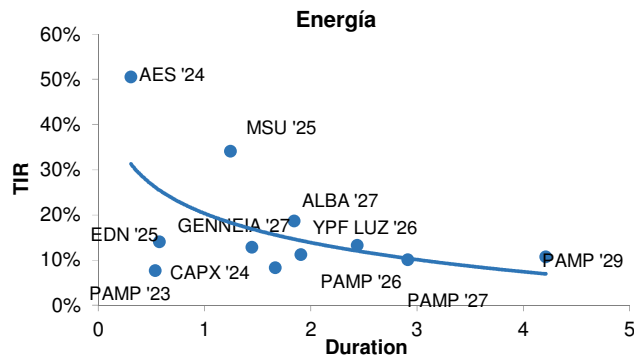
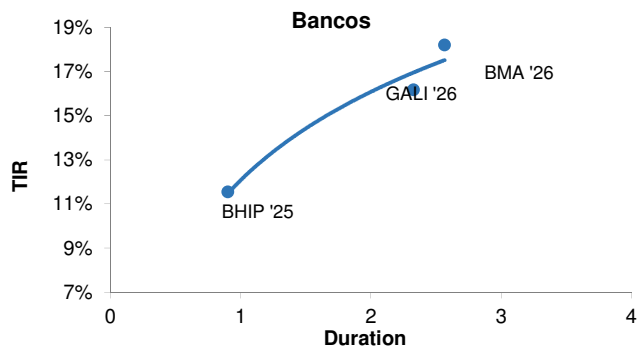
| Especie | Ticker (Refinitiv) | Vencimiento | Cupón (%) | Precio al 09-oct-23 | T.I.R. | Duration | Call (Si o No) | Fecha Call | Precio Call | Rating | Mínimo (V/N) | Código ISIN |
|--|--------------------|-------------|-----------|---------------------|--------|----------|----------------|-------------|-------------|----------|--------------|--------------|
| BANCOS Y FINANCIERAS | | | | | | | | | | | | |
| Banco Hipotecario | BHIP | 14/oct/2025 | 9.750 | 98.38 | 11.56% | 0.90 | Y | - | - | Caa3 | 15,000 | US05961AAH68 |
| Banco de Galicia y Buenos Aires | GGALBN | 19/jul/2026 | 11.266 | 93.25 | 16.18% | 2.33 | Y | - | - | Ca | 200,000 | USP0R66CAA64 |
| Banco Macro | BMA | 04/nov/2026 | 6.643 | 82.25 | 18.21% | 2.57 | Y | - | - | Ca | 150,000 | USP1047VAF42 |
| ENERGÍA | | | | | | | | | | | | |
| PAMPA ENERGIA | BPPAN | 15/nov/2023 | 5.000 | 98.50 | 7.72% | 0.54 | Y | 08/nov/2023 | 100.00 | WD | 150,000 | US69784DAA63 |
| AES ARGENTINA | AESAR | 02/feb/2024 | 7.750 | 88.38 | 50.58% | 0.31 | Y | 08/nov/2023 | 100.00 | RR4 | 150,000 | USP1000CAA29 |
| CAPEX SA | CAPX | 15/may/2024 | 6.875 | 96.00 | 14.09% | 0.58 | Y | 19/oct/2023 | 100.00 | RR3 | 1,000 | USP20058AC08 |
| RIO ENERGY SA | MSUEGM | 01/feb/2025 | 6.875 | 73.00 | 34.13% | 1.25 | Y | 08/nov/2023 | 101.72 | Caa3 | 150,000 | USP8S12UAA35 |
| EDENOR | EDN | 12/may/2025 | 9.750 | 95.63 | 12.87% | 1.45 | N | - | - | Caa3 | 150,000 | US29244AAL61 |
| YPF LUZ | YPFDA | 25/jul/2026 | 10.000 | 92.50 | 13.29% | 2.44 | Y | 08/nov/2023 | 105.00 | Caa3 | 1,000 | USP9897PAB06 |
| PAMPA ENERGIA | PAMPX | 08/dic/2026 | 9.500 | 102.25 | 8.32% | 1.67 | Y | 08/dic/2024 | 104.50 | RR3 | 1 | US697660AD09 |
| PAMPA ENERGIA | PAMPX | 24/ene/2027 | 7.500 | 92.75 | 10.14% | 2.91 | Y | 08/nov/2023 | 102.50 | RR3 | 150,000 | USP7464EAA49 |
| GENNEIA | EMGSD | 02/sep/2027 | 8.750 | 95.50 | 11.24% | 1.91 | Y | 08/nov/2023 | 102.19 | RR3 | 1,000 | US372319AB97 |
| Albanesi | ALBANG | 01/dic/2027 | 9.875 | 85.00 | 18.66% | 1.84 | Y | 01/dic/2023 | 104.81 | RR3 | 1 | US36875KAD37 |
| PAMPA ENERGIA | PAMPX | 15/abr/2029 | 9.125 | 93.38 | 10.75% | 4.21 | Y | 15/abr/2024 | 104.56 | B | 150,000 | USP7464EAB22 |
| GAS (Generación, Transporte y Distribución) | | | | | | | | | | | | |
| TRANSPORT DE GAS | TGSUB | 02/may/2025 | 6.750 | 93.00 | 11.79% | 1.46 | Y | 19/oct/2023 | 101.69 | Caa3 | 150,000 | USP9308RAZ66 |
| PETRÓLEO | | | | | | | | | | | | |
| YPF SOCIEDAD ANO | YPPD | 04/abr/2024 | 8.750 | 95.00 | 20.13% | 0.48 | N | - | - | CCC- | 1,000 | US984245AK63 |
| CIA GENERAL DE COMBUSTIBLES | LTNEXM | 08/mar/2025 | 9.500 | 98.13 | 11.40% | 3.50 | N | - | - | CCC- | 1,000 | US20448QAB68 |
| YPF SOCIEDAD ANO | YPPD | 23/mar/2025 | 8.500 | 92.25 | 17.84% | 3.50 | N | - | - | CCC- | 1,000 | US984245AT72 |
| YPF SOCIEDAD ANO | YPPD | 28/jul/2025 | 8.500 | 85.75 | 18.11% | 3.50 | N | - | - | CCC- | 1,000 | US984245AL47 |
| YPF SOCIEDAD ANO | YPPD | 12/feb/2026 | 9.000 | 95.00 | 13.90% | 2.00 | Y | - | - | Caa3 | 1 | US984245AU46 |
| PAN AMERICAN ENERGY | BPPAN | 30/abr/2027 | 9.125 | 104.50 | 7.14% | 2.24 | N | - | - | AAA(arg) | 1,000 | USE7S78BAB82 |
| YPF SOCIEDAD ANO | YPPD | 21/jul/2027 | 6.950 | 75.13 | 15.96% | 3.25 | N | - | - | CCC- | 10,000 | US984245AQ34 |
| YPF SOCIEDAD ANO | YPPD | 02/nov/2028 | 10.000 | 86.75 | 13.71% | 3.82 | N | - | - | CCC- | 1,000 | US984245AF78 |
| YPF SOCIEDAD ANO | YPPD | 27/jun/2029 | 8.500 | 77.38 | 14.44% | 4.34 | Y | 27/mar/2029 | 100.00 | Caa3 | 10,000 | US984245AS99 |
| YPF SOCIEDAD ANO | YPPD | 30/jun/2029 | 9.000 | 84.00 | 14.22% | 3.38 | Y | 30/dic/2028 | 100.00 | Caa3 | 1 | US984245AV29 |
| YPF SOCIEDAD ANO | YPPD | 30/sep/2033 | 7.000 | 72.00 | 12.47% | 7.21 | Y | 30/mar/2033 | 100.00 | Caa3 | 1 | US984245AW02 |
| YPF SOCIEDAD ANO | YPPD | 15/dic/2047 | 7.000 | 61.00 | 11.96% | 8.77 | Y | 15/jun/2047 | 100.00 | CCC- | 10,000 | US984245AR17 |
| REAL ESTATE | | | | | | | | | | | | |
| RAGHSA SA | RAGHS | 21/mar/2024 | 7.250 | 97.88 | 12.24% | 0.44 | Y | 08/nov/2023 | 100.00 | Caa2 | 1,000 | USP79849AC24 |
| RAGHSA SA | RAGHS | 04/may/2027 | 8.500 | 95.13 | 10.16% | 3.02 | Y | 04/may/2024 | 104.25 | Caa2 | 1,000 | USP79849AD07 |
| IRSA | IRSA | 22/jun/2028 | 8.750 | 97.00 | 9.89% | 4.00 | N | - | - | B | 1 | USP58809BH95 |
| INFRAESTRUCTURA | | | | | | | | | | | | |
| AEROPUERTOS ARG | AERNT | 01/feb/2027 | 9.375 | 93.00 | 14.57% | 1.46 | Y | 13/nov/2023 | 102.58 | Caa3 | 150,000 | US00786PAD69 |
| AEROPUERTOS ARG | AERNT | 01/feb/2027 | 6.875 | 90.00 | 13.91% | 1.49 | Y | 13/nov/2023 | 102.58 | Caa3 | 150,000 | USP0092MAE32 |
| CIA LATINO AMER | CLISA | 25/jul/2027 | 8.800 | 27.88 | 59.70% | 2.56 | N | - | - | CCC- | 100 | US20445PAH82 |
| AEROPUERTOS ARG | AERNT | 01/nov/2028 | 9.500 | 105.00 | 8.06% | 2.79 | Y | - | - | | 150,000 | XS2405877007 |
| AEROPUERTOS ARG | AERNT | 01/ago/2031 | 8.500 | 94.00 | 9.94% | 4.68 | Y | 01/feb/2026 | 104.25 | Caa3 | 1,000 | US00786PAE43 |



BONOS CORPORATIVOS EN DÓLARES

Precios en USD (OTC en el exterior) - Datos Técnicos y Curvas

| Especie | Ticker (Refinitiv) | Vencimiento | Cupón (%) | Precio al 09-oct-23 | T.I.R. | Duration | Call (Si o No) | Fecha Call | Precio Call | Rating | Mínimo (V/N) | Código ISIN |
|---------------------------|--------------------|-------------|-----------|---------------------|--------|----------|----------------|-------------|-------------|--------|--------------|--------------|
| ALIMENTOS | | | | | | | | | | | | |
| MASTELLONE HNOS | MASTO | 30/jun/2026 | 10.950 | 104.50 | 8.42% | 0.10 | Y | 24/oct/2023 | 105.48 | B- | 1 | USP6460MAK01 |
| ADECOAGRO SA | AGROZ | 21/sep/2027 | 6.000 | 93.50 | 7.95% | 3.55 | Y | 08/nov/2023 | 102.00 | Ba2 | 150,000 | USL00849AA47 |
| ARCOR SAIC | GRUARA | 09/oct/2027 | 8.250 | 100.50 | 8.04% | 1.37 | Y | 09/abr/2024 | 104.13 | B+ | 1,000 | USP04559AW36 |
| TELECOMUNICACIONES | | | | | | | | | | | | |
| TELECOM ARGENTINA | TECOBT | 06/ago/2025 | 8.500 | 96.75 | 11.21% | 1.25 | N | - | - | RR3 | 1,000 | US879273AT79 |
| TELECOM ARGENTINA | TECOBT | 18/jul/2026 | 8.000 | 92.75 | 11.10% | 2.48 | Y | 08/nov/2023 | 104.00 | B | 1,000 | USP9028NAV30 |
| CONSUMO MINORISTA | | | | | | | | | | | | |
| ARCOS DORADOS HL | ARCO | 04/abr/2027 | 5.875 | 94.50 | 7.70% | 3.19 | Y | 08/nov/2023 | 101.96 | BB+ | 100,000 | US03965UAC45 |





BONOS CORPORATIVOS EN DÓLARES

Precios en ARS (ByMA) - Datos Técnicos

| Especie | Ticker (Refinitiv) | Fecha de Vencimiento | Monto en circulación (en M de USD) | Cupón (%) | Precio al 09-oct-2023 | T.I.R. | Duration | Rating | Mínimo (V/N) | Sector | Código ISIN |
|--|--------------------|----------------------|------------------------------------|-----------|-----------------------|---------|----------|-----------|--------------|---------------------------------|--------------|
| BONOS EN DÓLARES (LEGISLACIÓN EXTRANJERA) | | | | | | | | | | | |
| PAN AMERICAN ENERGY | PNC90 | 15-nov-2023 | 14.85 | 5.000 | 54,700.00 | - | - | WD | 150,000 | Oil and Gas | USE7S78BAA00 |
| RAGHSA | RA310 | 21-mar-2024 | 91.89 | 7.250 | 89,500.00 | 12.24% | 0.42 | Caa2 | 1,000 | Service - Other | USP79849AC24 |
| YPF | YPCUO | 04-abr-2024 | 346.31 | 8.750 | 34,000.00 | 20.13% | 0.44 | CCC- | 1,000 | Oil and Gas | US984245AK63 |
| CAPEX | CAC20 | 15-may-2024 | 41.45 | 6.875 | 83,945.00 | 14.09% | 0.54 | AA-(arg) | 1,000 | Utility - Other | US139612AE59 |
| CIA GRAL COMBUSTIBLES | CP170 | 08-mar-2025 | 117.86 | 9.500 | 56,650.00 | 11.40% | 0.98 | - | 1,000 | Chemicals | USP3063DAB84 |
| EDENOR | DNC10 | 12-may-2025 | 52.71 | 9.750 | 50,800.00 | 12.87% | 1.36 | Caa3 | 2,000 | Utility - Other | USP3710FAM60 |
| PAN AMERICAN ENERGY | PNMCO | 21-jul-2025 | 105.15 | 7.250 | 79,200.00 | - | - | BB- | 1,000 | Oil and Gas | XS2502495786 |
| YPF | YCA60 | 28-jul-2025 | 1,131.77 | 8.500 | 78,998.00 | 18.11% | 1.53 | CCC- | 1,000 | Oil and Gas | US984245AL47 |
| TELECOM ARGENTINA | TLC50 | 06-ago-2025 | 260.54 | 8.500 | 61,300.00 | 11.21% | 1.18 | B | 1,000 | Telecommunications | USP9028NAZ44 |
| YPF | YMCHO | 12-feb-2026 | 596.76 | 9.000 | 65,630.00 | 13.66% | 1.03 | Caa3 | 1 | Oil and Gas | USP989MJBR17 |
| MASTELLONE HNOS | MTCGO | 30-jun-2026 | 110.87 | 10.950 | 90,700.00 | - | - | B- | 1 | Food Processors | USP6460MAK01 |
| TELECOM ARGENTINA | TLC10 | 18-jul-2026 | 400.00 | 8.000 | 85,250.00 | 11.10% | 2.35 | B | 1,000 | Telecommunications | USP9028NAV30 |
| PAMPA ENERGIA | MGC90 | 08-dic-2026 | 292.80 | 9.500 | 98,200.00 | 8.32% | 1.86 | B | 1 | Utility - Other | USP7464EAH91 |
| AEROPUERTOS ARGENTINA 2000 | AERAO | 01-feb-2027 | 17.50 | 6.875 | 928.90 | 14.15% | 1.38 | Caa3 | 150,000 | Service - Other | US00786PAC86 |
| AEROPUERTOS ARGENTINA 2000 | AER10 | 01-feb-2027 | 63.17 | 9.375 | - | 14.32% | 1.36 | Caa3 | 150,000 | Service - Other | USP0092MAF07 |
| PAN AMERICAN ENERGY | PNDCO | 30-abr-2027 | 300.00 | 9.125 | 99,000.00 | 7.14% | 2.16 | AAA(arg) | 1,000 | Oil and Gas | USE7578BAB82 |
| RAGHSA | RAC40 | 04-may-2027 | 58.34 | 8.500 | 89,620.00 | 10.16% | 2.87 | Caa2 | 1,000 | Service - Other | USP79849AD07 |
| CLISA | CLSIO | 25-jul-2027 | 343.45 | 8.800 | 27,175.00 | 59.70% | 1.96 | CCC- | 100 | Building Products | USP3063XAJ74 |
| GENNENIA | GNCXO | 02-sep-2027 | 292.89 | 8.750 | 69,749.50 | 11.24% | 1.80 | CCC | 1,000 | Oil and Gas | USP46756BA25 |
| ARCOR | RCCJO | 09-oct-2027 | 265.43 | 8.250 | 94,050.00 | 8.04% | 2.42 | B+ | 1,000 | Consumer Products | USP04559AW36 |
| GEN MEDITERRANEA Y ROCA | MRCAO | 01-dic-2027 | 296.11 | 9.875 | 73,000.00 | 18.65% | 1.68 | CCC | 1 | Financial - Other | USP46214AC95 |
| PAMPA ENERGIA | MGC3X | 15-abr-2029 | 292.53 | 9.125 | 59,350.00 | 10.75% | 3.99 | B | 150,000 | Utility - Other | USP7464EAH92 |
| YPF | YMCIO | 30-jun-2029 | 747.83 | 9.000 | 79,155.00 | 14.22% | 3.15 | Caa3 | 1 | Oil and Gas | USP989MJBS99 |
| RAGHSA | RAC50 | 24-abr-2030 | 56.78 | 8.250 | 87,700.00 | 7.66% | 4.83 | - | 1,000 | Service - Other | USP79849AE89 |
| AEROPUERTOS ARGENTINA 2000 | ARC10 | 01-ago-2031 | 208.95 | 8.500 | 88,000.00 | 9.60% | 4.22 | Caa3 | 1,000 | Service - Other | USP0092MAJ29 |
| YPF | YMCJO | 30-sep-2033 | 575.65 | 7.000 | 65,990.00 | 12.47% | 5.70 | Caa3 | 1 | Oil and Gas | USP989MJBT72 |
| BONOS EN DÓLARES (LEGISLACIÓN ARGENTINA) | | | | | | | | | | | |
| JOHN DEERE | HJC80 | 07-oct-2023 | 0.00 | 5.500 | 47,470.00 | - | - | AA(arg) | 1 | Leasing | ARJDCC5600N9 |
| IRSA | IRC80 | 12-nov-2023 | 10.77 | 10.000 | 39,663.00 | 62.44% | 0.08 | AA(arg) | 1 | Financial - Other | ARIRSA5600F7 |
| CRESUD | CSJXO | 12-nov-2023 | 0.45 | 9.000 | 17,000.00 | - | - | AA(arg) | 1 | Food Processors | ARCRES5600H8 |
| JOHN DEERE | HJC60 | 18-dic-2023 | 18.00 | 9.500 | 11,008.58 | - | - | AA(arg) | 1 | Leasing | ARJDCC5600L3 |
| MSU ENERGY | RUC30 | 21-dic-2023 | 30.30 | 7.350 | 92,200.00 | - | - | A+(arg) | 1 | Utility - Other | ARMSUE560067 |
| GEN MEDITERRANEA | MRCEO | 10-ene-2024 | 14.07 | 7.500 | 87,000.00 | - | - | A(arg) | 1 | Financial - Other | ARGMCT5600B5 |
| VISTA ENERGY | VSC30 | 21-feb-2024 | 9.49 | 3.500 | 89,000.00 | - | - | AA+(arg) | 1 | Oilfield Machinery and Services | AROILG560033 |
| CIA GRAL COMBUSTIBLES | CP250 | 25-feb-2024 | 11.29 | 3.250 | 86,100.00 | - | - | AA-(arg) | 1 | Chemicals | ARCGC05600Q5 |
| ALUAR | LMS10 | 09-abr-2024 | 25.05 | 6.700 | 15,944.40 | -39.13% | 0.47 | AAA(arg) | 1 | Metals/Mining | ARALUA560013 |
| TARJETA NARANJA | TN520 | 30-abr-2024 | 7.50 | 5.000 | 29,360.00 | - | - | AA-(arg) | 1 | Service - Other | ARTANA5600Z9 |
| MSU ENERGY | RUC40 | 20-may-2024 | 15.20 | 7.500 | 92,800.00 | - | - | A+(arg) | 1 | Utility - Other | ARMSUE560075 |
| CRESUD | CS340 | 30-jun-2024 | 11.91 | 6.990 | 32,500.00 | - | - | AA+(arg) | 1 | Food Processors | ARCRES5600R7 |
| CRESUD | CSKZO | 06-jul-2024 | 6.39 | 6.990 | 27,555.00 | - | - | AA+(arg) | 1 | Food Processors | ARCRES5600Q9 |
| GEN MEDITERRANEA | MRCFO | 18-jul-2024 | 5.86 | 9.500 | 85,200.00 | - | - | A(arg) | 1 | Financial - Other | ARGMCT5600D1 |
| MSU ENERGY | RUC50 | 22-jul-2024 | 15.10 | 8.000 | 92,000.00 | - | - | A+(arg) | 1 | Utility - Other | ARMSUE560083 |
| VISTA ENERGY | VSCEO | 08-ago-2024 | 43.50 | 6.000 | 93,000.00 | - | - | AAA(arg) | 1 | Oilfield Machinery and Services | AROILG5600D1 |
| MSU | MSSAO | 12-sep-2024 | 24.50 | 7.500 | 87,500.00 | - | - | A+(arg) | 1 | Consumer Products | ARMSUS5600C2 |
| MSU ENERGY | RUC60 | 02-nov-2024 | 45.54 | 9.000 | 91,500.00 | - | - | A+(arg) | 1 | Utility - Other | ARMSUE560091 |
| GEN MEDITERRANEA | MRCIO | 07-nov-2024 | 11.49 | 9.500 | 89,999.00 | - | - | A(arg) | 1 | Financial - Other | ARGMCT5600G4 |
| EDENOR | DNC20 | 22-nov-2024 | 60.00 | 9.750 | 90,700.00 | - | - | A-(arg) | 1 | Utility - Other | ARENOR560040 |
| MSU ENERGY | RUC70 | 12-ene-2025 | 15.10 | 7.500 | 87,600.00 | - | - | A+(arg) | 1 | Utility - Other | ARMSUE5600A6 |
| VISTA ENERGY | VSCGO | 20-ene-2025 | 13.50 | 4.000 | 73,000.00 | - | - | AAA(arg) | 1 | Oilfield Machinery and Services | AROILG5600F6 |
| CRESUD | CS370 | 15-mar-2025 | 24.39 | 5.500 | 50,470.00 | - | - | AA+(arg) | 1 | Food Processors | ARCRES5600U1 |
| IRSA | IRCGO | 25-mar-2025 | 61.75 | 8.000 | 90,900.00 | - | - | AA+(arg) | 1 | Financial - Other | ARIRSA5600V4 |
| CELULOSA ARGENTINA | CRCEO | 04-jun-2025 | 30.09 | 10.000 | 42,875.00 | 2.96% | 0.93 | BBB-(arg) | 1 | Industrials - Other | ARCELU5600B0 |
| AES ARGENTINA GEN | AEC10 | 14-jul-2025 | 30.51 | 8.000 | 87,685.00 | - | - | - | 1 | Utility - Other | ARAESA560065 |
| GENNEIA | GN400 | 14-jul-2025 | 10.87 | 5.500 | 87,900.00 | 7.74% | 1.63 | - | 1 | Oil and Gas | AREMGA5600S5 |
| VISTA ENERGY | VSCLO | 20-jul-2025 | 13.50 | 4.500 | 78,500.00 | - | - | AAA(arg) | 1 | Oilfield Machinery and Services | AROILG5600K6 |



BONOS CORPORATIVOS EN DÓLARES

Precios en ARS (ByMA) - Datos Técnicos

| Especie | Ticker (Refinitiv) | Fecha de Vencimiento | Monto en circulación (en M de USD) | Cupón (%) | Precio al 09-oct-2023 | T.I.R. | Duration | Rating | Mínimo (V/N) | Sector | Código ISIN |
|---|--------------------|----------------------|------------------------------------|-----------|-----------------------|--------|----------|----------|--------------|---------------------------------|--------------|
| IRSA | IRCHO | 25-jul-2025 | 28.25 | 7.000 | 92,000.00 | - | - | AA+(arg) | 1 | Financial - Other | ARIRSA5600U6 |
| GEN MEDITERRANEA | MRCLO | 27-jul-2025 | 19.36 | 9.500 | 87,000.00 | - | - | A(arg) | 1 | Financial - Other | ARGMCT5600J8 |
| PAMPA ENERGIA | MGCHO | 04-nov-2025 | 55.74 | 4.990 | 97,000.00 | - | - | AA+(arg) | 1 | Utility - Other | ARPAMP5600I3 |
| VISTA ENERGY | VSCFO | 10-nov-2025 | 40.51 | 6.250 | 99,900.00 | - | - | AAA(arg) | 1 | Oilfield Machinery and Services | AROILG5600E9 |
| ARCOR | RCCMO | 22-nov-2025 | 77.00 | 3.500 | 99,200.00 | 5.64% | 1.97 | AAA(arg) | 1 | Consumer Products | ARARCS5600I4 |
| IRSA | IRCIO | 07-dic-2025 | 25.00 | 5.000 | 83,000.00 | - | - | AA+(arg) | 1 | Financial - Other | ARIRSA5600W2 |
| CIA GRAL COMBUSTIBLES | CP32O | 09-dic-2025 | 12.90 | 6.000 | 80,300.00 | - | - | AA-(arg) | 1 | Chemicals | ARCGCO5600X1 |
| LOMA NEGRA | LOC2O | 21-dic-2025 | 71.72 | 6.500 | 95,500.00 | - | - | AAA(arg) | 1 | Building Products | ARLOMA5600A1 |
| GEN MEDITERRANEA | MRCOO | 20-ene-2026 | 9.16 | 9.500 | 88,200.00 | - | - | - | 1 | Financial - Other | ARGMCT5600L4 |
| YPF | YMCQO | 13-feb-2026 | 263.00 | 5.000 | 88,580.00 | 13.07% | 2.05 | AAA(arg) | 1 | Oil and Gas | ARYPFS5601W0 |
| CRESUD | CS38O | 03-mar-2026 | 70.57 | 8.000 | 94,950.00 | - | - | AA+(arg) | 1 | Food Processors | ARCRE5600V9 |
| IRSA | IRCFO | 03-mar-2026 | 70.57 | 8.000 | 91,999.00 | - | - | AA+(arg) | 1 | Food Processors | ARCRE5600V9 |
| MSU | MSSEO | 17-jul-2026 | 25.00 | 6.500 | 90,000.00 | - | - | - | 1 | Consumer Products | ARMSUS5600F5 |
| BONOS EN DÓLARES (DOLLAR LINKED) | | | | | | | | | | | |
| FUTUROS Y OPCIONES | FOS1O | 22-oct-2023 | 12.31 | 0.000 | 33,000.00 | - | - | AA-(arg) | 1 | Service - Other | ARFUOP5600I8 |
| PETROQUIMICA COM RIVADAVIA | PQCAO | 27-oct-2023 | 23.99 | 4.000 | 36,400.00 | - | - | AA-(arg) | 1 | Chemicals | ARPETQ560085 |
| MASTELLONE HNOS | MTCHO | 25-dic-2023 | 11.88 | 5.500 | 20,515.00 | - | - | - | 1 | Food Processors | ARMAST5600Z3 |
| SAN MIGUEL | SNS7O | 18-ene-2024 | 50.00 | 4.000 | 44,520.50 | - | - | A-(arg) | 1 | Financial - Other | ARSMIG5600D0 |
| SAN MIGUEL | SN5BO | 19-feb-2024 | 45.00 | 4.990 | 35,000.00 | - | - | A-(arg) | 1 | Financial - Other | ARSMIG5600B4 |
| VISTA ENERGY | VSC7O | 10-mar-2024 | 0.00 | 4.250 | 26,600.00 | - | - | AAA(arg) | 1 | Oilfield Machinery and Services | AROILG560074 |
| PETROQUIMICA COM RIVADAVIA | PQCEO | 15-mar-2024 | 32.68 | 4.750 | 17,000.00 | - | - | AA-(arg) | 1 | Chemicals | ARPETQ5600B3 |
| GENNEIA | GN34O | 10-ago-2024 | 7.80 | 6.000 | 46,500.00 | - | - | A+(arg) | 1 | Oil and Gas | AREMGA5600J4 |
| CIA GRAL COMBUSTIBLES | CP24O | 25-ago-2024 | 0.00 | 1.375 | 11,046.72 | - | - | AA-(arg) | 1 | Chemicals | ARCGCO5600P7 |
| IRSA | IRCEO | 26-ago-2024 | 29.06 | 3.900 | 44,600.00 | - | - | AA+(arg) | 1 | Financial - Other | ARIRSA5600R2 |
| PAN AMERICAN ENERGY | PN5CO | 03-sep-2024 | 123.69 | 3.000 | 34,835.35 | - | - | AAA(arg) | 1 | Oil and Gas | ARAXIO5600B3 |
| GEN MEDITERRANEA | MRCJO | 07-nov-2024 | 21.11 | 3.750 | 50,800.00 | - | - | A(arg) | 1 | Financial - Other | ARGMCT5600H2 |
| SAN MIGUEL | SNS8O | 28-nov-2024 | 50.00 | 3.500 | 38,500.00 | - | - | A-(arg) | 1 | Financial - Other | ARSMIG5600E8 |
| VISTA ENERGY | VSC6O | 04-dic-2024 | 10.00 | 3.240 | 45,213.02 | - | - | AAA(arg) | 1 | Oilfield Machinery and Services | AROILG560066 |
| GENNEIA | GN35O | 23-dic-2024 | 38.18 | 0.000 | 18,250.00 | - | - | A+(arg) | 1 | Oil and Gas | AREMGA5600N6 |
| HIDROTEC | HC11P | 14-feb-2025 | 3.95 | 0.000 | - | - | - | - | 1 | Machinery | ARHIDR560039 |
| AEROPUERTOS ARGENTINA 2000 | AER6O | 21-feb-2025 | 35.99 | 2.000 | 17,863.60 | - | - | AA(arg) | 1 | Service - Other | ARAEAR5600A5 |
| CIA GRAL COMBUSTIBLES | CP30O | 10-mar-2025 | 150.00 | 0.000 | 40,000.00 | - | - | AA-(arg) | 1 | Chemicals | ARCGCO5600V5 |
| GEN MEDITERRANEA | MRCMO | 17-abr-2025 | 25.94 | 5.500 | 41,890.00 | - | - | A(arg) | 1 | Financial - Other | ARGMCT5600K6 |
| YPF | YMCOO | 25-abr-2025 | 147.39 | 0.000 | 59,000.00 | - | 2.36 | AAA(arg) | 1 | Oil and Gas | ARYPFS5601U4 |
| SAN MIGUEL | SNS9O | 26-jun-2025 | 88.60 | 5.000 | 37,287.00 | - | - | A-(arg) | 1 | Financial - Other | ARSMIG5600F5 |
| AEROPUERTOS ARGENTINA 2000 | AE10O | 05-jul-2025 | 25.06 | 0.000 | - | - | - | - | 1 | Service - Other | ARAEAR5600D9 |
| AEROPUERTOS ARGENTINA 2000 | AER7O | 08-jul-2025 | 20.00 | 0.000 | 34,750.00 | - | - | - | 1 | Service - Other | ARAEAR5600B3 |
| GEN MEDITERRANEA | MRCGO | 18-jul-2025 | 26.28 | 3.500 | 36,500.00 | - | - | A(arg) | 1 | Financial - Other | ARGMCT5600E9 |
| GEN MEDITERRANEA | MRCPO | 20-jul-2025 | 15.33 | 5.000 | 40,700.00 | - | - | - | 1 | Financial - Other | ARGMCT5600M2 |
| FUTUROS Y OPCIONES | FOS2O | 25-jul-2025 | 15.00 | 0.000 | 28,700.00 | - | - | AA-(arg) | 1 | Service - Other | ARFUOP560026 |
| ALUAR | LMS4O | 07-sep-2025 | 58.54 | 0.000 | 44,900.00 | - | - | AAA(arg) | 1 | Metals/Mining | ARALUA560039 |
| PAN AMERICAN ENERGY | PN7CO | 19-nov-2025 | 100.00 | 4.750 | 55,100.00 | - | - | AAA(arg) | 1 | Oil and Gas | ARAXIO5600E7 |
| YPF | YMCMO | 10-ene-2026 | 230.00 | 1.000 | 43,911.76 | - | 3.02 | AAA(arg) | 1 | Oil and Gas | ARYPFS5601S8 |
| OLEODUCTOS DEL VALLE | OLC1O | 18-abr-2026 | 71.16 | 0.000 | 30,290.00 | - | - | AAA(arg) | 1 | Gas Utility - Pipelines | AROLDV5600I3 |
| CIA GRAL COMBUSTIBLES | CP31O | 09-jun-2026 | 52.38 | 0.000 | 35,000.00 | - | - | AA-(arg) | 1 | Chemicals | ARCGCO5600W3 |
| SCC POWER SAN PEDRO | SPC1O | 27-jun-2026 | 33.50 | 4.000 | 26,080.00 | - | - | A-(arg) | 1 | Utility - Other | ARSPIE5600I1 |
| AEROPUERTOS ARGENTINA 2000 | AER9O | 19-ago-2026 | 30.95 | 0.000 | 21,715.00 | - | - | - | 1 | Service - Other | ARAEAR5600C1 |
| CIA GRAL COMBUSTIBLES | CP28O | 07-sep-2026 | 80.00 | 0.000 | 40,000.00 | - | - | AA-(arg) | 1 | Chemicals | ARCGCO5600T9 |
| CRESUD | CS40O | 21-dic-2026 | 38.21 | 0.000 | 21,049.00 | - | - | AA+(arg) | 1 | Food Processors | ARCRE5600X5 |
| VISTA ENERGY | VSCJO | 03-mar-2027 | 118.54 | 0.000 | 38,600.00 | - | - | AAA(arg) | 1 | Oilfield Machinery and Services | AROILG5600I0 |
| TELECOM ARGENTINA | TLCFO | 10-feb-2028 | 62.39 | 1.000 | 37,900.00 | - | - | AA+(arg) | 100 | Telecommunications | ARTECO5600G5 |
| PAN AMERICAN ENERGY | PNRCO | 07-ago-2028 | 60.00 | 1.000 | 38,077.00 | - | - | AAA(arg) | 1 | Oil and Gas | ARAXIO5600X7 |
| PAN AMERICAN ENERGY | PNICO | 07-feb-2032 | 80.00 | 4.250 | 29,852.91 | - | - | AAA(arg) | 1 | Oil and Gas | ARAXIO5600Q1 |
| AEROPUERTOS ARGENTINA 2000 | AER5O | 21-feb-2032 | 137.99 | 5.500 | 33,476.80 | - | - | AA(arg) | 1 | Service - Other | ARAEAR560090 |



BONOS CORPORATIVOS EN DÓLARES

Precios en USD (ByMA) - Datos Técnicos

| Especie | Ticker (Refinitiv) | Fecha de Vencimiento | Monto en circulación (en M de USD) | Cupón (%) | Precio al 09-oct-2023 | T.I.R. | Duration | Rating | Mínimo (V/N) | Sector | Código ISIN |
|--|--------------------|----------------------|------------------------------------|-----------|-----------------------|---------|----------|-----------|--------------|---------------------------------|---------------|
| BONOS EN DÓLARES (LEGISLACIÓN EXTRANJERA) | | | | | | | | | | | |
| PAN AMERICAN ENERGY | PNC9D | 15-nov-2023 | 14.85 | 5.000 | 105.00 | - | - | WD | 150,000 | Oil and Gas | USE7S78BAA00 |
| YPF | YPCUD | 04-abr-2024 | 346.31 | 8.750 | 39.50 | 20.13% | 0.44 | CCC- | 1,000 | Oil and Gas | USP989MJAY76 |
| CAPEX | CAC2D | 15-may-2024 | 41.45 | 6.875 | 101.50 | 14.09% | 0.54 | RR3 | 1,000 | Utility - Other | USP20058AC08 |
| CIA GRAL COMBUSTIBLES | CP17D | 08-mar-2025 | 117.86 | 9.500 | 66.00 | 11.40% | 0.98 | - | 1,000 | Chemicals | USP3063DAB84 |
| EDENOR | DNC1D | 12-may-2025 | 52.71 | 9.750 | 103.45 | 12.87% | 1.36 | Caa3 | 2,000 | Utility - Other | USP3710FAM60 |
| YPF | - | 28-jul-2025 | 1,131.77 | 8.500 | - | 18.10% | 1.53 | CCC- | 1,000 | Oil and Gas | USP989MJBEO4 |
| TELECOM ARGENTINA | TLC5D | 06-ago-2025 | 260.54 | 8.500 | 72.50 | 11.21% | 1.18 | B | 1,000 | Telecommunications | USP9028NAZ44 |
| BANCO HIPOTECARIO | HBC4D | 14-oct-2025 | 47.00 | 9.750 | 62.00 | 11.56% | 0.85 | Caa3 | 15,000 | Banking | US05961AAH68 |
| YPF | YMCHD | 12-feb-2026 | 596.76 | 9.000 | 80.00 | 13.66% | 1.03 | Caa3 | 1 | Oil and Gas | USP989MJBRI17 |
| MASTELLONE HNOS | MTCGD | 30-jun-2026 | 110.87 | 10.950 | 107.00 | - | - | B- | 1 | Food Processors | USP6460MAK01 |
| TELECOM ARGENTINA | TLC1D | 18-jul-2026 | 400.00 | 8.000 | 103.95 | 11.10% | 2.35 | B | 1,000 | Telecommunications | USP9028NAV30 |
| PAMPA ENERGIA | MGC9D | 08-dic-2026 | 292.80 | 9.500 | 115.00 | 8.32% | 1.86 | B | 1 | Utility - Other | USP7464EAH91 |
| PAN AMERICAN ENERGY | PNDCC | 30-abr-2027 | 300.00 | 9.125 | 118.00 | 7.14% | 2.16 | AAA(arg) | 1,000 | Oil and Gas | USE7S78BAB82 |
| RAGHSA | RAC4D | 04-may-2027 | 58.34 | 8.500 | 106.75 | 10.16% | 2.87 | Caa2 | 1,000 | Service - Other | USP79849AD07 |
| CLISA | CLSID | 25-jul-2027 | 343.45 | 8.800 | 31.99 | 59.70% | 1.96 | CCC- | 100 | Building Products | USP3063XAJ74 |
| AEROPUERTOS ARGENTINA 2000 | AERAD | 01-feb-2027 | 17.50 | 6.875 | 71.38 | 13.91% | 1.38 | Caa3 | 150,000 | Service - Other | USP0092MAE32 |
| AEROPUERTOS ARGENTINA 2000 | AER1D | 01-feb-2027 | 63.17 | 9.375 | - | 14.32% | 1.36 | Caa3 | 150,000 | Service - Other | USP0092MAF07 |
| GENNEIA | GNCXD | 02-sep-2027 | 292.89 | 8.750 | 84.29 | 11.24% | 1.80 | CCC | 1,000 | Oil and Gas | USP46756BA25 |
| ARCOR | RCCJD | 09-oct-2027 | 265.43 | 8.250 | 110.50 | 8.04% | 2.42 | B+ | 1,000 | Consumer Products | USP04559AW36 |
| GEN MEDITERRANEA y ROCA | MRCAD | 01-dic-2027 | 296.11 | 9.875 | 89.50 | 18.65% | 1.68 | CCC | 1 | Financial - Other | USP46214AC95 |
| IRSA | IRCFD | 22-jun-2028 | 171.20 | 8.750 | 108.00 | 9.89% | 2.57 | B | 1 | Financial - Other | USP58809BH95 |
| AEROPUERTOS ARGENTINA 2000 | AER4D | 01-nov-2028 | 62.02 | 9.500 | - | - | - | - | 150,000 | Service - Other | XS2405877007 |
| PAMPA ENERGIA | MGC3Z | 15-abr-2029 | 292.53 | 9.125 | 100.00 | 10.75% | 3.99 | B | 150,000 | Utility - Other | USP7464EAB22 |
| YPF | YMCID | 30-jun-2029 | 747.83 | 9.000 | 95.00 | 14.22% | 3.15 | Caa3 | 1 | Oil and Gas | USP989MJBS99 |
| AEROPUERTOS ARGENTINA 2000 | ARC1D | 01-ago-2031 | 208.95 | 8.500 | 103.90 | 9.60% | 4.22 | Caa3 | 1,000 | Service - Other | USP0092MAJ29 |
| YPF | YMCJD | 30-sep-2033 | 575.65 | 7.000 | 82.95 | 12.47% | 5.70 | Caa3 | 1 | Oil and Gas | USP989MJBT72 |
| BONOS EN DÓLARES (LEGISLACIÓN ARGENTINA) | | | | | | | | | | | |
| JOHN DEERE | HJC8D | 07-oct-2023 | 0.00 | 5.500 | - | - | - | AA(arg) | 1 | Leasing | ARJDCC5600N9 |
| IRSA | IRC8D | 12-nov-2023 | 10.77 | 10.000 | 43.15 | 62.44% | 0.08 | AA(arg) | 1 | Financial - Other | ARIRSA5600F7 |
| CRESUD | CSJXD | 12-nov-2023 | 0.45 | 9.000 | 35.99 | - | - | AA(arg) | 1 | Food Processors | ARCRES5600H8 |
| JOHN DEERE | HJC6D | 18-dic-2023 | 18.00 | 9.500 | 20.40 | - | - | AA(arg) | 1 | Leasing | ARJDCC5600L3 |
| MSU ENERGY | RUC3D | 21-dic-2023 | 30.30 | 7.350 | 107.50 | - | - | A+(arg) | 1 | Utility - Other | ARMSUE560067 |
| GEN MEDITERRANEA | MRECD | 10-ene-2024 | 14.07 | 7.500 | 99.00 | - | - | A(arg) | 1 | Financial - Other | ARGMCT5600B5 |
| VISTA ENERGY | VSC3D | 21-feb-2024 | 9.49 | 3.500 | 118.00 | - | - | AA+(arg) | 1 | Oilfield Machinery and Services | AROILG560033 |
| CIA GRAL COMBUSTIBLES | CP25D | 25-feb-2024 | 11.29 | 3.250 | 105.00 | - | - | AA-(arg) | 1 | Chemicals | ARCRCO5600Q5 |
| JOHN DEERE | HJC9D | 16-mar-2024 | 10.00 | 3.000 | 96.69 | - | - | AA(arg) | 1 | Leasing | ARJDCC5600P4 |
| ALUAR | LMS1D | 09-abr-2024 | 25.05 | 6.700 | 19.50 | -39.13% | 0.47 | AAA(arg) | 1 | Metals/Mining | ARALUA5600I3 |
| TARJETA NARANJA | TN52D | 30-abr-2024 | 7.50 | 5.000 | 100.90 | - | - | AA-(arg) | 1 | Service - Other | ARTANA5600Z9 |
| MSU ENERGY | RUC4D | 20-may-2024 | 15.20 | 7.500 | 99.00 | - | - | A+(arg) | 1 | Utility - Other | ARMSUE560075 |
| JOHN DEERE | HJC7D | 25-jun-2024 | 5.02 | 8.000 | 40.00 | - | - | AA(arg) | 1 | Leasing | ARJDCC5600M1 |
| CRESUD | CS34D | 30-jun-2024 | 11.91 | 6.990 | 36.00 | - | - | AA+(arg) | 1 | Food Processors | ARCRES5600R7 |
| CRESUD | CSKZD | 06-jul-2024 | 6.39 | 6.990 | 35.10 | - | - | AA+(arg) | 1 | Food Processors | ARCRES5600Q9 |
| GEN MEDITERRANEA | MRFCD | 18-jul-2024 | 5.86 | 9.500 | 95.00 | - | - | A(arg) | 1 | Financial - Other | ARGMCT5600D1 |
| MSU ENERGY | RUC5D | 22-jul-2024 | 15.10 | 8.000 | 105.00 | - | - | A+(arg) | 1 | Utility - Other | ARMSUE560083 |
| VISTA ENERGY | VSCED | 08-ago-2024 | 43.50 | 6.000 | 108.50 | - | - | AAA(arg) | 1 | Oilfield Machinery and Services | AROILG5600D1 |
| MSU | MSSAD | 12-sep-2024 | 24.50 | 7.500 | 102.00 | - | - | A+(arg) | 1 | Consumer Products | ARMSUS5600C2 |
| MSU ENERGY | RUC6D | 02-nov-2024 | 45.54 | 9.000 | 111.90 | - | - | A+(arg) | 1 | Utility - Other | ARMSUE560091 |
| GEN MEDITERRANEA | MRCID | 07-nov-2024 | 11.49 | 9.500 | 104.50 | - | - | A(arg) | 1 | Financial - Other | ARGMCT5600G4 |
| EDENOR | DNC2D | 22-nov-2024 | 60.00 | 9.750 | 106.00 | - | - | A-(arg) | 1 | Utility - Other | ARENOR560040 |
| MSU ENERGY | RUC7D | 12-ene-2025 | 15.10 | 7.500 | 105.00 | - | - | A+(arg) | 1 | Utility - Other | ARMSUE5600A6 |
| CRESUD | CS37D | 15-mar-2025 | 24.39 | 5.500 | 100.00 | - | - | AA+(arg) | 1 | Food Processors | ARCRES5600U1 |
| IRSA | IRCGD | 25-mar-2025 | 61.75 | 8.000 | 106.40 | - | - | AA+(arg) | 1 | Financial - Other | ARIRSA5600V4 |
| CELULOSA ARGENTINA | CRCD | 04-jun-2025 | 30.09 | 10.000 | 50.58 | 2.96% | 0.93 | BBB-(arg) | 1 | Industrials - Other | ARCELU5600B0 |
| AES ARGENTINA GENERACION | AEC1D | 14-jul-2025 | 10.87 | 5.500 | 99.90 | 7.74% | 1.63 | - | 1 | Oil and Gas | AREMGA5600S5 |
| GENNEIA | GN40D | 14-jul-2025 | 10.87 | 5.500 | 99.50 | 7.74% | 1.63 | - | 1 | Oil and Gas | AREMGA5600S5 |
| IRSA | IRCHD | 25-jul-2025 | 28.25 | 7.000 | 108.00 | - | - | AA+(arg) | 1 | Financial - Other | ARIRSA5600U6 |



BONOS CORPORATIVOS EN DÓLARES

Precios en USD (ByMA) - Datos Técnicos

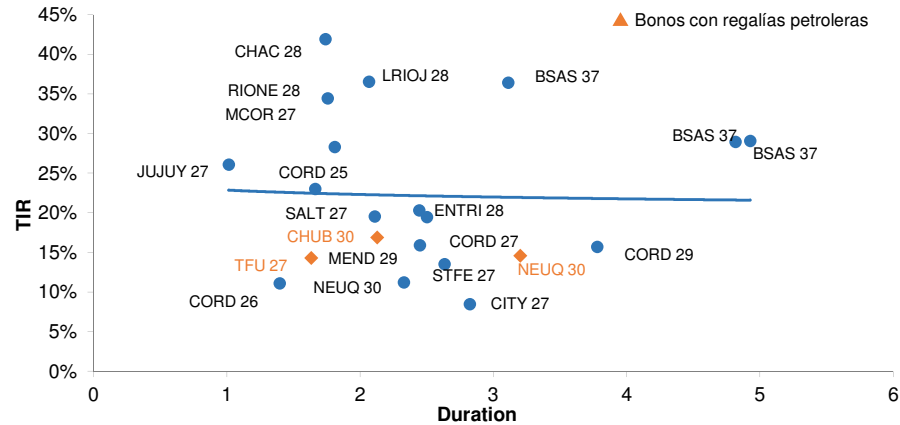
| Especie | Ticker (Refinitiv) | Fecha de Vencimiento | Monto en circulación (en M de USD) | Cupón (%) | Precio al 09-oct-2023 | T.I.R. | Duration | Rating | Mínimo (V/N) | Sector | Código ISIN |
|---|--------------------|----------------------|------------------------------------|-----------|-----------------------|--------|----------|----------|--------------|---|--------------|
| GEN MEDITERRANEA | MRCLD | 27-jul-2025 | 19.36 | 9.500 | 101.80 | - | - | A(arg) | 1 | Financiamiento - Otros | ARGMCT5600J8 |
| PAMPA ENERGIA | MGCHD | 04-nov-2025 | 55.74 | 4.990 | 113.00 | - | - | AA+(arg) | 1 | Utilidad - Otros | ARPAMP5600I3 |
| VISTA ENERGY | VSCFD | 10-nov-2025 | 40.51 | 6.250 | 114.00 | - | - | AAA(arg) | 1 | Industria de Maquinaria y Servicios de Campos de Petróleo | AROILG5600E9 |
| ARCOR | RCCMD | 22-nov-2025 | 77.00 | 3.500 | 119.95 | 5.64% | 1.97 | AAA(arg) | 1 | Productos de Consumo | ARARCS5600I4 |
| IRSA | IRCID | 07-dic-2025 | 25.00 | 5.000 | 106.45 | - | - | AA+(arg) | 1 | Financiamiento - Otros | ARIRSA5600W2 |
| CIA GRAL COMBUSTIBLES | CP32D | 09-dic-2025 | 12.90 | 6.000 | 94.00 | - | - | AA-(arg) | 1 | Químicos | ARCGCO5600X1 |
| LOMA NEGRA | LOC2D | 21-dic-2025 | 71.72 | 6.500 | 113.25 | - | - | AAA(arg) | 1 | Productos de Construcción | ARLOMA560041 |
| GEN MEDITERRANEA | MROCD | 20-ene-2026 | 9.16 | 9.500 | 98.00 | - | - | - | 1 | Financiamiento - Otros | ARGMCT5600L4 |
| YPF | YMCQD | 13-feb-2026 | 263.00 | 5.000 | 100.25 | 13.07% | 2.05 | AAA(arg) | 1 | Petróleo y Gas | ARYPFS5601W0 |
| CRESUD | CS38D | 03-mar-2026 | 70.57 | 8.000 | 112.95 | - | - | AA+(arg) | 1 | Productos de Consumo | ARCRES5600V9 |
| MSU | MSSD | 17-jul-2026 | 25.00 | 6.500 | 99.00 | - | - | - | 1 | Productos de Consumo | ARMSUS5600F5 |
| BONOS EN DÓLARES (DOLLAR LINKED) | | | | | | | | | | | |
| PETROQUIMICA COM RIVADAVIA | PQCAD | 27-oct-2023 | 23.99 | 4.000 | - | - | - | AA-(arg) | 1 | Químicos | ARPETQ560085 |
| MASTELLONE HNOS | MTCHD | 25-dic-2023 | 11.88 | 5.500 | - | - | - | - | 1 | Productos de Consumo | ARMAST560023 |
| PAMPA ENERGIA | MGCGD | 11-jul-2024 | 18,263.73 | 104.960 | 0.16 | 55.04% | 0.00 | AA+(arg) | 1,000 | Utilidad - Otros | ARPAMP5600H5 |
| NEWSAN | WNCHD | 21-jul-2024 | 1,774.36 | - | 0.14 | - | - | - | 1 | Electrónica | ARNEWS5600J1 |
| GENNEIA | GN34D | 10-ago-2024 | 7.80 | 6.000 | 53.90 | - | - | A+(arg) | 1 | Petróleo y Gas | AREMGA5600J4 |
| IRSA | IRCED | 26-ago-2024 | 29.06 | 3.900 | 73.50 | - | - | AA+(arg) | 1 | Financiamiento - Otros | ARIRSA5600R2 |
| AEROPUERTOS ARGENTINA 2000 | AER6D | 21-feb-2025 | 35.99 | 2.000 | - | - | - | AA(arg) | 1 | Servicio - Otros | ARAEAR5600A5 |
| AEROPUERTOS ARGENTINA 2000 | AE10D | 05-jul-2025 | 25.06 | 0.000 | - | - | - | - | 1 | Servicio - Otros | ARAEAR5600D9 |
| AEROPUERTOS ARGENTINA 2000 | AER7D | 08-jul-2025 | 20.00 | 0.000 | - | - | - | - | 1 | Servicio - Otros | ARAEAR5600B3 |
| AEROPUERTOS ARGENTINA 2000 | AER9D | 19-ago-2026 | 30.95 | 0.000 | - | - | - | - | 1 | Servicio - Otros | ARAEAR5600C1 |
| VISTA ENERGY | VSCJD | 03-mar-2027 | 118.54 | 0.000 | 51.19 | - | - | AAA(arg) | 1 | Industria de Maquinaria y Servicios de Campos de Petróleo | AROILG5600I0 |
| AEROPUERTOS ARGENTINA 2000 | AER5D | 21-feb-2032 | 137.99 | 5.500 | - | - | - | AA(arg) | 1 | Servicio - Otros | ARAEAR560090 |



BONOS PROVINCIALES EN DÓLARES

Precios en USD (OTC en el exterior) - Datos Técnicos y Curva

| Especie | Ticker (Refinitiv) | Vencimiento | Cupón (%) | Precio al 09-oct-23 | T.I.R. (%) | Duration | Rating | Mínimo (V/N) | Código ISIN |
|-------------------------------|--------------------|-------------|-----------|---------------------|------------|----------|--------|--------------|--------------|
| Provincia de Córdoba | CORDO | 10/dic/2025 | 6.875 | 82.50 | 26.09% | 1.02 | Ca | 150,000 | US74408DAC83 |
| Provincia de Córdoba | CORDO | 27/oct/2026 | 7.125 | 39.00 | 11.12% | 1.40 | - | 1 | ARPCDB320099 |
| Provincia de Jujuy | JUUJY | 20/mar/2027 | 8.375 | 79.00 | 23.04% | 1.66 | - | 150,000 | XS1686882298 |
| Provincia de Tierra del Fuego | TFU | 17/abr/2027 | 8.950 | 92.00 | 14.25% | 1.64 | Ca | 1,000 | US886516AC70 |
| Provincia de Córdoba | CORDO | 01/jun/2027 | 6.990 | 73.50 | 19.50% | 2.50 | Ca | 150,000 | USP79171AE79 |
| Ciudad de Buenos Aires | BCITY | 01/jun/2027 | 7.500 | 91.75 | 11.23% | 2.33 | - | - | XS1422866456 |
| Municipalidad de Córdoba | COROA | 29/sep/2027 | 7.000 | 68.50 | 28.33% | 1.81 | Ca | 150,000 | XS1496112407 |
| Provincia de Santa Fe | STAFE | 01/nov/2027 | 6.900 | 84.00 | 13.54% | 2.63 | Ca | 150,000 | US74409AAA79 |
| Provincia de Salta | SALTA | 01/dic/2027 | 8.500 | 79.00 | 19.54% | 2.11 | CC | 25,000 | US795751AB29 |
| Provincia del Chaco | CHACO | 18/feb/2028 | 6.500 | 62.45 | 34.47% | 1.76 | CC | 150,000 | US157223AA64 |
| Provincia de La Rioja | LARIJ | 24/feb/2028 | 6.500 | 55.00 | 36.58% | 2.07 | CC | 150,000 | USP6S52BAA07 |
| Provincia de Río Negro | RIONE | 10/mar/2028 | 6.875 | 53.88 | 41.94% | 1.74 | - | 150,000 | US744086AA73 |
| Provincia de Entre Ríos | ENTRI | 08/ago/2028 | 8.250 | 74.25 | 20.31% | 2.45 | WD | 1 | USP37341AA50 |
| Provincia de Córdoba | CORDO | 01/feb/2029 | 6.875 | 72.00 | 15.74% | 3.78 | - | - | US74408DAE40 |
| Provincia de Mendoza | MENDO | 19/mar/2029 | 5.750 | 78.00 | 15.94% | 2.45 | - | 1,000 | US586805AJ20 |
| Provincia de Neuquén | NEUQU | 12/may/2030 | 7.000 | 96.13 | 8.49% | 2.82 | CC | 150,000 | US64126BAC46 |
| Provincia de Chubut | CHUBT | 26/jul/2030 | 7.750 | 82.75 | 16.84% | 2.13 | Ca | 150,000 | US17127LAA35 |
| Provincia de Neuquén | NEUQU | 27/oct/2030 | 5.000 | 75.00 | 14.53% | 3.20 | CC | 1,000 | USP7169GAA78 |
| Provincia de Buenos Aires | BUENO | 01/sep/2037 | 5.500 | 26.50 | 28.99% | 4.82 | Ca | 1 | XS2385151811 |
| Provincia de Buenos Aires | BUENO | 01/sep/2037 | 6.375 | 30.38 | 36.44% | 3.11 | Ca | 1 | XS2385150417 |
| Provincia de Buenos Aires | BUENO | 01/sep/2037 | 5.000 | 24.50 | 29.09% | 4.93 | Ca | 1 | XS2385150847 |





| Empresa | TICKER | Precio (Local) | Capitalización Bursátil ARS M | Valor Nominal | Variación Porcentual | | | | | | | | Ticker ADR | Factor | Vol Prom. 90 días (nominales) | Vol Prom. 90 días (M de ARS) | P/B Trail. 12m | P/E Trail. 12m | P/E Forward | EV/EB Trail. 12m |
|---------------------------------|---------|----------------|-------------------------------|---------------|----------------------|--------------|--------|-----------|-------|------------|----------|-------|------------|-----------|-------------------------------|------------------------------|----------------|----------------|-------------|------------------|
| | | | | | 1 día | En la semana | 5 días | En el mes | 1 mes | Acum. 2023 | 12 meses | | | | | | | | | |
| AGROBUSINESS | | | | | | | | | | | | | | | | | | | | |
| Cresud SACIF y A | CRES.BA | 645.15 | 379,130.58 | 1 | 0.7 | 16.1 | 16.1 | 16.1 | 18.2 | 206.1 | 336.5 | CRESY | 10 | 316,188 | 204.0 | 1.8 | 10.0 | - | 37.4 | |
| Molinos Agro SA | MOLA.BA | 12,313.00 | 604,484.87 | 1 | -2.2 | 3.6 | 3.6 | 3.6 | -0.2 | 327.3 | 328.8 | | | 1,660 | 20.4 | 16.6 | 49.4 | 33.3 | 130.0 | |
| Ledesma SAAI | LEDE.BA | 501.50 | 220,660.00 | 1 | -0.2 | 22.0 | 22.0 | 22.0 | 54.4 | 324.6 | 467.5 | | | 37,524 | 18.8 | 2.7 | 16.2 | - | 10.3 | |
| Agrometal SAI | AGRO.BA | 220.50 | 22,031.73 | 1 | -2.5 | -1.9 | -1.9 | -1.9 | -7.4 | 224.3 | 227.7 | | | 210,542 | 46.4 | 2.8 | - | - | 6.0 | |
| ALIMENTOS Y BEBIDAS | | | | | | | | | | | | | | | | | | | | |
| Molinos Río de la Plata SA | MOLI.BA | 927.50 | 186,659.83 | 1 | 6.3 | 6.3 | 6.3 | 6.3 | 3.7 | 276.2 | 504.1 | | | 11,689 | 10.8 | 2.9 | 16.2 | 23.3 | 27.2 | |
| Inversora Juramento SA | INVJ.BA | 176.00 | 107,829.32 | 1 | 2.5 | 13.4 | 13.4 | 13.4 | 4.9 | 430.1 | 612.6 | | | 42,298 | 7.4 | 1.5 | - | 862.0 | 9.7 | |
| SA San Miguel AGICI y F | SAMI.BA | 460.50 | 18,733.05 | 0.10 | 4.9 | 15.3 | 15.3 | 15.3 | 9.4 | 239.2 | 268.4 | | | 49,656 | 22.9 | 1.9 | - | - | 0.0 | |
| AUTOPISTAS | | | | | | | | | | | | | | | | | | | | |
| Grupo Concesionario del Oeste | OEST.BA | 422.50 | 67,600.00 | 1 | 0.4 | 21.6 | 21.6 | 21.6 | 21.2 | 310.2 | 541.1 | | | 6,543 | 2.8 | 3.4 | 37.9 | - | 21.3 | |
| Autopistas del Sol SA | AUSO.BA | 1,044.50 | 31,798.54 | 1 | 1.4 | 5.2 | 5.2 | 5.2 | | 190.5 | 320.7 | | | 8,750 | 9.1 | 0.7 | 23.3 | - | 3.4 | |
| BANCOS Y FINANCIERAS | | | | | | | | | | | | | | | | | | | | |
| Grupo Financiero Galicia SA | GGAL.BA | 1,104.80 | 1,317,453.63 | 1 | -1.9 | 3.3 | 3.3 | 3.3 | -11.9 | 267.2 | 403.5 | GGAL | 10 | 1,900,450 | 2,099.6 | 1.5 | 13.8 | 11.0 | 2.7 | |
| Banco Macro SA | BMA.BA | 1,617.50 | 1,033,394.24 | 1 | 3.8 | 10.2 | 10.2 | 10.2 | -11.0 | 188.3 | 251.3 | BMA | 10 | 312,221 | 505.0 | 1.4 | 12.1 | 10.2 | 5.7 | |
| Banco Bbva Argentina SA | BBAR.BA | 1,197.85 | 733,326.65 | 1 | 0.7 | 16.9 | 16.9 | 16.9 | -8.5 | 163.1 | 268.8 | BBAR | 3 | 176,130 | 211.0 | 1.3 | 9.0 | - | 2.2 | |
| Bolsas y Mercados Argentinos SA | BYMA.BA | 502.00 | 382,775.00 | 1 | 2.4 | 2.4 | 2.4 | 2.4 | 7.8 | 136.5 | 183.4 | | | 358,279 | 179.9 | 4.0 | 25.6 | - | 21.2 | |
| Banco Patagonia SA | BPAT.BA | 317.00 | 220,568.42 | 1 | -0.5 | 2.9 | 2.9 | 2.9 | -6.6 | 165.5 | 214.4 | | | 8,860 | 2.8 | 0.9 | 8.1 | - | 2.0 | |
| Grupo Supervielle SA | SUPV.BA | 362.20 | 142,944.72 | 1 | -0.6 | 0.9 | 0.9 | 0.9 | -13.9 | 136.2 | 218.0 | SUPV | 5 | 422,717 | 153.1 | 1.0 | 31.5 | 17.8 | 3.4 | |
| Banco Hipotecario SA | BHIP.BA | 40.40 | 28,396.42 | 1 | 3.2 | 2.4 | 2.4 | 2.4 | -8.7 | 114.9 | 254.4 | | | 528,320 | 21.3 | 0.3 | 5.3 | - | 0.0 | |
| Grupo Financiero Valores | VALO.BA | 128.75 | 110,536.35 | 1 | 4.3 | 6.4 | 6.4 | 6.4 | -0.3 | 96.3 | 117.5 | | | 617,383 | 79.5 | 4.1 | 46.5 | - | 12.4 | |
| ENTRETENIMIENTO | | | | | | | | | | | | | | | | | | | | |
| Boldt SA | BOLT.BA | 17.20 | 51,600.00 | 1 | 9.9 | 15.1 | 15.1 | 15.1 | 11.7 | 148.6 | 205.5 | | | 556,242 | 9.6 | 3.1 | - | - | 0.0 | |
| CONSUMO | | | | | | | | | | | | | | | | | | | | |
| Mirgor SACIFIA | MIRG.BA | 8,627.00 | 155,263.70 | 0.10 | 1.8 | 3.3 | 3.3 | 3.3 | -6.2 | 55.9 | 129.8 | | | 8,736 | 75.4 | 1.5 | 129.9 | - | 3.1 | |
| Laboratorios Richmond SACIF | RICH.BA | 546.00 | 7,735.27 | 1 | 3.0 | 6.0 | 6.0 | 6.0 | -7.8 | 40.4 | 59.6 | | | 6,179 | 3.4 | 0.5 | - | - | 11.0 | |
| Domec | DOME.BA | 20.00 | 1,998.34 | 1 | 0.0 | 3.6 | 3.6 | 3.6 | -9.1 | 33.3 | 25.0 | | | 5,491 | 0.1 | 1.2 | - | - | 0.0 | |
| Havanna Holding SA | HAVA.BA | 2,350.00 | 30,107.43 | 1 | 1.3 | -3.4 | -3.4 | -3.4 | 0.2 | 326.7 | 577.3 | | | 10,044 | 23.6 | 3.5 | 37.5 | - | 6.0 | |
| MEDIOS | | | | | | | | | | | | | | | | | | | | |
| Cablevision Holding SA | CVH.BA | 1,908.50 | 231,130.96 | 1 | 0.6 | 1.5 | 1.5 | 1.5 | -1.7 | 91.6 | 178.2 | | | 15,796 | 30.1 | 0.5 | - | 83.7 | 6.1 | |
| Grupo Clarin SA | GCLA.BA | 638.00 | 44,115.28 | 1 | 6.7 | 16.1 | 16.1 | 16.1 | -1.2 | 222.2 | 204.5 | | | 12,778 | 8.2 | 0.7 | - | 22.1 | 2.9 | |
| PAPEL Y CELULOSA | | | | | | | | | | | | | | | | | | | | |
| Celulosa Argentina SA | CELU.BA | 426.50 | 43,051.67 | 0.01 | 1.8 | 2.9 | 2.9 | 2.9 | 2.6 | 276.6 | 439.9 | | | 20,666 | 8.8 | 2.1 | - | - | 3.2 | |
| PETRÓLEO Y GAS | | | | | | | | | | | | | | | | | | | | |
| YPF SA | YPFD.BA | 9,955.15 | 3,911,728.24 | 10 | -3.3 | -0.7 | -0.7 | -0.7 | -2.8 | 216.3 | 345.8 | YPF | 1 | 251,544 | 2,504.2 | 1.4 | 12.9 | 4.0 | 6.7 | |
| Sociedad Comercial del Plata SA | COME.BA | 46.00 | 263,059.58 | 1 | 4.9 | 7.6 | 7.6 | 7.6 | -8.3 | 134.6 | 226.8 | | | 3,643,803 | 167.6 | 2.3 | 13.4 | 6.5 | 20.1 | |



| Empresa | TICKER | Precio (Local) | Capitalización Bursátil ARS M | Valor Nominal | Variación Porcentual | | | | | | | Ticker ADR | Factor | Vol Prom. 90 días (nominales) | Vol Prom. 90 días (M de ARS) | P/B Trail. 12m | P/E Trail. 12m | P/E Forward | EV/EB Trail. 12m |
|-----------------------------------|----------|----------------|-------------------------------|---------------|----------------------|--------------|--------|-----------|-------|------------|----------|------------|--------|-------------------------------|------------------------------|----------------|----------------|-------------|------------------|
| | | | | | 1 día | En la semana | 5 días | En el mes | 1 mes | Acum. 2023 | 12 meses | | | | | | | | |
| REAL ESTATE Y CONSTRUCCIÓN | | | | | | | | | | | | | | | | | | | |
| Loma Negra | LOMA.BA | 1,056.95 | 629,970.20 | 0.10 | -2.9 | 5.8 | 5.8 | 5.8 | 15.0 | 133.0 | 163.6 | LOMA | 5 | 253,598 | 268.0 | 4.3 | 30.9 | 13.7 | 13.3 |
| IRSA | IRSA.BA | 753.15 | 554,125.69 | 10 | 14.4 | 20.1 | 20.1 | 20.1 | 31.5 | 365.1 | 534.6 | IRS | 10 | 168,172 | 126.7 | 1.5 | 9.5 | - | 19.5 |
| Holcim Argentina SA | HARG.BA | 711.00 | 260,043.21 | 1 | -0.8 | 6.9 | 6.9 | 6.9 | -1.3 | 182.9 | 272.1 | | | 43,267 | 30.8 | 2.5 | 14.5 | - | 9.8 |
| SIDERO-METALURGIA | | | | | | | | | | | | | | | | | | | |
| Aluar Aluminio Argentino SAIC | ALUA.BA | 841.00 | 2,354,800.00 | 1 | 10.2 | 28.0 | 28.0 | 28.0 | 43.5 | 376.4 | 561.4 | | | 923,249 | 776.5 | 8.9 | 34.2 | - | 47.1 |
| Ternium Argentina SA | TXAR.BA | 799.00 | 3,606,167.68 | 1 | 9.5 | 30.1 | 30.1 | 30.1 | 51.9 | 252.0 | 420.5 | TXAR | 10 | 866,465 | 692.3 | 3.0 | 29.9 | 13.6 | 18.8 |
| TELECOMUNICACIONES | | | | | | | | | | | | | | | | | | | |
| Telecom Argentina SA | TECO2.BA | 894.05 | 561,050.02 | 1 | -0.8 | 14.4 | 14.4 | 14.4 | 10.4 | 150.8 | 245.4 | TEO | 5 | 182,093 | 162.8 | 0.5 | - | 145.8 | 4.6 |
| UTILITIES ELECTRICIDAD | | | | | | | | | | | | | | | | | | | |
| Pampa Energía SA | PAMP.BA | 1,336.30 | 1,851,119.25 | 1 | 1.5 | 10.5 | 10.5 | 10.5 | 2.2 | 203.8 | 345.4 | PAM | 25.0 | 866,387 | 1,157.8 | 2.8 | 15.9 | - | 13.8 |
| Central Puerto SA | CEPU.BA | 536.70 | 811,902.47 | 1 | 6.4 | 13.5 | 13.5 | 13.5 | 7.2 | 153.8 | 289.8 | CEPU | 10.0 | 864,524 | 464.0 | 2.0 | 56.6 | - | 12.9 |
| Edenor | EDN.BA | 521.25 | 230,502.16 | 1 | 5.1 | 8.2 | 8.2 | 8.2 | 7.9 | 282.0 | 395.5 | EDN | 20.0 | 345,384 | 180.0 | 1.3 | - | - | 0.0 |
| Enel Generacion Costanera | CECO2.BA | 324.50 | 227,606.48 | 1 | 0.6 | 7.5 | 7.5 | 7.5 | 19.7 | 185.3 | 414.3 | | | 67,576 | 21.9 | 4.2 | - | - | 22.5 |
| Transener | TRAN.BA | 504.50 | 109,925.58 | 1 | 4.6 | 13.8 | 13.8 | 13.8 | 15.7 | 173.4 | 452.6 | | | 437,282 | 220.6 | 0.9 | 29.2 | 8.2 | 5.5 |
| EDESAL Holding SA | EDLH.BA | 13.79 | 1,029.49 | 1 | N.D | N.D | N.D | N.D | N.D | N.D | N.D | | | 0 | 0.0 | 0.1 | - | - | 0.0 |
| UTILITIES GAS | | | | | | | | | | | | | | | | | | | |
| Transportadora de Gas del Sur | TGSU2.BA | 1,907.00 | 723,546.19 | 1 | 0.6 | 13.9 | 13.9 | 13.9 | 7.3 | 135.1 | 272.8 | TGS | 5.0 | 247,531 | 472.0 | 1.7 | 46.8 | 12.4 | 10.2 |
| Naturgy BAN SA | GBAN.BA | 388.50 | 61,971.42 | 1 | 6.6 | 7.6 | 7.6 | 7.6 | 1.4 | 122.3 | 208.9 | | | 3,679 | 1.4 | 1.3 | 27.3 | - | 9.6 |
| Camuzzi Gas Pampeana SA | CGPA2.BA | 461.00 | 153,515.26 | 1 | 9.5 | 5.9 | 5.9 | 5.9 | -14.0 | 118.5 | 332.9 | | | 17,981 | 8.3 | 6.8 | ##### | - | 430.0 |
| MetroGAS SA | METR.BA | 257.00 | 71,675.73 | 1 | 5.9 | 15.1 | 15.1 | 15.1 | -10.0 | 154.5 | 257.9 | | | 31,434 | 8.1 | 0.7 | 3.6 | - | 9.0 |
| Transportadora de Gas del Norte | TGNO4.BA | 856.00 | 75,158.46 | 1 | 8.1 | 12.6 | 12.6 | 12.6 | 6.5 | 138.1 | 435.8 | | | 287,579 | 246.2 | 0.4 | - | - | 3.5 |
| Distribuidora de Gas Cuyana SA | DGCU2.BA | 403.50 | 39,480.33 | 1 | 4.0 | 10.4 | 10.4 | 10.4 | 7.6 | 115.2 | 385.0 | | | 136,163 | 54.9 | 1.0 | - | - | 12.8 |



| Empresa | TICKER | P/S Trail. 12m | Div Yield (%) | Marg. Bruto (%) | Marg. EBIT (%) | Marg. EBITDA (%) | Marg. Neto (%) | ROE (%) | ROA (%) | PN/A (%) | Acciones en Circulación (en M) | Free Float (en M) | Free Float (en %) | Ventas netas (en M de USD) | Res. Neto (en M de USD) | Activo (en M de USD) | Pasivo (en M de USD) | PN (en M de USD) |
|---------------------------------|---------|----------------------|---------------------|-----------------------|----------------------|------------------------|----------------------|------------|------------|-------------|--------------------------------------|-------------------------|-------------------------|-------------------------------|-------------------------------|----------------------------|----------------------------|------------------------|
| AGROBUSINESS | | | | | | | | | | | | | | | | | | |
| Cresud SACIF y A | CRES.BA | 2.0 | 2.6 | 38.1 | 10.6 | 12.0 | 39.5 | 21.9 | 4.3 | 19.5 | 587.7 | 319.7 | 54.4 | 741.7 | 164.5 | 4,165.8 | 3,355.4 | 810.4 |
| Molinos Agro SA | MOLA.BA | 0.9 | 3.0 | 2.3 | 0.5 | 0.7 | 1.7 | 40.4 | 7.2 | 17.9 | 48.9 | 48.9 | 100.0 | 2,742.5 | 47.7 | 792.9 | 650.9 | 142.0 |
| Ledesma SAAI | LEDE.BA | 1.3 | 2.2 | 33.6 | 9.2 | 13.4 | 8.1 | 17.4 | 10.7 | 61.4 | 440.0 | 42.0 | 9.6 | 699.4 | 56.7 | 560.7 | 216.2 | 344.5 |
| Agrometal SAI | AGRO.BA | 1.6 | 2.4 | 36.5 | 23.3 | 25.7 | -4.6 | -10.8 | -6.7 | 61.7 | 100.0 | 100.0 | 100.0 | 55.2 | -2.5 | 50.4 | 19.3 | 31.1 |
| ALIMENTOS Y BEBIDAS | | | | | | | | | | | | | | | | | | |
| Molinos Rio de la Plata SA | MOLI.BA | 1.0 | 0.6 | 22.6 | 1.2 | 4.2 | 6.3 | 24.1 | 10.3 | 42.8 | 200.6 | 200.6 | 100.0 | 715.1 | 44.8 | 590.5 | 337.9 | 252.6 |
| Inversora Juramento SA | INVJ.BA | 1.9 | 0.0 | 25.7 | 17.6 | 20.4 | -2.9 | -3.1 | -1.8 | 57.6 | 613.2 | 613.2 | 100.0 | 217.1 | -6.4 | 482.0 | 204.2 | 277.9 |
| SA San Miguel AGICI y F | SAMI.BA | 1.2 | 0.0 | -8.7 | -36.1 | -19.4 | -37.9 | -62.8 | -6.2 | 9.9 | 40.7 | 40.7 | 100.0 | 61.9 | -23.4 | 399.7 | 360.3 | 39.4 |
| AUTOPISTAS | | | | | | | | | | | | | | | | | | |
| Grupo Concesionario del Oeste | OEST.BA | 3.5 | 0.0 | 33.9 | 14.9 | 16.2 | 9.4 | 12.9 | 6.9 | 54.1 | 78.4 | 0.0 | 0.0 | 74.2 | 7.0 | 141.8 | 65.1 | 76.6 |
| Autopistas del Sol SA | AUSO.BA | 1.0 | 0.5 | 47.6 | 23.6 | 25.6 | 12.1 | 12.4 | 7.2 | 58.0 | 30.5 | 30.5 | 100.0 | 127.5 | 15.4 | 303.9 | 127.7 | 176.1 |
| BANCOS Y FINANCIERAS | | | | | | | | | | | | | | | | | | |
| Grupo Financiero Galicia SA | GGAL.BA | 1.1 | 5.5 | 0.0 | 38.8 | 42.1 | 9.9 | 18.3 | 3.4 | 18.4 | 1,193.5 | 1,079.9 | 90.5 | 5,646.6 | 460.4 | 18,928.4 | 15,447.2 | 3,481.2 |
| Banco Macro SA | BMA.BA | 1.3 | 0.0 | 0.0 | 17.4 | 20.2 | 10.7 | 15.8 | 3.7 | 23.4 | 628.2 | 509.9 | 81.2 | 3,844.6 | 333.4 | 12,389.6 | 9,495.8 | 2,893.8 |
| Banco Bbva Argentina SA | BBAR.BA | 1.5 | 0.0 | 0.0 | 30.1 | 32.6 | 16.4 | 20.8 | 3.7 | 17.8 | 612.7 | 207.7 | 33.9 | 4,241.4 | 319.3 | 12,206.1 | 10,030.1 | 2,176.0 |
| Bolsas y Mercados Argentinos SA | BYMA.BA | 21.5 | 1.5 | 63.1 | 44.7 | 50.2 | 68.0 | 18.0 | 5.1 | 28.4 | 762.5 | 526.1 | 69.0 | 69.4 | 47.2 | 1,298.6 | 929.6 | 369.0 |
| Banco Patagonia SA | BPAT.BA | 0.7 | 0.0 | 0.0 | 18.5 | 20.3 | 9.1 | 16.2 | 2.7 | 16.8 | 696.4 | 114.5 | 16.4 | 2,396.5 | 109.8 | 5,653.3 | 4,704.7 | 948.7 |
| Grupo Supervielle SA | SUPV.BA | 0.7 | 0.1 | 0.0 | 6.9 | 13.5 | 2.4 | 4.7 | 0.7 | 14.2 | 395.0 | 296.3 | 75.0 | 1,577.0 | 19.7 | 4,025.3 | 3,454.8 | 570.5 |
| Banco Hipotecario SA | BHIP.BA | 0.2 | 0.0 | 0.0 | 19.0 | 20.8 | 8.9 | 19.4 | 2.4 | 12.3 | 703.5 | 703.5 | 100.0 | 642.0 | 43.9 | 2,618.0 | 2,295.2 | 322.9 |
| Grupo Financiero Valores | VALO.BA | 2.9 | 0.7 | 98.1 | 56.6 | 57.3 | 6.1 | 11.8 | 1.0 | 8.8 | 858.5 | 858.5 | 100.0 | 150.8 | 9.2 | 1,182.5 | 1,077.9 | 104.6 |
| ENTRETENIMIENTO | | | | | | | | | | | | | | | | | | |
| Boldt SA | BOLT.BA | 0.0 | 0.0 | 0.0 | 0.0 | 0.0 | 0.0 | 0.0 | 0.0 | 59.1 | 3,000.0 | 3,000.0 | 100.0 | 0.0 | 0.0 | 128.1 | 52.4 | 75.7 |
| CONSUMO MINORISTA | | | | | | | | | | | | | | | | | | |
| Mirgor SACIFIA | MIRG.BA | 0.3 | 0.1 | 22.1 | 8.4 | 9.9 | 2.0 | 14.3 | 4.5 | 31.2 | 14.9 | 14.9 | 100.0 | 1,986.4 | 39.4 | 1,251.6 | 860.6 | 391.0 |
| Laboratorios Richmond SACIF | RICH.BA | 0.4 | 0.3 | 51.5 | 12.2 | 18.1 | -8.6 | -14.6 | -3.6 | 24.4 | 14.2 | 14.2 | 100.0 | 74.3 | -6.3 | 229.5 | 173.5 | 56.0 |
| Domec | DOME.BA | 0.7 | 0.0 | 13.1 | -8.0 | -7.4 | -5.7 | -12.4 | -8.3 | 67.0 | 100.0 | 5.0 | - | 10.1 | -0.6 | 9.2 | 3.0 | 6.1 |
| Havanna Holding SA | HAVA.BA | 1.6 | 1.2 | 59.8 | 24.9 | 29.1 | 16.7 | 48.6 | 25.6 | 52.7 | 12.8 | 12.8 | 100.0 | 71.6 | 11.5 | 64.4 | 30.5 | 34.0 |
| MEDIOS | | | | | | | | | | | | | | | | | | |
| Cablevision Holding SA | CVH.BA | 0.3 | 0.0 | 82.3 | -5.7 | 28.3 | -18.0 | -25.6 | -4.7 | 18.4 | 121.1 | 121.1 | 100.0 | 3,598.4 | -389.1 | 9,876.1 | 8,057.9 | 1,818.2 |
| Grupo Clarin SA | GCLA.BA | 0.5 | 0.0 | 36.9 | 8.8 | 13.1 | -0.7 | -1.2 | -0.7 | 59.6 | 69.2 | 69.2 | 100.0 | 379.6 | -2.1 | 408.4 | 165.1 | 243.3 |
| PAPEL Y CELULOSA | | | | | | | | | | | | | | | | | | |
| Celulosa Argentina SA | CELU.BA | 0.5 | 0.0 | 20.7 | 11.7 | 17.9 | 10.3 | 59.7 | 14.3 | 24.0 | 100.9 | 100.9 | 100.0 | 363.7 | 37.4 | 352.2 | 267.6 | 84.5 |
| PETRÓLEO Y GAS | | | | | | | | | | | | | | | | | | |
| YPF SA | YPFD.BA | 1.1 | 0.0 | 22.1 | 6.8 | 25.1 | 9.2 | 15.0 | 6.2 | 41.2 | 393.3 | 192.7 | 49.0 | 13,312.7 | 1,175.1 | 26,983.5 | 15,854.7 | 11,128.8 |
| Sociedad Comercial del Plata SA | COME.BA | 2.4 | 2.5 | 15.9 | 7.4 | 11.3 | 9.8 | 13.1 | 10.0 | 76.1 | 3,147.6 | 2,547.1 | 100.0 | 425.9 | 41.8 | 577.9 | 138.2 | 439.8 |



| Empresa | TICKER | P/S Trail. 12m | Div Yield (%) | Marg. Bruto (%) | Marg. EBIT (%) | Marg. EBITDA (%) | Marg. Neto (%) | ROE (%) | ROA (%) | PN/A (%) | Acciones en Circulación (en M) | Free Float (en M) | Free Float (en %) | Ventas netas (en M de USD) | Res. Neto (en M de USD) | Activo (en M de USD) | Pasivo (en M de USD) | PN (en M de USD) |
|-----------------------------------|----------|----------------------|---------------------|-----------------------|----------------------|------------------------|----------------------|------------|------------|-------------|--------------------------------------|-------------------------|-------------------------|-------------------------------|-------------------------------|----------------------------|----------------------------|------------------------|
| REAL ESTATE Y CONSTRUCCIÓN | | | | | | | | | | | | | | | | | | |
| Loma Negra | LOMA.BA | 3.4 | 2.7 | 25.1 | 17.9 | 27.2 | 4.2 | 6.6 | 3.0 | 45.8 | 596.0 | 261.6 | 43.9 | 731.7 | 31.5 | 1,243.8 | 673.7 | 570.1 |
| IRSA | IRSA.BA | 6.2 | 14.1 | 65.5 | 34.9 | 37.0 | 65.1 | 16.3 | 8.3 | 50.9 | 736.4 | 307.8 | 41.8 | 347.8 | 223.4 | 2,772.2 | 1,361.7 | 1,410.4 |
| Holcim Argentina SA | HARG.BA | 2.4 | 7.3 | 36.7 | 17.6 | 24.4 | 16.9 | 23.7 | 16.3 | 68.8 | 365.7 | 63.9 | 17.5 | 413.8 | 69.8 | 589.5 | 183.7 | 405.8 |
| SIDERO-METALURGIA | | | | | | | | | | | | | | | | | | |
| Aluar Aluminio Argentino SAIC | ALUA.BA | 7.2 | 1.3 | 17.2 | 9.6 | 16.0 | 21.5 | 26.9 | 15.4 | 57.4 | 2,800.0 | 1,512.6 | 54.0 | 1,269.2 | 268.5 | 1,787.9 | 762.3 | 1,025.6 |
| Ternium Argentina SA | TXAR.BA | 5.5 | 0.0 | 32.8 | 24.1 | 27.3 | 18.4 | 13.3 | 12.0 | 90.2 | 4,517.1 | 1,690.7 | 37.4 | 2,549.4 | 470.2 | 5,208.2 | 511.8 | 4,696.4 |
| TELECOMUNICACIONES | | | | | | | | | | | | | | | | | | |
| Telecom Argentina SA | TECO2.BA | 0.6 | 0.0 | 72.8 | -5.6 | 28.4 | -22.2 | -21.7 | -10.2 | 46.9 | 628.1 | 382.0 | 60.8 | 3,598.4 | -810.8 | 9,862.8 | 5,241.5 | 4,621.4 |
| UTILITIES ELECTRICIDAD | | | | | | | | | | | | | | | | | | |
| Pampa Energia SA | PAMP.BA | 5.5 | 0.0 | 38.3 | 31.7 | 44.3 | 34.3 | 25.1 | 12.6 | 50.1 | 1,386.4 | 1,079.2 | 77.8 | 1,312.5 | 449.9 | 5,201.7 | 2,594.1 | 2,607.6 |
| Central Puerto SA | CEPU.BA | 6.4 | 0.5 | 0.0 | 28.2 | 51.4 | 10.9 | 4.9 | 3.4 | 69.8 | 1,514.0 | 980.8 | 64.8 | 493.8 | 55.5 | 2,223.4 | 671.2 | 1,552.2 |
| Edenor | EDN.BA | 0.8 | 0.0 | 0.0 | -16.6 | -4.0 | -7.2 | -15.4 | -3.5 | 22.7 | 442.2 | 442.2 | 100.0 | 1,087.8 | -78.8 | 2,951.0 | 2,280.1 | 670.9 |
| Enel Generacion Costanera | CECO2.BA | 10.9 | 0.0 | -0.5 | -3.4 | 49.2 | -16.9 | -8.7 | -6.8 | 78.1 | 702.0 | 702.0 | 100.0 | 81.5 | -13.8 | 273.5 | 59.8 | 213.7 |
| Transener | TRAN.BA | 2.1 | 0.0 | 28.8 | 21.1 | 36.6 | 14.8 | 8.4 | 6.3 | 75.0 | 217.9 | 217.9 | 100.0 | 202.5 | 29.9 | 659.7 | 165.0 | 494.7 |
| EDESAL Holding SA | EDLH.BA | 0.0 | 0.0 | 0.0 | -15.4 | -6.5 | -3.3 | -7.3 | -3.2 | 44.3 | 74.6 | 16.1 | 21.5 | 108.9 | -3.6 | 140.6 | 78.3 | 62.3 |
| UTILITIES GAS | | | | | | | | | | | | | | | | | | |
| Transportadora de Gas del Sur | TGSU2.BA | 3.8 | 0.0 | 37.9 | 27.6 | 41.5 | 16.6 | 10.6 | 6.9 | 65.0 | 379.4 | 379.4 | 100.0 | 750.1 | 124.2 | 2,527.5 | 884.4 | 1,643.0 |
| Naturgy BAN SA | GBAN.BA | 0.8 | 0.0 | 0.0 | 4.6 | 7.0 | 5.8 | 14.0 | 8.7 | 62.1 | 159.5 | 159.5 | 100.0 | 310.8 | 18.0 | 294.4 | 111.6 | 182.8 |
| Camuzzi Gas Pampeana SA | CGPA2.BA | 2.1 | 0.0 | 17.0 | -2.3 | 0.5 | 0.0 | 0.2 | 0.1 | 33.7 | 132.9 | 132.9 | 100.0 | 285.3 | 0.1 | 262.3 | 173.9 | 88.4 |
| MetroGAS SA | METR.BA | 0.5 | 0.0 | 0.0 | 0.6 | 6.8 | 30.0 | 65.6 | 27.2 | 41.5 | 278.9 | 278.9 | 100.0 | 525.9 | 157.0 | 910.1 | 532.7 | 377.4 |
| Transportadora de Gas del Norte | TGNO4.BA | 1.5 | 0.0 | 10.7 | -13.4 | 36.3 | 25.3 | 8.4 | 6.5 | 77.3 | 87.9 | 87.9 | 100.0 | 192.8 | 48.7 | 1,046.1 | 237.5 | 808.5 |
| Distribuidora de Gas Cuyana SA | DGCU2.BA | 1.3 | 0.0 | 17.9 | -1.1 | 8.3 | -6.0 | -6.1 | -4.0 | 65.4 | 97.9 | 97.9 | 100.0 | 121.8 | -7.3 | 246.7 | 85.4 | 161.3 |



ARGENTINA

Precios de Acciones ADRs en el exterior

| Empresa | TICKER | Precio (Exterior) | Capitalización Bursátil USD M | Valor Nominal | Variación Porcentual | | | | | Acum. 2023 | 12 meses | Factor |
|-----------------------------------|---------|----------------------|-------------------------------------|------------------|----------------------|-----------------|-----------|--------------|----------|---------------|-------------|--------|
| | | | | | 1 día | En la semana | 5 días | En el mes | 1 mes | | | |
| AGROBUSINESS | | | | | | | | | | | | |
| Adecoagro SA | AGRO.K | 10.77 | 1,154.44 | 1.50 | 0.4 | -7.9 | -7.9 | -7.9 | -5.6 | 29.9 | 26.0 | 2 |
| Bioceres Crop Solutions Corp | BIOX.O | 10.49 | 658.74 | 0.0001 | 1.2 | -7.1 | -7.1 | -7.1 | -9.2 | -12.8 | -20.2 | |
| Cresud SACIF y A | CRESY.O | 6.61 | 1,084.13 | 1 | 1.7 | -1.2 | -1.2 | -1.2 | -8.4 | 6.3 | 30.3 | 10 |
| BANCOS Y FINANCIERAS | | | | | | | | | | | | |
| Grupo Financiero Galicia SA | GGAL.O | 12.77 | 3,767.27 | 1 | 0.7 | -2.1 | -2.1 | -2.1 | -22.3 | 42.2 | 78.1 | 10 |
| Banco Macro SA | BMA.N | 18.97 | 2,955.00 | 1 | 0.4 | -3.9 | -3.9 | -3.9 | -20.5 | 26.7 | 38.8 | 10 |
| Banco Bbva Argentina SA | BBAR.N | 4.28 | 2,096.96 | 3 | 1.2 | 3.1 | 3.1 | 3.1 | -18.7 | 15.9 | 43.7 | 3 |
| Grupo Supervielle SA | SUPV.N | 2.07 | 408.75 | 0.002 | 1.5 | -6.8 | -6.8 | -6.8 | -26.1 | -4.2 | 10.1 | 5 |
| CONSUMO | | | | | | | | | | | | |
| Corporacion America Airports | CAAP.N | 12.61 | 2,058.24 | 1 | 1.3 | -5.5 | -5.5 | -5.5 | -9.4 | 44.4 | 77.1 | |
| Despegar.com | DESP.N | 6.88 | 454.47 | - | 1.8 | -5.1 | -5.1 | -5.1 | -13.8 | 34.1 | 3.8 | |
| PETRÓLEO Y GAS | | | | | | | | | | | | |
| Tenaris SA | TS.N | 31.06 | 18,283.42 | 1 | 1.9 | -1.7 | -1.7 | -1.7 | -3.1 | -11.7 | 6.5 | |
| YPF SA | YPF.N | 11.40 | 11,185.63 | - | -0.8 | -6.9 | -6.9 | -6.9 | -15.4 | 24.0 | 58.1 | 1 |
| Vista Oil & Gas | VIST.K | 29.71 | 2,605.47 | - | 2.0 | -2.2 | -2.2 | -2.2 | 14.8 | 89.7 | 149.7 | |
| REAL ESTATE Y CONSTRUCCIÓN | | | | | | | | | | | | |
| Ternium SA | TX.N | 36.62 | 7,188.79 | 10 | 1.2 | -8.2 | -8.2 | -8.2 | -12.8 | 19.8 | 27.9 | 10 |
| Loma Negra | LOMA.K | 6.13 | 1,801.41 | 5 | 1.5 | 1.7 | 1.7 | 1.7 | 2.2 | -4.5 | -3.0 | 5 |
| IRSA | IRS.N | 6.78 | 1,584.53 | 1 | 3.4 | 5.0 | 5.0 | 5.0 | -8.4 | 41.3 | 62.4 | 10 |
| TELECOMUNICACIONES | | | | | | | | | | | | |
| Telecom Argentina SA | TEO.N | 4.88 | 1,604.33 | 1 | 0.4 | 1.9 | 1.9 | 1.9 | -7.6 | -5.9 | 19.5 | 5 |
| TECNOLOGÍA | | | | | | | | | | | | |
| MercadoLibre Inc | MELI.O | 1,237.53 | 61,991.18 | 0.01 | 1.9 | -2.4 | -2.4 | -2.4 | -13.2 | 46.2 | 33.2 | |
| Globant SA | GLOB.K | 201.68 | 8,558.23 | 1.2 | 2.0 | 1.9 | 1.9 | 1.9 | -0.8 | 19.9 | 6.0 | |
| UTILITIES ELECTRICIDAD | | | | | | | | | | | | |
| Pampa Energia SA | PAM.N | 37.54 | 5,293.30 | 25 | 1.6 | 0.5 | 0.5 | 0.5 | -12.5 | 17.5 | 54.9 | 25 |
| Central Puerto SA | CEPU.N | 5.83 | 2,321.64 | 10 | 2.8 | 0.2 | 0.2 | 0.2 | -11.8 | -1.9 | 30.1 | 10 |
| Edenor | EDN.N | 12.04 | 659.12 | - | 8.6 | 0.3 | 0.3 | 0.3 | -5.5 | 50.7 | 80.2 | 20 |
| UTILITIES GAS | | | | | | | | | | | | |
| Transportadora de Gas del Sur | TGS.N | 10.76 | 2,068.99 | 5 | 1.7 | 5.7 | 5.7 | 5.7 | -7.8 | -8.8 | 29.8 | 5 |



ARGENTINA

Precios de CEDEARS en BYMA

| Empresa | TICKER | Precio (Local) | Capitalización Bursátil USD M (al CCL) | Variación Porcentual | | | | | | | País de Origen |
|------------------------------------|---------|-------------------|--|----------------------|-----------------|-----------|--------------|----------|---------------|-------------|----------------|
| | | | | 1 día | En la semana | 5 días | En el mes | 1 mes | Acum. 2023 | 12 meses | |
| MATERIALES BÁSICOS | | | | | | | | | | | |
| Bioceres Crop Solutions Corp | BIOX.BA | 18,070.00 | 268.62 | -4.8 | -2.2 | -2.2 | -2.2 | 2.7 | 118.0 | 123.5 | Argentina |
| Dupont De Nemours Inc | DD.BA | 13,008.50 | 14,095.77 | -3.1 | 5.4 | 5.4 | 5.4 | 12.3 | 177.9 | 294.4 | EE.UU. |
| Barrick Gold Corp | GOLD.BA | 12,541.50 | 10,453.86 | -2.1 | 4.9 | 4.9 | 4.9 | 4.1 | 114.7 | 156.7 | Canadá |
| Aluminum Corporation of China Ltd | ACH.BA | 3rd could not t | 5,541.32 | 0.0 | -1.0 | -1.0 | -1.0 | 85.5 | 403.1 | 345.9 | China |
| Yamana Gold Inc | AUY.BA | 3rd could not t | 1,384.21 | 0.0 | 0.0 | 0.0 | -6.4 | -5.0 | 17.4 | 82.9 | Canadá |
| BHP Group Ltd | BHP.BA | 24,763.50 | 58,089.44 | -2.9 | 5.5 | 5.5 | 5.5 | 12.5 | 145.7 | 221.5 | Australia |
| Coeur Mining Inc | CDE.BA | 1,905.00 | 316.83 | 3.8 | 5.3 | 5.3 | 5.3 | 8.5 | 64.5 | 62.2 | EE.UU. |
| Freeport-McMoRan Inc | FCX.BA | 10,691.00 | 21,437.44 | 2.3 | 3.7 | 3.7 | 3.7 | 4.4 | 151.2 | 253.6 | EE.UU. |
| Harmony Gold Mining Company Ltd | HMY.BA | 3,325.50 | 947.24 | -1.4 | 7.1 | 7.1 | 7.1 | 4.2 | 187.2 | 280.9 | Sudáfrica |
| Newmont Corporation | NEM.BA | 10,858.00 | 12,250.98 | -2.2 | 6.5 | 6.5 | 6.5 | 11.7 | 110.5 | 141.3 | EE.UU. |
| Rio Tinto PLC | RIO.BA | 13,396.50 | 42,082.74 | -6.1 | 2.3 | 2.3 | 2.3 | 11.3 | 128.4 | 213.9 | Reino Unido |
| Southern Copper Corp | SCCO.BA | 32,000.00 | 23,306.88 | -3.6 | 3.4 | 3.4 | 3.4 | 5.4 | 220.6 | 346.8 | EE.UU. |
| Ternium SA | TXR.BA | 15,958.00 | 2,931.43 | -3.6 | -3.0 | -3.0 | -3.0 | -0.3 | 210.5 | 276.2 | Luxembourg |
| Vale SA | VALE.BA | 5,608.50 | 24,049.50 | -1.6 | 1.7 | 1.7 | 1.7 | 8.4 | 98.9 | 158.9 | Brasil |
| United States Steel Corp | X.BA | 9,555.50 | 3,006.71 | -4.2 | 7.1 | 7.1 | 7.1 | 21.0 | 235.0 | 375.9 | EE.UU. |
| Avery Dennison Corp | AVY.BA | 8,811.50 | 6,039.64 | -8.0 | 5.8 | 5.8 | 5.8 | 14.0 | 159 | 2,581.4 | EE.UU. |
| CONSUMO DISCRECIONAL | | | | | | | | | | | |
| Despegar.com Corp | DESP.BA | 5,909.50 | 185.32 | -2.0 | -0.3 | -0.3 | -0.3 | -2.8 | 239.2 | 194.0 | Argentina |
| Amazon.com Inc | AMZN.BA | 771.50 | 538,372.10 | -0.4 | 5.5 | 5.5 | 5.5 | 7.8 | 287.7 | 200.2 | EE.UU. |
| Arcos Dorados Holdings Inc | ARCO.BA | 15,370.50 | 766.23 | -6.7 | -1.6 | -1.6 | -1.6 | 4.8 | 174.3 | 226.3 | Uruguay |
| Walt Disney Co | DISN.BA | 5,967.00 | 61,885.07 | -1.3 | 7.5 | 7.5 | 7.5 | 15.9 | 141.7 | 132.5 | EE.UU. |
| Home Depot Inc | HD.BA | 7,939.00 | 119,413.29 | -5.5 | 2.4 | 2.4 | 2.4 | 2.0 | 240.1 | 309.0 | EE.UU. |
| Honda Motor Co Ltd | HMC.BA | 28,552.00 | 24,019.30 | 0.8 | 3.8 | 3.8 | 3.8 | 12.7 | 263.1 | 312.6 | Japón |
| McDonald's Corp | MCD.BA | 8,927.50 | 73,764.37 | -13.0 | -0.9 | -0.9 | -0.9 | 2.0 | 137.9 | 200.7 | EE.UU. |
| Nike Inc | NKE.BA | 7,016.00 | 60,266.54 | -5.0 | 6.8 | 6.8 | 6.8 | 10.4 | 110.7 | 206.0 | EE.UU. |
| Target Corp | TGT.BA | 3,802.00 | 19,766.28 | -5.8 | 0.0 | 0.0 | 0.0 | -2.9 | 81.2 | 92.1 | EE.UU. |
| Tripadvisor Inc | TRIP.BA | 7,009.50 | 898.61 | -1.4 | 2.8 | 2.8 | 2.8 | 17.7 | 127.6 | 99.3 | EE.UU. |
| Tesla Inc | TLA.BA | 15,005.50 | 337,199.70 | -3.0 | 9.4 | 9.4 | 9.4 | 17.4 | 433.3 | 208.1 | EE.UU. |
| Grupo Televisa SAB | TV.BA | 842.00 | 662.05 | -5.2 | 0.2 | 0.2 | 0.2 | -16.6 | 62.3 | 54.7 | México |
| CONSUMO NO DISCRECIONAL | | | | | | | | | | | |
| Kimberly-Clark Corp | KMB.BA | 17,337.50 | 16,384.41 | -5.3 | 5.2 | 5.2 | 5.2 | 6.3 | 129.1 | 204.7 | EE.UU. |
| Walmart Inc | WMT.BA | 22,446.50 | 171,669.24 | -5.0 | 2.5 | 2.5 | 2.5 | 9.4 | 179.1 | 234.2 | EE.UU. |
| Adecoagro SA | ADGO.BA | 18,537.50 | 470.75 | -6.9 | -2.9 | -2.9 | -2.9 | 7.2 | 230.1 | 258.1 | Luxembourg |
| Bunge Ltd | BNG.BA | 18,055.00 | 6,334.52 | -8.4 | 1.2 | 1.2 | 1.2 | 7.5 | 169.3 | 244.8 | EE.UU. |
| Diageo PLC | DEO.BA | 22,121.00 | 34,041.13 | 0.6 | 8.0 | 8.0 | 8.0 | 9.0 | 124.2 | 158.5 | EE.UU. |
| Coca-Cola Co | KO.BA | 9,163.00 | 93,705.51 | -2.1 | -0.5 | -0.5 | -0.5 | 2.9 | 111.7 | 175.0 | EE.UU. |
| Altria Group Inc | MO.BA | 9,072.00 | 30,443.79 | -10.2 | 5.0 | 5.0 | 5.0 | 10.3 | 137.5 | 186.3 | EE.UU. |
| PepsiCo Inc | PEP.BA | 23,093.00 | 89,976.97 | -13.4 | -0.5 | -0.5 | -0.5 | 4.0 | 125.1 | 180.3 | EE.UU. |
| Procter & Gamble Co | PG.BA | 24,954.00 | 138,483.21 | -2.6 | 4.0 | 4.0 | 4.0 | 7.9 | 142.1 | 225.7 | EE.UU. |
| Ambev SA | ABEV.BA | 6,611.50 | 16,466.82 | -3.0 | 3.4 | 3.4 | 3.4 | 4.1 | 132.6 | 143.5 | Brasil |
| Berkshire Hathaway Inc | BRKB.BA | 13,571.50 | 308,004.38 | -3.3 | 3.6 | 3.6 | 3.6 | 8.3 | 181.0 | 251.5 | EE.UU. |
| General Electric Co | GE.BA | 12,040.50 | 49,472.19 | -3.4 | 5.7 | 5.7 | 5.7 | 12.2 | 242.8 | 372.9 | EE.UU. |
| Honeywell International Inc | HON.BA | 20,007.00 | 49,996.43 | 2.1 | 5.1 | 5.1 | 5.1 | 14.0 | 122.8 | 200.1 | EE.UU. |
| 3M Co | MMM.BA | 15,250.50 | 19,897.97 | -5.6 | -1.1 | -1.1 | -1.1 | -6.0 | 87.3 | 127.4 | EE.UU. |
| ENERGÍA | | | | | | | | | | | |
| Vista Energy SAB de CV | VIST.BA | 25,627.50 | N.D. | -1.4 | 3.4 | 3.4 | 3.4 | 30.0 | 379.1 | 602.4 | Argentina |
| BP PLC | BP.BA | 6,383.00 | 43,132.58 | -1.8 | 0.5 | 0.5 | 0.5 | 8.3 | 173.3 | 239.9 | Reino Unido |
| Chevron Corp | CVX.BA | 17,544.00 | 126,194.76 | -11.0 | 1.0 | 1.0 | 1.0 | 10.7 | 130.4 | 188.1 | EE.UU. |
| Gazprom PAO | OGZD.BA | 348.00 | 15,881.24 | N.D. | N.D. | N.D. | N.D. | N.D. | N.D. | N.D. | Rusia |
| Petroleo Brasileiro SA Petrobras | PBR.BA | 12,077.50 | 36,327.00 | -1.7 | -2.2 | -2.2 | -2.2 | 6.4 | 263.4 | 214.1 | Brasil |
| PetroChina Co Ltd | PTR.BA | 3,443.50 | 77,732.05 | 0.0 | 0.0 | 0.0 | 0.0 | 0.0 | 0.0 | 0.0 | China |
| Schlumberger NV | SLB.BA | 16,060.00 | 32,279.69 | -7.0 | 0.3 | 0.3 | 0.3 | 3.5 | 166.5 | 270.4 | EE.UU. |
| Exxon Mobil Corp | XOM.BA | 18,562.00 | 174,945.60 | -4.4 | -4.2 | -4.2 | -4.2 | 6.5 | 148.4 | 201.5 | EE.UU. |
| Tenaris SA | TEN.BA | 26,715.00 | 7,455.57 | 2.0 | 2.9 | 2.9 | 2.9 | 9.4 | 124.4 | 203.2 | Luxembourg |
| FINANZAS | | | | | | | | | | | |
| American International Group Inc | AIG.BA | 10,550.50 | 17,670.36 | -8.3 | 5.9 | 5.9 | 5.9 | 17.5 | 146.0 | 243.1 | EE.UU. |
| American Express Co | AXP.BA | 8,581.50 | 44,842.49 | -1.6 | 5.0 | 5.0 | 5.0 | 6.9 | 154.9 | 196.3 | EE.UU. |
| Bank of America Corp | BAC.BA | 11,290.50 | 84,475.97 | -3.6 | 0.3 | 0.3 | 0.3 | 4.3 | 102.6 | 137.8 | EE.UU. |
| Banco Bradesco SA | BBD.BA | 2,431.00 | 11,430.30 | -2.8 | 4.0 | 4.0 | 4.0 | 10.6 | 153.8 | 103.7 | Brasil |
| Banco Bilbao Vizcaya Argentaria SA | BBV.BA | 6,938.50 | 19,766.82 | -10.8 | 4.6 | 4.6 | 4.6 | 21.6 | 243.4 | 399.6 | España |
| Banco Santander Brasil SA | BSBR.BA | 4,590.50 | 8,055.79 | -5.4 | 8.0 | 8.0 | 8.0 | 13.4 | 155.6 | 146.2 | Brasil |
| Citigroup Inc | C.BA | 11,663.50 | 31,857.92 | -0.5 | 3.6 | 3.6 | 3.6 | 11.2 | 129.3 | 168.9 | EE.UU. |
| Goldman Sachs Group Inc | GS.BA | 21,004.50 | 42,007.45 | 2.1 | 2.4 | 2.4 | 2.4 | 11.3 | 134.1 | 195.1 | EE.UU. |
| HSBC Holdings PLC | HSBC.BA | 17,741.50 | 63,772.46 | 1.0 | 9.1 | 9.1 | 9.1 | 25.9 | 252.9 | 347.8 | Reino Unido |
| ING Groep NV | ING.BA | 4,019.50 | 19,840.28 | 4.5 | 11.7 | 11.7 | 11.7 | 14.0 | 201.2 | 338.7 | Países Bajos |
| Itau Unibanco Holding SA | ITUB.BA | 4,663.00 | 19,987.08 | 0.4 | 5.5 | 5.5 | 5.5 | 15.7 | 198.2 | 180.0 | Brasil |
| JPMorgan Chase & Co | JPM.BA | 25,156.00 | 171,948.76 | -1.4 | 5.7 | 5.7 | 5.7 | 14.2 | 177.3 | 284.8 | EE.UU. |
| Lloyds Banking Group PLC | LYG.BA | 902.50 | 13,464.31 | -1.9 | 3.8 | 3.8 | 3.8 | 15.4 | 148.8 | 216.7 | Reino Unido |
| Wells Fargo & Co | WFC.BA | 6,864.00 | 59,216.27 | 0.1 | 1.8 | 1.8 | 1.8 | 9.9 | 145.2 | 168.2 | EE.UU. |



ARGENTINA

Precios de CEDEARS en BYMA

| Empresa | TICKER | Precio (Local) | Capitalización Bursátil USD M (al CCL) | Variación Porcentual | | | | | | | País de Origen |
|--------------------------------------|----------|-----------------|--|----------------------|--------------|--------|-----------|-------|------------|----------|----------------|
| | | | | 1 día | En la semana | 5 días | En el mes | 1 mes | Acum. 2023 | 12 meses | |
| SALUD | | | | | | | | | | | |
| Abbott Laboratories | ABT.BA | 21,046.00 | 68,556.16 | -5.5 | 5.8 | 5.8 | 5.8 | 8.4 | 125.3 | 170.3 | EE.UU. |
| AstraZeneca PLC | AZN.BA | 29,133.50 | 84,300.76 | -6.4 | 4.2 | 4.2 | 4.2 | 14.2 | 156.0 | 250.2 | Reino Unido |
| Biogen Inc | BIIB.BA | 17,986.00 | 15,546.41 | 0.3 | 10.0 | 10.0 | 10.0 | 16.0 | 151.2 | 190.7 | EE.UU. |
| Bristol-Myers Squibb Co | BMY.BA | 16,451.00 | 48,268.04 | -1.8 | 3.9 | 3.9 | 3.9 | 9.0 | 102.9 | 133.1 | EE.UU. |
| Gilead Sciences Inc | GILD.BA | 16,216.50 | 37,975.14 | -15.1 | 4.6 | 4.6 | 4.6 | 16.0 | 123.2 | 231.9 | EE.UU. |
| GSK plc | GSK.BA | 7,884.50 | 30,521.34 | -5.7 | 5.8 | 5.8 | 5.8 | 20.8 | 168.9 | 247.0 | Reino Unido |
| Johnson & Johnson | JNJ.BA | 9,064.00 | 154,792.08 | -3.1 | 5.9 | 5.9 | 5.9 | 12.9 | 126.7 | 176.9 | EE.UU. |
| Eli Lilly and Co | LLY.BA | 80,090.50 | 218,797.36 | 14.2 | 43.7 | 43.7 | 43.7 | 51.1 | 415.4 | 529.0 | EE.UU. |
| Merck & Co Inc | MRK.BA | 18,001.00 | 107,489.22 | -6.7 | 6.0 | 6.0 | 6.0 | 11.5 | 140.5 | 239.0 | EE.UU. |
| Novartis AG | NVS.BA | 21,286.00 | 90,206.48 | -4.5 | 3.1 | 3.1 | 3.1 | 16.7 | 186.5 | 282.4 | Suiza |
| Pfizer Inc | PFE.BA | 14,306.50 | 76,275.05 | -5.0 | 4.6 | 4.6 | 4.6 | 9.2 | 65.7 | 119.9 | EE.UU. |
| Thermo Fisher Scientific Inc | TMO.BA | 19,634.50 | 78,462.62 | -4.4 | 3.3 | 3.3 | 3.3 | 5.2 | 132.2 | 160.8 | EE.UU. |
| INDUSTRIA | | | | | | | | | | | |
| Boeing Co | BA.BA | 27,243.50 | 46,090.39 | -3.1 | 3.9 | 3.9 | 3.9 | -1.5 | 152.9 | 301.3 | EE.UU. |
| Caterpillar Inc | CAT.BA | 11,491.00 | 55,342.94 | -12.3 | 2.1 | 2.1 | 2.1 | 6.6 | 182.5 | 322.1 | EE.UU. |
| Deere & Co | DE.BA | 8,189.00 | 44,455.80 | -3.5 | 5.4 | 5.4 | 5.4 | 4.6 | 125.9 | 200.9 | EE.UU. |
| Embraer SA | ERJ.BA | 11,400.00 | 981.11 | -0.9 | 0.4 | 0.4 | 0.4 | -3.2 | 206.3 | 275.6 | Brasil |
| Lockheed Martin Corp | LMT.BA | 17,510.00 | 41,151.45 | -5.2 | 3.5 | 3.5 | 3.5 | 8.3 | 113.9 | 188.4 | EE.UU. |
| Snap-On Inc | SNA.BA | 37,572.00 | 5,604.07 | -1.1 | 7.7 | 7.7 | 7.7 | 12.7 | 195.4 | 246.0 | EE.UU. |
| Block Inc | SQ.BA | 1,900.50 | 10,903.82 | -2.0 | 4.4 | 4.4 | 4.4 | -13.2 | 77.1 | 101.1 | EE.UU. |
| TECNOLOGÍA | | | | | | | | | | | |
| Cisco Systems Inc | CSCO.BA | 9,313.50 | 88,378.50 | -5.0 | 5.2 | 5.2 | 5.2 | 6.9 | 188.7 | 270.0 | EE.UU. |
| Spotify Technology SA | SPOT.BA | 4,993.00 | 12,743.60 | -4.2 | 9.1 | 9.1 | 9.1 | 14.8 | 418.2 | 391.7 | Luxembourg |
| Alibaba Group Holding Ltd | BABA.BA | 8,232.50 | 89,257.23 | -0.8 | 3.9 | 3.9 | 3.9 | 2.8 | 146.4 | 186.4 | China |
| Yelp Inc | YELP.BA | 18,221.00 | 1,185.24 | 3.6 | 6.9 | 6.9 | 6.9 | 8.2 | 306.0 | 223.8 | EE.UU. |
| Netflix Inc | NFLX.BA | 20,537.50 | 68,940.87 | -0.9 | 5.6 | 5.6 | 5.6 | -3.1 | 223.6 | 347.3 | EE.UU. |
| Visa Inc | V.BA | 11,667.00 | 195,077.23 | 3.8 | 10.6 | 10.6 | 10.6 | 12.1 | 197.7 | 269.8 | EE.UU. |
| Apple Inc | AAPL.BA | 15,279.50 | 1,131,549.93 | -2.2 | 8.3 | 8.3 | 8.3 | 9.9 | 243.7 | 243.0 | EE.UU. |
| Adobe Inc | ADBE.BA | 20,723.50 | 97,783.99 | -3.8 | 8.1 | 8.1 | 8.1 | 6.4 | 296.6 | 398.1 | EE.UU. |
| Analog Devices Inc | ADI.BA | 9,995.50 | 35,350.92 | -4.8 | 3.4 | 3.4 | 3.4 | 7.9 | 168.3 | 225.6 | EE.UU. |
| Advanced Micro Devices Inc | AMD.BA | 9,273.00 | 70,653.41 | 0.3 | 9.7 | 9.7 | 9.7 | 11.7 | 320.0 | 343.3 | EE.UU. |
| America Movil SAB de CV | AMX.BA | 14,409.00 | 21,251.08 | -4.2 | 1.2 | 1.2 | 1.2 | 3.2 | 132.3 | 184.3 | México |
| Broadcom Inc | AVGO.BA | 18,794.50 | 142,260.86 | -4.9 | 6.9 | 6.9 | 6.9 | 10.8 | 290.9 | 405.8 | EE.UU. |
| Baidu Inc | BIDU.BA | 10,653.00 | 19,211.10 | 2.4 | 5.9 | 5.9 | 5.9 | 8.6 | 197.8 | 209.7 | China |
| Salesforce Inc | CRM.BA | 10,033.50 | 82,273.71 | -7.3 | 7.9 | 7.9 | 7.9 | 6.7 | 300.5 | 279.1 | EE.UU. |
| Telefonaktiebolaget LM Ericsson | ERIC.BA | 2,064.50 | 6,472.66 | -2.8 | 3.8 | 3.8 | 3.8 | 4.7 | 113.6 | 119.9 | Suecia |
| Meta Platforms Inc | FB.BA | ord could not t | 330,973.56 | -0.3 | 10.1 | 10.1 | 10.1 | 19.7 | 561.6 | 537.3 | EE.UU. |
| Globant SA | GLNT.BA | ord could not t | 3,489.86 | -2.3 | 6.9 | 6.9 | 6.9 | 12.4 | 202.7 | 196.9 | Luxembourg |
| Alphabet Inc | GOOGL.BA | 2,041.00 | 710,110.85 | -1.8 | 9.9 | 9.9 | 9.9 | 15.7 | 290.6 | 281.1 | EE.UU. |
| Garmin Ltd | GRMN.BA | 30,518.00 | 8,285.53 | -1.6 | 6.2 | 6.2 | 6.2 | 16.9 | 197.7 | 262.9 | Suiza |
| HP Inc | HPQ.BA | 22,677.50 | 10,437.54 | -4.8 | 7.1 | 7.1 | 7.1 | -1.5 | 156.3 | 182.0 | EE.UU. |
| International Business Machines Corp | IBM.BA | 24,555.50 | 52,762.42 | -0.2 | 6.4 | 6.4 | 6.4 | 8.9 | 158.2 | 234.9 | EE.UU. |
| Intel Corp | INTC.BA | 6,205.50 | 61,804.28 | -3.1 | 6.0 | 6.0 | 6.0 | 10.5 | 248.1 | 275.0 | EE.UU. |
| MercadoLibre Inc | MELI.BA | 17,556.50 | 25,278.61 | -2.8 | 1.0 | 1.0 | 1.0 | -2.9 | 263.1 | 268.4 | Argentina |
| Microsoft Corp | MSFT.BA | 9,363.00 | 991,496.55 | -1.8 | 7.5 | 7.5 | 7.5 | 10.9 | 243.7 | 272.0 | EE.UU. |
| Nokia Oyj | NOKA.BA | 3,097.00 | 8,305.91 | -6.3 | -0.5 | -0.5 | -0.5 | 1.5 | 96.7 | 127.8 | Finlandia |
| NVIDIA Corp | NVDA.BA | 16,444.00 | 460,919.66 | -1.0 | 10.1 | 10.1 | 10.1 | 10.4 | 690.7 | 882.3 | EE.UU. |
| Oracle Corp | ORCL.BA | 31,717.50 | 122,831.47 | -2.4 | 9.7 | 9.7 | 9.7 | -0.3 | 241.4 | 372.9 | EE.UU. |
| PayPal Holdings Inc | PYPL.BA | 6,217.00 | 25,866.81 | -3.3 | 3.6 | 3.6 | 3.6 | 4.2 | 103.8 | 71.5 | EE.UU. |
| Qualcomm Inc | QCOM.BA | 8,665.50 | 43,273,842.80 | -2.2 | 4.2 | 4.2 | 4.2 | 9.2 | 156.6 | 150.6 | EE.UU. |
| Shopify Inc | SHOP.BA | 437.50 | 28,056.94 | -1.6 | 3.6 | 3.6 | 3.6 | -5.9 | 296.8 | 406.4 | Canadá |
| Snap Inc | SNAP.BA | 7,423.50 | 5,710.85 | -4.6 | 1.9 | 1.9 | 1.9 | 0.9 | 143.9 | 113.5 | EE.UU. |
| AT&T Inc | T.BA | 4,153.00 | 42,124.66 | -6.5 | 0.8 | 0.8 | 0.8 | 11.9 | 101.4 | 170.3 | EE.UU. |
| Twitter Inc | TWTR.BA | ord could not t | 7,460.22 | 0.0 | 0.0 | 0.0 | 0.0 | 8.5 | 82.7 | 45.7 | EE.UU. |
| Vodafone Group PLC | VOD.BA | 8,053.50 | 10,067.77 | -8.2 | 3.5 | 3.5 | 3.5 | 14.8 | 137.6 | 133.5 | EE.UU. |
| Verizon Communications Inc | VZ.BA | 13,295.50 | 52,886.56 | -9.1 | -0.3 | -0.3 | -0.3 | 1.9 | 101.0 | 134.2 | EE.UU. |
| Xerox Holdings Corp | XROX.BA | 13,324.50 | 966.18 | -3.5 | 2.2 | 2.2 | 2.2 | 3.5 | 176.3 | 205.6 | EE.UU. |
| Zoom Video Communications Inc | ZM.BA | 1,264.00 | 8,035.93 | -4.1 | 3.0 | 3.0 | 3.0 | 5.2 | 158.5 | 148.1 | EE.UU. |
| UTILITIES | | | | | | | | | | | |
| National Grid PLC | NGG.BA | 25,623.50 | 17,152.44 | -2.4 | 2.9 | 2.9 | 2.9 | 9.0 | 151.1 | 227.4 | Reino Unido |



TASAS y TIPOS DE CAMBIO

| Tipo de Cambio | Compra | Venta |
|---|--------|--------|
| BCRA Com. A3500 | 350.03 | |
| Minorista (Casas de Cambio) | 350.00 | 370.00 |
| Mayorista | 349.10 | 350.10 |
| BNA (Oficial) | 347.50 | 365.50 |
| Implícito (CCL) | 840.75 | 857.60 |
| Bolsa (MEP) | 819.85 | 820.01 |
| Ahorro/Tarjeta (Ofic + Imp PAIS + Perc Gcias) | 612.50 | 647.50 |
| Qatar (Ofic + Imp PAIS + Perc Gcias + BsPs) | 700.00 | 740.00 |
| Eventos (Ofic + Imp PAIS) | 453.83 | 455.13 |
| Importaciones de Bienes | 357.83 | 358.85 |
| Importaciones de Servicios | 436.38 | 437.63 |
| Agro (sorgo, girasol y maíz) | | |

| Dólar ROFEX | Mayorista | TNA |
|-------------|-----------|---------|
| oct-23 | 378.10 | 126.92% |
| nov-23 | 480.10 | 255.72% |
| dic-23 | 712.50 | 460.76% |
| ene-24 | 880.00 | 480.39% |
| feb-24 | 985.00 | 459.67% |
| mar-24 | 1094.00 | 453.54% |
| abr-24 | 1165.00 | 414.43% |
| may-24 | 1258.00 | 401.08% |
| jun-24 | 1275.00 | 365.25% |
| jul-24 | 1315.00 | 338.71% |
| ago-24 | 1370.00 | 325.17% |

| Tipo de Cambio - Futuro FORWARD | Último | vs. Spot (en ARS) |
|---------------------------------|---------|-------------------|
| 1 mes | 393.61 | 43.69 |
| 2 meses | 528.31 | 178.39 |
| 3 meses | 779.43 | 429.51 |
| 6 meses | 1119.17 | 769.25 |
| 9 meses | 1359.69 | 1009.77 |
| 12 meses | 1555.93 | 1206.01 |

| Coeficiente de Estabilización de Referencia (CER) | |
|---|--------|
| Valor diario | 139.09 |

| Ahorro y Crédito | |
|-----------------------------|--------|
| Unidad de Valor Adquisitivo | 347.18 |
| Unidad de Vivienda | 306.53 |

| Reservas Internacionales (en M de USD) | |
|--|--------|
| Valor diario | 26,259 |

| Tasa de Política Monetaria (%) | TNA |
|--------------------------------|--------|
| Letras de Liquidez (Leliq) | 118.00 |

| Tasa de Call Money (%) | TNA |
|--------------------------|--------|
| Oficial 1 día | 111.00 |
| Privada 1 día 1ra Línea | 111.00 |
| Privada 7 días 1ra Línea | 113.00 |
| Privada 1 día 2da Línea | 112.00 |
| Privada 7 días 2da Línea | 114.00 |

| Tasa de Pases (%) | TNA |
|-------------------|--------|
| Pasivos 1 día | - |
| Activos 1 día | 140.00 |

| Tasa REPO (%) | TNA |
|---------------|-------|
| REPO 1 día | 89.47 |

| Tasa de Depósitos (%) | TNA |
|---------------------------------------|--------|
| Plazo Fijo en pesos 30 días | 118.00 |
| Plazo Fijo en pesos 30 días 2da línea | 120.00 |
| Plazo Fijo en dólares 30 días | 0.50 |

| Tasa de Préstamos (%) | TNA |
|------------------------------|--------|
| Préstamos en pesos 1ra línea | 110.42 |

| Interbancaria BAIBAR (%) | TNA |
|--------------------------|--------|
| Bancos Privados | 110.87 |

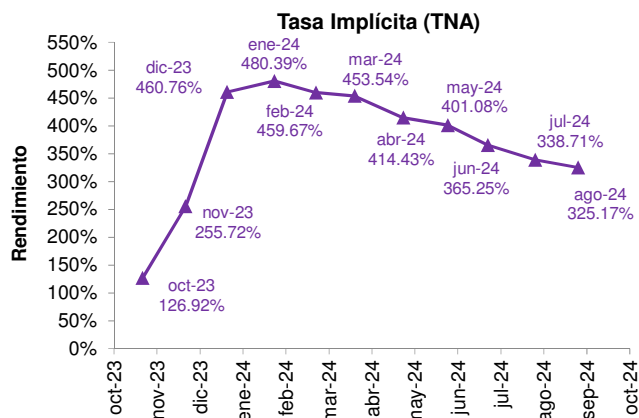
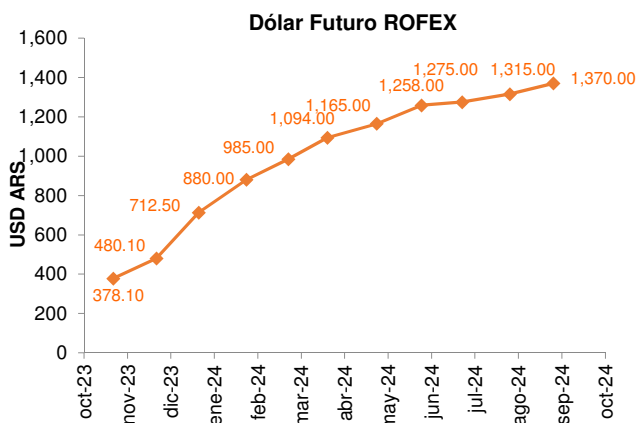
| Interbancaria BADLAR (%) | TNA |
|---------------------------|---------|
| Badlar Privada en pesos | 114.000 |
| Badlar Pública en pesos | 112.750 |
| Badlar Privada en dólares | 0.188 |
| Badlar Pública en dólares | 0.50 |

| Cauciones (%) | | TNA |
|--------------------------------|--|--------|
| Caución BCBA 7 días en dólares | | 1.10 |
| Caución BCBA 7 días en pesos | | 96.00 |
| Caución BCBA 14 días en pesos | | 102.00 |
| Caución BCBA 21 días en pesos | | 110.00 |
| Caución BCBA 30 días en pesos | | 110.10 |

| Tasas Pasivas BNA (%) | TEA | TNA |
|-----------------------|---------|--------|
| Pesos 30 días | 208.400 | 118.00 |
| Dólares 30 días | 0.500 | 0.50 |

| Tasas Activas BNA (%) | TNA |
|-----------------------|--------|
| Diversas 30 días | 136.65 |

| Tasa Encuesta (%) | | TNA |
|--------------------------------|--|--------|
| Plazo Fijo pesos Total | | 113.68 |
| Plazo Fijo pesos 30 días | | 114.14 |
| Plazo Fijo pesos 7 a 59 días | | 113.66 |
| Plazo Fijo pesos 60 a +días | | 114.82 |
| Plazo Fijo dólares Total | | 0.34 |
| Plazo Fijo dólares 30 días | | 0.47 |
| Plazo Fijo dólares 7 a 59 días | | 0.34 |
| Plazo Fijo dólares 60 a +días | | 0.39 |
| C. Ahorro pesos | | 42.34 |
| C. Ahorro dólares | | 0.02 |





DÓLARES IMPLÍCITOS

DÓLAR MEP y CCL -Calculado con Bonos-

| Especie | Ticker | Cotizaciones | | | Variación % Dólar/Cable | Dólar MEP | Dólar CCL | Spread % MEP/CCL |
|-------------|--------|---------------|----------------------------|---------------------------|----------------------------|---------------|---------------|---------------------|
| | | en pesos ByMA | en dólares ByMA (Dólar) | en dólares OTC (Cable) | | | | |
| Bonar 2029 | AL29 | 21,900.00 | 25.62 | 25.62 | 0.0% | 854.80 | 854.80 | 0.0% |
| Bonar 2030 | AL30 | 21,440.00 | 26.15 | 24.25 | 7.8% | 820.01 | 884.12 | -7.3% |
| Bonar 2035 | AL35 | 20,980.00 | 24.50 | 26.01 | -5.8% | 856.33 | 806.61 | 6.2% |
| Bonar 2038 | AE38 | 22,700.00 | 27.40 | 27.40 | 0.0% | 828.47 | 828.47 | 0.0% |
| Bonar 2041 | AL41 | 21,250.00 | 26.30 | 23.13 | 13.7% | 807.98 | 918.92 | -12.1% |
| Global 2029 | GD29 | 24,180.00 | 29.00 | 25.00 | 16.0% | 833.79 | 967.20 | -13.8% |
| Global 2030 | GD30 | 24,220.00 | 29.54 | 25.75 | 14.7% | 819.91 | 940.66 | -12.8% |
| Global 2035 | GD35 | 22,050.00 | 26.39 | 23.00 | 14.7% | 835.54 | 958.70 | -12.8% |
| Global 2038 | GD38 | 26,800.00 | 32.50 | 27.50 | 18.2% | 824.62 | 974.55 | -15.4% |
| Global 2041 | GD41 | 22,900.00 | 28.00 | 24.25 | 15.5% | 817.86 | 944.33 | -13.4% |
| Global 2046 | GD46 | 22,200.00 | 25.95 | 23.00 | 12.8% | 855.49 | 965.22 | -11.4% |

DÓLAR CCL -Calculado con Acciones-

| Especie | Ticker (ByMA) | Cotizaciones | | Dólar CCL |
|-------------------------------|------------------|---------------|----------------------------|-----------------|
| | | en pesos ByMA | en dólares (Nueva York) | |
| Cresud | CRES | 645.15 | 6.61 | 976.02 |
| BBVA Banco Francés | BBVA | 1,197.85 | 4.28 | 839.61 |
| Banco Macro | BMA | 1,617.50 | 18.97 | 852.66 |
| Grupo Supervielle | SUPV | 362.20 | 2.07 | 874.88 |
| Grupo Financiero Galicia | GGAL | 1,104.80 | 12.77 | 865.15 |
| YPF | YPFD | 9,955.15 | 11.40 | 873.26 |
| Loma Negra | LOMA | 1,056.95 | 6.13 | 862.11 |
| IRSA | IRSA | 753.15 | 6.78 | 1,110.84 |
| Telecom Argentina | TECO2 | 894.05 | 4.88 | 916.03 |
| Pampa Energía | PAMP | 1,336.30 | 37.54 | 889.92 |
| Central Puerto | CEPU | 536.70 | 5.83 | 920.58 |
| Edenor | EDN | 521.25 | 12.04 | 865.86 |
| Transportadora de Gas del Sur | TGSU2 | 1,907.00 | 10.76 | 886.15 |



VARIABLES MACROECONÓMICAS

Estimaciones del Consenso y REM del BCRA

ARGENTINA: PROYECCIONES DE VARIABLES MACROECONÓMICAS

| Indicador | 2017 | 2018 | 2019 | 2020 | 2021 | 2022e | 2023e | 2024e | 2025e |
|---------------------------------|-------|-------|-------|-------|--------|--------|--------|-------|-------|
| PIB real (YoY%) | 2.8 | -2.6 | -2.0 | -9.9 | 10.4 | 5.2 | -3.0 | -0.6 | 3.0 |
| Consumo privado (YoY%) | 3.7 | -1.5 | -6.9 | | | | | | |
| Consumo del Estado (YoY%) | 2.5 | -3.2 | -0.7 | | | | | | |
| Inversión en capital fijo (YoY) | 10.3 | -3.1 | -16.0 | | | | | | |
| Exportaciones (YoY%) | 0.4 | -6.1 | -21.0 | -10.5 | 29.8 | 14.4 | -4.5 | 1.6 | 0.8 |
| Importaciones (YoY%) | 12.4 | -0.4 | 12.3 | -12.9 | 12.6 | 0.7 | 3.9 | 4.8 | 5.1 |
| Producción industrial (YoY%) | 2.0 | -3.8 | -7.8 | | | | | | |
| IPC (oficial, YoY) | 23.6 | 47.6 | 53.8 | 36.1 | 48.4 | 94.8 | 169.3 | | |
| Desempleo (%) | 8.4 | 9.2 | 9.8 | 11.6 | 8.7 | 6.9 | 6.9 | 6.9 | 6.9 |
| Cuenta Corriente (% del PIB) | -4.8 | -5.2 | -0.8 | 0.8 | 1.4 | -0.7 | 1.0 | 0.8 | |
| Balance fiscal (% de PIB) | -6.8 | -4.4 | -4.1 | | | | | | |
| Tasa del Banco Central (%) | | 59.25 | 55.00 | 38.00 | 34.50 | 75.00 | 124.47 | | |
| USDARS | 18.62 | 37.67 | 62.50 | 86.16 | 105.75 | 177.16 | 510.01 | | |

Fuente: FMI, R.E.M. del BCRA

RELEVAMIENTO DE EXPECTATIVAS DE MERCADO (R.E.M.) DEL BCRA

ACTIVIDAD

Expectativas de crecimiento anual: variación % promedio anual, a precios constantes

| | Mediana (AGO-23) | Mediana (JUL-23) | Var bps | Promedio (AGO-23) | Promedio (JUL-23) | Var bps |
|------|------------------|------------------|---------|-------------------|-------------------|---------|
| 2023 | -3.0 | -2.8 | -20 | -2.5 | -2.4 | -10 |

Expectativas de crecimiento trimestral: variación % QoQ, a precios constantes

| | Mediana (AGO-23) | Mediana (JUL-23) | Var bps | Promedio (AGO-23) | Promedio (JUL-23) | Var bps |
|-------|------------------|------------------|---------|-------------------|-------------------|---------|
| 2ºT23 | -2.5 | -2.3 | -20 | -2.5 | -2.4 | -10 |
| 3ºT23 | -1.5 | -1.3 | -20 | -0.6 | -0.3 | -30 |
| 4ºT23 | -1.5 | -1.2 | -30 | -1.5 | -1.3 | -20 |

PRECIOS MINORISTAS (NIVEL GENERAL)

Expectativas de inflación minorista (IPC Nivel General-Nacional): variación % MoM

| | Mediana (AGO-23) | Mediana (JUL-23) | Var bps | Promedio (AGO-23) | Promedio (JUL-23) | Var bps |
|---------------|------------------|------------------|---------|-------------------|-------------------|---------|
| ago-23 | 11.8 | 7.9 | 390 | 11.6 | 7.8 | 380 |
| sep-23 | 12.0 | 7.8 | 420 | 11.4 | 7.8 | 360 |
| oct-23 | 9.1 | 7.8 | 130 | 9.2 | 7.8 | 140 |
| nov-23 | 9.4 | 8.0 | 140 | 10.5 | 7.7 | 280 |
| dic-23 | 13.2 | 8.8 | 440 | 15.6 | 10.6 | 500 |
| ene-24 | 14.3 | 10.7 | 360 | 15.6 | 13.4 | 220 |
| feb-24 | 11.7 | - | - | 12.6 | - | - |
| Próx 12 meses | 197.5 | 154.9 | 4,260 | 203.2 | 159.2 | 4,400 |
| 2023 | 169.3 | 140.7 | 2,860 | 178.2 | 140.9 | 3,730 |

PRECIOS MINORISTAS (NUCLEO)

Expectativas de inflación minorista (IPC Núcleo-Nacional): variación % MoM

| | Mediana (AGO-23) | Mediana (JUL-23) | Var bps | Promedio (AGO-23) | Promedio (JUL-23) | Var bps |
|---------------|------------------|------------------|---------|-------------------|-------------------|---------|
| ago-23 | 12.0 | 7.8 | 420 | 11.8 | 7.9 | 390 |
| sep-23 | 11.9 | 7.8 | 410 | 11.6 | 7.9 | 370 |
| oct-23 | 9.3 | 7.7 | 160 | 9.8 | 8.0 | 180 |
| nov-23 | 9.6 | 7.8 | 180 | 11.4 | 8.1 | 330 |
| dic-23 | 13.5 | 8.9 | 460 | 15.1 | 9.8 | 530 |
| ene-24 | 14.9 | 11.4 | 350 | 15.9 | 12.8 | 310 |
| feb-24 | 11.7 | - | - | 12.8 | - | - |
| Próx 12 meses | 197.1 | 160.0 | 3,710 | 210.4 | 156.9 | 5,350 |
| 2023 | 173.2 | 142.2 | 3,100 | 183.9 | 141.6 | 4,230 |



VARIABLES MACROECONÓMICAS

Estimaciones del Consenso y REM del BCRA

POLÍTICA MONETARIA

Expectativas de Tasa de Política Monetaria: BADLAR Bnacos Privados, TNA, %

| | Mediana (AGO-23) | Mediana (JUL-23) | Var bps | Promedio (AGO-23) | Promedio (JUL-23) | Var bps |
|---------------|---------------------|---------------------|---------|----------------------|----------------------|---------|
| sep-23 | 113.00 | 92.60 | 2,040 | 113.70 | 92.64 | 2,106 |
| oct-23 | 115.00 | 93.00 | 2,200 | 119.15 | 92.72 | 2,643 |
| nov-23 | 117.88 | 93.18 | 2,470 | 126.21 | 93.78 | 3,243 |
| dic-23 | 124.47 | 96.97 | 2,750 | 136.82 | 102.60 | 3,422 |
| ene-24 | 125.00 | 101.70 | 2,330 | 136.74 | 111.79 | 2,495 |
| feb-24 | 124.00 | - | - | 130.89 | - | - |
| Próx 12 meses | 81.39 | 84.59 | -320 | 83.48 | 76.90 | 658 |
| 2023 | 124.47 | 96.97 | 2,750 | 136.82 | 102.60 | 3,422 |

RESULTADO PRIMARIO DEL SECTOR PÚBLICO NACIONAL NO FINANCIERO

Expectativas de Resultado Primario del SPNF: variación en billones de ARS

| | Mediana (AGO-23) | Mediana (JUL-23) | Var Bn de ARS | Promedio (AGO-23) | Promedio (JUL-23) | Var Bn de ARS |
|------|---------------------|---------------------|------------------|----------------------|----------------------|------------------|
| 2023 | -4,488.0 | -4,144.0 | -344.0 | -4,215.0 | -3,790.0 | -425.0 |

TIPO DE CAMBIO

Expectativas de tipo de cambio nominal: USDARS (Mayorista)

| | Precio Spot | Mediana (AGO-23) | Mediana (JUL-23) | Var % con Spot | Promedio (AGO-23) | Promedio (JUL-23) | Var % con Spot |
|---------------|----------------|---------------------|---------------------|-------------------|----------------------|----------------------|-------------------|
| sep-23 | 350.10 | 350.00 | 307.20 | 0.0% | 351.13 | 287.65 | -0.3% |
| oct-23 | 350.10 | 350.03 | 329.82 | 0.0% | 375.54 | 308.85 | -6.8% |
| nov-23 | 350.10 | 405.47 | 355.00 | -13.7% | 431.96 | 332.02 | -19.0% |
| dic-23 | 350.10 | 510.01 | 423.22 | -31.4% | 575.65 | 354.46 | -39.2% |
| ene-24 | 350.10 | 669.81 | 499.10 | -47.7% | 667.52 | 441.95 | -47.6% |
| feb-24 | 350.10 | 738.01 | - | - | 731.92 | - | - |
| Próx 12 meses | 350.10 | 913.30 | 740.28 | -61.7% | 1,000.72 | 744.29 | -65.0% |
| 2023 | 350.10 | 510.01 | 423.22 | -31.4% | 575.65 | 441.95 | -39.2% |



CALENDARIO BURSÁTIL

Octubre de 2023

| Fecha | Evento |
|------------|---|
| 9-octubre | Pago de renta – LMS1O; MRC9O; PNACO; RCCJO; RIS1O; RIS2O |
| 9-octubre | Pago de amortización – LMS1O |
| 10-octubre | Pago de renta – MI31; RIR1O; RIR2O; YCMCO; YMCNO |
| 10-octubre | Pago de amortización – MI31 |
| 11-octubre | Pago de renta – BAF24; MGCGO; RNA24 |
| 12-octubre | Pago de renta – PBA25; PNECO; PNFCO |
| 13-octubre | Pago de renta – BLO23; DRSAO; TTC6O |
| 13-octubre | Pago de amortización – BLO23 |
| 13-octubre | Feriatos bursátiles: Feriado con fines turísticos |
| 14-octubre | Pago de renta – GN39O; HBC4O; LIC5O; PEC4O; PEC5O; T3X4; T4X4 |
| 14-octubre | Pago de amortización – HBC4O |
| 15-octubre | Pago de renta – CH9BO; CHS8O; DRS7O; MGC3O; MGCB0; PR13; STC8O; STC9O |
| 15-octubre | Pago de amortización – CH9BO; CHS8O; DRS7O; PR13; STC8O; STC9O |
| 16-octubre | Pago de renta – TTC5O |
| 16-octubre | Feriatos bursátiles: Día del Respeto a la Diversidad Cultural |
| 17-octubre | Pago de renta – MRCMO; TFU27; TO23; TO26 |
| 17-octubre | Pago de amortización – TFU27; TO23 |
| 18-octubre | Pago de renta – AA25; AA37; BP28; CXCJO; MRCGO; SNS7O; TB24 |
| 18-octubre | Pago de amortización – CXCJO; X18O3 |
| 19-octubre | Pago de renta – BSCOO; CP29O; PQCJO |
| 20-octubre | Pago de renta – BU3D3; BUO23; CWC4O; DRSBO; MJO26; MRCPO; RCCIO; RNL24; TLC8O |
| 20-octubre | Pago de amortización – BU3D3; BUO23; MJO26 |
| 20-octubre | Vencimiento Opciones sobre acciones |
| 21-octubre | Pago de renta – WNCHO; WNCIO; YCAA0 |
| 21-octubre | Pago de amortización – YCAA0 |
| 22-octubre | Pago de renta – AA26; AA46; BAO23; XA26; XA46 |
| 22-octubre | Pago de amortización – BAO23; FOS1O |
| 23-octubre | Pago de renta – PEC2O |
| 24-octubre | Pago de renta – DH31O; RAC5O |
| 24-octubre | Pago de amortización – DH31O |
| 25-octubre | Pago de renta – XBA24; XBE24; YMCPO |
| 26-octubre | Pago de renta – JNC3O; MRCNO; PUL26; RICA0 |
| 26-octubre | Pago de amortización – PUL26 |
| 27-octubre | Pago de renta – BAO25; CO26; NDT25; PQCAO; TC25P; TN58O; TN59O |
| 27-octubre | Pago de amortización – BAO25; CO26; PQCAO |
| 28-octubre | Pago de renta – DH22O |
| 28-octubre | Pago de amortización – DH22O |
| 29-octubre | Pago de renta – NV51O; NV52O; PAC3O; RB53O |
| 29-octubre | Pago de amortización – NV51O; PAC3O; RB53O |
| 29-octubre | Vencimiento Opciones sobre Títulos Públicos |
| 30-octubre | Pago de renta – PNDCO; TV24 |
| 31-octubre | Pago de renta – D31O3; LDCEO; T512O; TN52O |
| 31-octubre | Pago de amortización – D31O3; S31O3 |



¿Tiene algún comentario y/o pregunta?

Contáctenos:



Este reporte ha sido elaborado en base a información obtenida de: *Thomson Reuters, Bloomberg, Valor Futuro, FMI, CEPAL, Ámbito Financiero, Cronista Comercial, Buenos Aires Económico, La Nación, Clarín, InfoBAE, InfoBAE América, América Economía, AP, Marketwatch, Yahoo!, BBC, 5dias.com, iProfesional, The Economist, Benzinga, WSJ, Bolsar, Seeking Alpha, CNBC, Economía y Finanzas, CNN, Télam, BID, USDA, CME, OCDE, informes de gobiernos, bancos y bolsas, diarios oficiales, entre otros, todos de circulación masiva y pública.*

Este informe fue confeccionado sólo con propósitos informativos y su intención no es la de recomendar la compra o venta de algún título o bien. Contiene información disponible en el mercado y dichas fuentes se presumen confiables. Sin embargo, no podemos garantizar la integridad o exactitud de las mismas. Todas las opiniones y estimaciones reflejan el juicio actual del autor a la fecha del informe, y su contenido puede ser objeto de cambios sin previo aviso. El valor de una inversión ha de variar como resultado de los cambios en el mercado. La información contenida en este informe no es una predicción de resultados, ni asegura alguno. En la medida en que la información obtenida del informe pueda considerarse como recomendación, dicha información es impersonal y no está adaptada a las necesidades de inversión de ninguna persona específica. Por lo tanto, no refleja todos los riesgos u otros temas relevantes relacionados a las inversiones en los activos mencionados. Antes de realizar una inversión, los interesados deben asegurarse que comprenden las condiciones y cualquier riesgo asociado. Recomendamos que se asesore con un profesional. Research for Traders no recibe ninguna remuneración a consecuencia de las operaciones realizadas sobre activos mencionados en el informe. Se encuentra prohibido reenviar este mail con sus contenidos y/o adjuntos dado que es información privada para aquellos a los cuales se les ha remitido. Por lo tanto, no podrá ser reproducido ni total ni parcialmente sin previa autorización de Research for Traders.

This report is for information purposes only and is not intended to recommend the purchase or sale of any security or investment. It contains information available in the market and such sources presumed to be reliable. However, no guarantees can be made about the integrity or accuracy of it. All opinions and estimates herein reflect the current judgment of the author as of the date of the report and it may be subject to change without notice. The value of any investment may fluctuate as a result of market changes. The information in this report is not a prediction of results and no assurances are given with respect thereto. If any information from the report can be considered as a recommendation, such information is impersonal and not suitable to the investment needs of any specific person. Therefore, it does not disclose all the risks and other significant issues related to an investment in assets mentioned. Before making an investment, potential investors should ensure that they understand the terms and the associated risks. We strongly recommend looking for professional advice. Research for Traders receives no compensation as a result of transactions on assets mentioned in the report. It is not allowed to forward this mail with its contents and/or attachments as it is private information for those who are sent to them. Therefore, it may not be reproduced in whole or in part without prior approval of Research for Traders.

Copyright 2011 © Research for Traders. All rights reserved.