



RENDA VARIABLE

Índices Bursátiles y ETFs

BOLSAS DE EE.UU.									
	Moneda	Último*	% YTD	% 1Y	% MTD	% 1M	% WTD	% 1D	
Dow Jones Industrial Average	USD	34,837.71	5.1	11.2	0.3	-0.6	0.0	0.0	
NASDAQ 100	USD	15,490.86	41.6	28.0	-0.1	1.4	0.0	0.0	
Nasdaq Composite	USD	14,031.82	34.1	20.6	-0.0	1.0	0.0	0.0	
S&P 500 Index	USD	4,515.77	17.6	15.1	0.2	0.8	0.0	0.0	
<i>*Moneda local, Cierre del día anterior</i>									
ETFs (en USD)									
	Ticker	Último*	D.Yield (%)	% YTD	% 1Y	% MTD	% WTD	% 1D	Volat. 90D
SPDR S&P 500 ETF Trust	SPY	451.19	1.4	18.0	13.8	0.2	2.6	0.2	11.4
Consumer Discretionary SPDR Fund	XLY	169.67	0.9	31.4	8.1	-0.6	3.0	-0.6	17.4
Consumer Staples Select Sector SPDR	XLP	72.14	2.6	-3.2	-1.9	-0.9	-0.4	-0.9	9.8
Energy Select Sector SPDR Fund	XLE	90.74	3.5	3.7	15.6	2.0	3.6	2.0	20.9
Financial Select Sector SPDR Fund	XLFX	34.69	2.0	1.4	4.6	0.9	2.1	0.9	13.9
Health Care Select Sector SPDR	XLV	133.57	1.6	-1.7	5.3	0.3	0.1	0.3	10.6
Industrial Select Sector SPDR Fund	XLI	108.80	1.6	10.8	16.9	0.5	2.1	0.5	13.7
Materials Select Sector SPDR	XLB	83.82	2.0	7.9	12.6	1.1	3.7	1.1	15.1
Technology Select Sector SPDR Fund	XLK	176.20	0.8	41.6	30.9	0.3	4.4	0.3	18.4
Utilities Select Sector SPDR Fund	XLU	62.64	3.4	-11.1	-16.9	-0.5	-1.6	-0.5	14.4
iShares US Real Estate ETF	IYR	85.39	3.0	1.4	-9.6	0.1	1.9	0.1	15.2
Ishares Trust Dj Us Telecom	IYZ	22.74	2.4	1.4	-8.2	-0.5	3.7	-0.5	17.8
<i>*Moneda local, Cierre del día anterior</i>									
BOLSAS DE EUROPA									
	Moneda	Último*	% YTD	% 1Y	% MTD	% 1M	% WTD	% 1D	
CAC-40 Paris, Francia	EUR	7,256.39	12.4	18.0	-0.5	-0.5	-0.2	-0.3	
DAX XETRA - Frankfurt, Alemania	EUR	15,803.50	13.7	21.3	-0.8	-0.8	-0.1	-0.1	
FTSE - 100, Reino Unido	GBP	7,463.57	0.0	2.4	0.2	-1.5	-0.2	0.2	
IBEX 35 - Madrid, España	EUR	9,424.90	14.4	18.7	-0.9	0.5	-0.4	0.1	
MIB 30 - Milán, Italia	EUR	28,635.78	20.8	30.7	-0.6	0.2	-0.0	-0.0	
<i>*Moneda local, Cotización al 05/09/2023 7:54:01</i>									
BOLSAS DE ASIA, MEDIO ORIENTE y OCEANÍA									
	Moneda	Último*	% YTD	% 1Y	% MTD	% 1M	% WTD	% 1D	
Nikkei-225 - Japón	JPY	33,036.76	26.6	19.6	1.3	2.6	1.0	0.3	
Shanghai Composite - China	CNY	3,154.37	2.1	-1.4	1.1	-4.1	0.7	-0.7	
Hang Seng - Hong Kong	HKD	18,456.91	-6.7	-4.0	0.4	-5.5	0.4	-2.1	
BSE 30 - Bombay, India	INR	65,780.26	7.9	11.6	1.2	-0.1	0.4	0.2	
ALL ORD - Australia	AUD	7,516.80	4.1	6.3	-0.0	-0.3	0.4	-0.1	
MOEX Russia Ind.	RUB	4,273.52	51.8	32.3	1.3	5.7	1.2	-0.3	
Turquía (XU100)	TRY	8,175.46	47.8	152.6	2.8	10.0	1.1	0.4	
<i>*Moneda local, Cierre del día</i>									
BOLSAS DE LATINOAMÉRICA									
	Moneda	Último*	% YTD	% 1Y	% MTD	% 1M	% WTD	% 1D	
IBOVESPA- Brasil	BRL	117,776.62	7.3	6.2	1.8	-1.4	-0.1	-0.1	
S&P IPC - Mexico	MXN	53,030.52	9.4	15.6	0.0	-1.8	-0.2	-0.2	
COLCAP - Colombia	COP	1,077.55	-16.2	-12.6	0.1	-7.9	-0.7	-0.7	
S&P BVL - Perú	PEN	23,250.71	9.0	23.9	0.5	-1.7	-0.2	-0.2	
S&P IGPA - Chile	CLP	5,990.24	13.8	6.0	-0.3	-4.8	-0.1	-0.1	
S&P Merval- Argentina	ARS	633,243.31	213.4	364.6	-3.1	40.2	-0.2	-0.2	
<i>*Moneda local, Cierre del día anterior</i>									



RENDA VARIABLE

Índices Bursátiles y ETFs

ÍNDICES BURSÁTILES Y ETFs (en USD)	Ticker	Moneda	Último*	% YTD	% 1Y	% MTD	% 1M	% WTD	% 1D
SPDR S&P Dividend ETF	SDY	USD	122.46	-2.1	-1.2	0.2	-3.1	1.2	0.2
iShares Russell 2000 ETF	IWM	USD	190.85	9.5	5.2	1.2	-3.5	3.7	1.2
Invesco QQQ Trust Series 1	QQQ	USD	377.59	41.8	26.1	-0.1	-1.4	3.7	-0.1
iShares MSCI Canada Index	EWC	USD	34.93	6.7	4.7	0.7	-1.9	3.9	0.7
iShares MSCI EAFE ETF	EFA	USD	71.49	8.9	17.4	-0.1	-2.8	1.8	-0.1
iShares MSCI Eurozone ETF	EZU	USD	44.54	12.8	28.0	-0.6	-3.9	0.9	-0.6
iShares MSCI Germany ETF	EWG	USD	27.61	11.6	28.2	-1.1	-4.5	0.8	-1.1
iShares MSCI United Kingdom ETF	EWU	USD	32.06	4.6	12.8	0.2	-2.9	1.8	0.2
iShares MSCI Japan ETF	EWJ	USD	62.04	14.0	17.2	0.6	-1.0	3.5	0.6
iShares MSCI Pacific ex Japan ETF	EPP	USD	41.33	-3.4	-0.4	0.4	-4.4	3.6	0.4
iShares MSCI Hong Kong Index Fund	EWH	USD	18.43	-12.3	-9.3	1.5	-6.4	4.7	1.5
iShares MSCI South Korea ETF	EWY	USD	63.21	11.9	11.5	1.2	-6.4	1.9	1.2
iShares MSCI Australia Inc	EWA	USD	22.25	0.1	2.4	0.2	-2.8	3.4	0.2
iShares MSCI Emerging Markets ETF	EEM	USD	39.63	4.6	1.3	1.2	-4.3	1.9	1.2
iShares MSCI China ETF	MCHI	USD	45.89	-2.7	-6.1	2.2	-5.8	4.9	2.2
iShares China Large-Cap Etf	FXI	USD	28.04	-0.9	-6.1	2.3	-5.5	4.7	2.3
iShares MSCI Malaysia	EWM	USD	21.23	-7.0	-4.2	0.7	-1.8	1.2	0.7
iShares MSCI Taiwan Index Fund	EWT	USD	45.76	13.9	-7.5	0.4	-4.1	0.6	0.4
iShares MSCI Turkey Inv. Market Ind.	TUR	USD	38.13	3.1	70.5	1.8	14.4	3.1	1.8
iShares MSCI Thailand ETF	THD	USD	68.84	-8.4	-0.4	-0.3	-1.7	-0.5	-0.3
iShares S & P Latam 40 Index Fund	ILF	USD	26.47	15.6	8.9	1.4	-5.1	0.1	1.4
iShares MSCI Brazil ETF	EWZ	USD	31.44	12.4	3.2	1.9	-5.4	0.4	1.9
iShares MSCI Mexico ETF	EWX	USD	61.46	24.3	37.6	-0.3	-3.4	-2.2	-0.3
iShares MSCI Chile ETF	ECH	USD	28.46	5.1	3.7	1.0	-8.0	-0.9	1.0
Global X MSCI Argentina ETF	ARGT	USD	47.78	40.7	60.1	0.7	3.4	4.3	0.7

*Cierre del día anterior



TREASURIES	Último	T.I.R. %	Var.bps
Treasury EE.UU. 1 mes (UST1M)	99.60	5.461	7.6
Treasury EE.UU. 2 meses (UST2M)	99.18	5.476	5.6
Treasury EE.UU. 3 meses (UST3M)	98.74	5.473	2.9
Treasury EE.UU. 6 meses (UST6M)	97.42	5.508	1.3
Treasury EE.UU. 1 año (UST1Y)	95.19	5.420	4.1
Treasury EE.UU. 2 años (UST2Y)	100.16	4.916	4.8
Treasury EE.UU. 3 años (UST3Y)	99.31	4.627	5.2
Treasury EE.UU. 5 años (UST5Y)	100.15	4.341	5.0
Treasury EE.UU. 7 años (UST7Y)	98.89	4.311	4.9
Treasury EE.UU. 10 años (UST10Y)	97.19	4.224	5.1
Treasury EE.UU. 20 años (UST20Y)	98.05	4.525	4.7
Treasury EE.UU. 30 años (UST30Y)	96.48	4.336	5.1
Bono a 10 años Alemania	99.97	2.603	2.5
Bono a 10 años Francia	98.91	3.130	2.5
Bono a 10 años Italia	100.59	4.322	2.7
Bono a 10 años España	99.24	3.641	2.9
Bono a 10 años Reino Unido	90.52	4.497	3.4

RENTA FIJA	Cupón %	Maturity	T.I.R. %	Var. bps.
Australia (en AUD)	3.000	21/11/2033	4.145	0.7
Eurozona (en EUR)	2.600	15/08/2033	2.603	2.5
Grecia (en EUR)	4.250	15/06/2033	3.953	1.1
Japón (en JPY)	0.400	20/06/2033	0.644	0.0
Portugal (en EUR)	1.650	16/07/2032	3.343	3.4
Suiza (en CHF)	3.500	08/04/2033	0.951	-1.9
Brasil (en BRL)	10.000	01/01/2033	11.22	0.0
Argentina (en ARS)	5.830	31/12/2033	6.86	0.0
Chile (en CLP)	6.000	01/01/2032	5.76	0.0
Uruguay (en UYU)	2.500	24/08/2034	3.26	0.0
China (en CNY)	3.000	01/01/2034	2.42	0.0
Colombia (en COP)	7.000	30/06/2032	10.60	16.0
India (en INR)	7.260	06/02/2033	7.20	0.0
Indonesia (en IDR)	7.000	15/02/2033	6.45	6.3
Malasia (en MYR)	3.844	15/04/2033	3.88	0.0
México (en USD)	7.750	29/05/2031	9.43	1.7
Polonia (en PLN)	6.000	25/10/2033	5.57	-3.7
Rusia (en RUB)	7.700	23/03/2033	12.11	0.0

ETFs GLOBALES (en USD)	Ticker	Moneda	Último*	D.Yield (%)	% YTD	% 1Y	% MTD	% WTD	% 1D
SOBERANOS y CON GARANTÍA ESTATAL									
iShares Trust United States Treasury	TIP	USD	105.20	2.41	-1.2	-5.8	-0.8	-0.2	-0.8
iShares Barclays 7-10 Year Treas. Bond	IEF	USD	93.98	2.73	-1.9	-6.0	-0.9	0.3	-0.9
iShares Core US Aggregate Bond ETF	AGG	USD	96.04	3.02	-1.0	-4.0	-0.8	0.2	-0.8
Vanguard Total Bond Market Index Fund	BND	USD	71.21	2.97	-0.9	-3.8	-0.8	0.2	-0.8
iShares Agency Bond ETF	AGZ	USD	106.53	2.81	0.1	-2.0	-0.4	0.2	-0.4
Invesco Senior Loan ETF	BKLN	USD	21.12	8.02	2.9	1.3	0.1	0.7	0.1
<i>*Cierre del día anterior</i>									
CORPORATIVOS									
iShares iBoxx \$ IG Corporate Bond ETF	LQD	USD	105.03	3.99	-0.4	-3.0	-1.1	0.1	-1.1
iShares Short-Term Corporate Bond ETF	IGSB	USD	50.04	2.96	0.4	-0.4	-0.4	0.1	-0.4
Spdr Barclays Capital Int. Corp. Bond ETF	IBND	USD	28.17	1.62	1.6	6.6	-0.9	-0.0	-0.9
iShares iBoxx \$ HY Corporate Bond Fund	HYG	USD	75.07	5.72	2.0	1.0	-0.3	0.6	-0.3
iShares Broad USD HY Corp. Bond ETF	USHY	USD	35.29	6.66	2.2	0.5	-0.5	0.5	-0.5
SPDR Bloomberg Barclays HY Bond ETF	JNK	USD	91.99	6.56	2.2	0.5	-0.5	0.5	-0.5
SPDR Barclays Short Term HY Bond ETF	SJNK	USD	24.67	6.99	1.8	1.0	-0.6	0.2	-0.6
iShares Preferred and Income Sec. ETF	PFF	USD	30.66	6.90	0.4	-6.7	-0.3	1.4	-0.3
iShares Mortgage Real Estate ETF	REM	USD	24.30	9.96	7.1	-12.7	0.8	4.7	0.8
Vanguard Real Estate Index Fund	VNQ	USD	82.52	4.58	0.0	-11.4	0.2	2.0	0.2
ETFs EMERGENTES (en USD)									
SOBERANOS									
iShares JP MORGAN USD EM Bond	EMB	USD	85.15	4.98	0.7	0.4	-0.7	0.3	-0.7
iShares EM Local Currency Bond ETF	LEMB	USD	36.07	3.00	3.9	6.8	-0.8	-0.7	-0.8
CORPORATIVOS									
iShares EM Corporate Bond ETF	CEMB	USD	42.74	4.71	-0.0	-0.7	-0.4	0.3	-0.4
WisdomTree EM Corporate Bond Fund	EMCB	USD	62.19	4.43	0.5	1.0	-0.2	0.4	-0.2
<i>*Cierre del día anterior</i>									



MONEDAS, TASAS Y COMMODITIES

Precios y Variaciones

MERCADO CAMBIARIO	Último*	% YTD	% MTD	% 6M	% 3M	% 1D
Euro (EUR/USD)	1.0743	0.4	-0.9	0.6	0.3	-0.5
Yen Japonés (USD/JPY)	147.2100	-10.9	-1.1	-7.7	-5.2	-0.5
Franco Suizo (USD/CHF)	0.8883	4.1	-0.6	4.7	2.0	-0.5
Libra Esterlina (GBP/USD)	1.2557	3.8	-0.9	4.5	1.0	-0.5
Dólar Australiano (AUD/USD)	0.6374	-6.4	-1.7	-5.3	-3.6	-1.3
Dólar Canadiense (USD/CAD)	1.3646	-0.7	-1.0	-0.3	-1.5	-0.4
Corona Sueca (USD/SEK)	11.0780	-5.8	-1.2	-5.8	-2.0	-0.9
Corona Noruega (USD/NOK)	10.7272	-8.7	-0.9	-2.9	3.0	-1.0
Dólar Neozelandés (NZD/USD)	0.5875	-7.5	-1.5	-5.2	-3.3	-1.0
Peso Argentino (USDARS)	350.0000	-49.5	-0.0	-43.6	-31.4	0.0
Real Brasileño (USDBRL)	4.9373	7.1	0.4	4.4	-0.2	0.1
Peso Mexicano (USDMXN)	17.2559	13.0	-1.2	4.4	1.2	-0.4
Renminbi Chino (USDCNY)	7.3027	-5.5	-0.6	-5.1	-2.8	-0.4
Rupia India (USDINR)	83.0429	-0.4	-0.4	-1.5	-0.6	-0.4
Rublo Ruso (USDRUB)	97.5425	-23.1	-0.7	-22.5	-16.4	-0.7
Peso Chileno (USDCLP)	859.0500	-1.3	-0.9	-7.3	-7.0	0.0
Peso Colombiano (USDCOP)	4,047.000	19.7	1.0	16.1	5.8	0.1
Nuevo Sol Peruano (USDPEN)	3.6776	2.6	-0.0	2.1	-0.3	0.2
Dólar Hong Kong (USDHKD)	7.8401	-0.4	0.0	0.1	-0.0	-0.1

*Cotización al

05/09/2023 7:54:01

TASAS DE REFERENCIA	Último
EE.UU.	5.50%
Australia	4.10%
Eurozona	3.75%
Canadá	5.25%
Reino Unido	5.25%
Japón	-0.10%
Nueva Zelanda	5.50%
Suiza	1.75%
Suecia	3.75%
Brasil	13.25%
Argentina	118.00%
Chile	10.25%
China	4.35%
Colombia	13.25%
Egipto	20.25%
Malasia	3.00%
México	11.25%
Perú	7.75%
Sudáfrica	8.25%

*Cotización al

05/09/2023 7:54:01

COMMODITIES	Último*	% YTD	% MTD	% 5D	% 1D
ENERGÍA					
Petróleo WTI (USD/bbl)	85.25	6.2	1.9	5.0	-0.4
Petróleo Brent (USD/bbl)	88.34	2.8	1.7	3.3	-0.7
Gas Natural (USD/mmbtu)	2.63	-41.2	-4.9	3.0	-4.8
Gasolina (USD/gal)	2.60	5.7	-6.0	-6.9	0.3
METALES PRECIOSOS					
Oro (USD/oz)	1,934.40	6.3	-0.2	-0.1	-0.3
Plata (USD/oz)	23.59	-1.1	-3.6	-4.8	-2.7
Platino (USD/oz)	965.60	-10.1	-0.6	-1.7	0.0
Paladio (USD/oz)	1,217.20	-32.0	0.8	-1.3	0.0
METALES INDUSTRIALES					
Cobre (USD/lbs)	3.78	-0.6	0.3	-0.3	-0.8
Aluminio (USD/tn)	2,216.25	-8.0	1.9	4.3	0.0
Acero (USD/tn)	712.00	-4.3	-2.3	-11.1	-1.1
AGRÍCOLAS					
Maíz (USD/tn)	183.76	-31.2	1.2	-0.6	0.4
Azúcar (USD/lbs)	25.94	29.4	3.5	1.9	0.5
Café (USD/lbs)	150.95	-9.8	-1.1	-0.3	0.0
Cacao (USD/tn)	3,574.00	37.5	-0.8	0.5	0.0
Soja (USD/tn)	495.99	-11.1	-0.7	-2.3	-0.5
Trigo (USD/tn)	209.14	-28.1	-0.7	-0.1	0.3
Arroz (USD/cwt)	16.65	-7.8	-0.9	0.6	0.0
Algodón (USD/lbs)	86.79	4.1	-1.5	-0.3	-3.2
Canola (USD/tn)	806.50	-6.0	-0.3	-	-0.6

*Cotización al

05/09/2023 7:54:01



MONEDAS, TASAS Y COMMODITIES

Precios y Variaciones

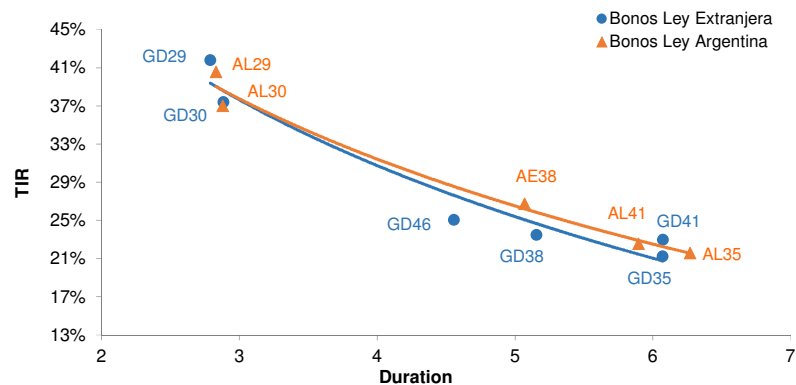
CRIPATOMONEDAS	Último	% YTD	% MTD	% 6M	% 3M	% 1D
Bitcoin	25,751.97	55.4	-1.0	14.9	0.4	-0.4
Ethereum	1,633.15	36.3	-1.0	4.3	-9.5	0.3
Ripple	0.50	46.5	-0.9	35.9	-0.5	-0.8
Bitcoin Cash	194.28	101.1	-5.6	56.9	79.4	0.6
Litecoin	63.03	-7.0	-1.3	-28.0	-28.1	-0.8



BONOS SOBERANOS REESTRUCTURACIÓN 2020

Precios en USD, EUR y ARS - Datos Técnicos y Curva

Especie	Ticker	Fecha Vencimiento	Cupón (%)	Monto Circulación (en M de USD)	Frecuencia cupón	Precio al 05-sep-2023	TIR (%)	Duration	Rating	Mínimo (V/N)	ISIN
BONOS EN DÓLARES - Precios en USD (OTC en el exterior)											
Bono Step Up 2029 - Ley NY	GD29	09/jul/2029	1.000	2,635.0	Semestral	31.25	41.77	2.79	CCC	1	US040114HX11
Bono Step Up 2029 - Ley Arg	AL29	09/jul/2029	1.000	2,196.2	Semestral	32.30	40.56	2.83	CCC	1	ARARGE3209Y4
Bono Step Up 2030 - Ley NY	GD30	09/jul/2030	0.750	16,090.6	Semestral	32.50	37.38	2.88	CCC	1	US040114HS26
Bono Step Up 2030 - Ley Arg	AL30	09/jul/2030	0.750	13,581.3	Semestral	32.93	36.99	2.88	CCC	1	ARARGE3209S6
Bono Step Up 2035 - Ley NY	GD35	09/jul/2035	3.625	20,501.7	Semestral	29.38	22.94	6.07	CCC	1	US040114HT09
Bono Step Up 2035 - Ley Arg	AL35	09/jul/2035	3.625	19,076.8	Semestral	32.30	21.57	6.27	CCC	1	ARARGE3209T4
Bono Step Up 2038 - Ley NY	GD38	09/ene/2038	4.250	11,405.1	Semestral	34.00	23.46	5.15	CCC	1	US040114HU71
Bono Step Up 2038 - Ley Arg	AE38	09/ene/2038	4.250	7,231.4	Semestral	30.00	26.74	5.07	CCC	1	ARARGE3209U2
Bono Step Up 2041 - Ley NY	GD41	09/jul/2041	3.500	10,482.1	Semestral	29.75	21.22	6.07	CCC	1	US040114HV54
Bono Step Up 2041 - Ley Arg	AL41	09/jul/2041	3.500	1,542.2	Semestral	28.25	22.54	5.89	CCC	1	ARARGE3209V0
Bono Step Up 2046 - Ley NY	GD46	09/jul/2046	3.625	2,092.0	Semestral	29.25	25.03	4.56	CCC	1	US040114HW38
BONOS EN EUROS - Precios en EUR (OTC en el exterior)											
Bono Step Up 2029 - Ley Ext	GE29	09/jul/2029	0.500	90.4	Semestral	29.90	47.01	2.82	CCC	1	XS2200244072
Bono Step Up 2030 - Ley Ext	GE30	09/jul/2030	0.125	1,165.6	Semestral	30.30	42.36	2.90	CCC	1	XS2177363665
Bono Step Up 2035 - Ley Ext	GE35	09/jul/2035	2.500	298.8	Semestral	24.98	25.73	6.25	CCC	1	XS2177364390
Bono Step Up 2038 - Ley Ext	GE38	09/ene/2038	3.750	809.3	Semestral	29.24	26.64	5.15	CCC	1	XS2177365017
Bono Step Up 2041 - Ley Ext	GE41	09/jul/2041	3.000	1,572.6	Semestral	26.27	23.50	6.13	CCC	1	XS2177365363
Bono Step Up 2046 - Ley Ext	GE46	09/jul/2046	2.500	248.1	Semestral	25.01	29.15	4.38	CCC	1	XS2177365520
BONOS EN DÓLARES - Precios en ARS (BYMA)											
Bono Step Up 2029 - Ley NY	GD29	09/jul/2029	1.000	2,635.0	Semestral	25,400.00	39.05	2.40	CCC	1	US040114HX11
Bono Step Up 2029 - Ley Arg	AL29	09/jul/2029	1.000	2,196.2	Semestral	23,214.00	43.52	2.31	CCC	1	ARARGE3209Y4
Bono Step Up 2030 - Ley NY	GD30	09/jul/2030	0.750	16,090.6	Semestral	25,970.00	35.00	2.54	CCC	1	US040114HS26
Bono Step Up 2030 - Ley Arg	AL30	09/jul/2030	0.750	13,581.3	Semestral	22,121.00	42.64	2.34	CCC	1	ARARGE3209S6
Bono Step Up 2035 - Ley NY	GD35	09/jul/2035	3.625	20,501.7	Semestral	23,300.00	22.22	5.62	CCC	1	US040114HT09
Bono Step Up 2035 - Ley Arg	AL35	09/jul/2035	3.625	19,076.8	Semestral	22,650.00	22.78	5.56	CCC	1	ARARGE3209T4
Bono Step Up 2038 - Ley NY	GD38	09/ene/2038	4.250	11,405.1	Semestral	27,970.00	21.62	4.89	CCC	1	US040114HU71
Bono Step Up 2038 - Ley Arg	AE38	09/ene/2038	4.250	7,231.4	Semestral	24,700.00	24.51	4.59	CCC	1	ARARGE3209U2
Bono Step Up 2041 - Ley NY	GD41	09/jul/2041	3.500	10,482.1	Semestral	24,348.50	19.74	5.80	CCC	1	US040114HV54
Bono Step Up 2041 - Ley Arg	AL41	09/jul/2041	3.500	1,542.2	Semestral	22,400.00	21.34	5.57	CCC	1	ARARGE3209V0
Bono Step Up 2046 - Ley Arg	GD46	09/jul/2046	3.625	2,092.0	Semestral	23,700.00	23.31	4.36	CCC	1	US040114HW38

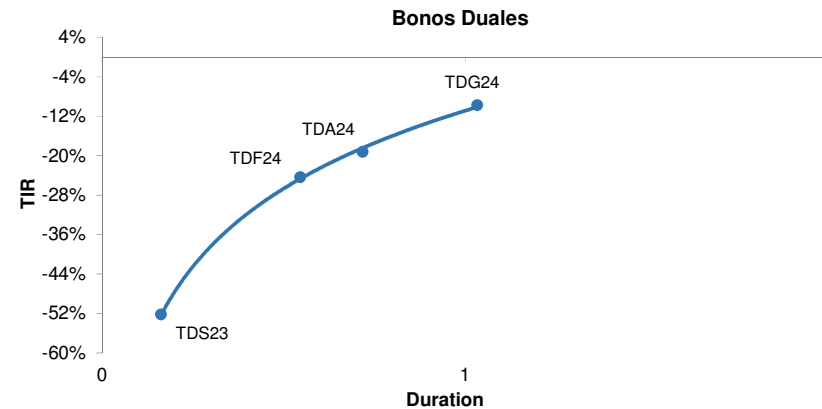




BONOS SOBERANOS EN MONEDA EXTRANJERA

Precios en USD, EUR y ARS - Datos Técnicos

Especie	Ticker	Fecha Vencimiento	Cupón (%)	Monto Circulación (en M de USD)	Frecuencia cupón	Precio al 05-sep-2023	TIR (%)	Duration	Rating	Mínimo (V/N)	ISIN
BONOS EN DÓLARES - Precios en USD (OTC en el exterior)											
Cupón Ligado al PIB en USD Ley Arg Canje 2005	TVPA	15/dic/2035	-	3,103.4	Semestral	0.58	-	-	CCC	1	ARARGE03E154
Cupón Ligado al PIB en USD Ley NY Canje 2005	TVPY	15/dic/2035	-	14,386.5	Semestral	2.25	-	-	CCC	1	US040114GM64
Cupón Ligado al PIB en USD Ley NY Canje 2010	TVY0	15/dic/2035	-	2,727.0	Semestral	2.25	-	-	CCC	1	XS0501197262
BONOS EN DÓLARES - Precios en ARS (BYMA)											
Cupón Ligado al PIB en USD Ley Arg Canje 2005	TVPA	15/dic/2035	-	3,103.4	Semestral	965.00	-	-	CCC	1	ARARGE03E154
Cupón Ligado al PIB en USD Ley NY Canje 2005	TVPY	15/dic/2035	-	14,386.5	Semestral	2,100.00	-	-	CCC	1	US040114GM64
Cupón Ligado al PIB en USD Ley NY Canje 2010	TVY0	15/dic/2035	-	2,727.0	Semestral	1,800.00	-	-	CCC	1	XS0501197262
BONOS EN EUROS - Precios en EUR (OTC en el exterior)											
Cupón Ligado al PIB en EUR Ley ING Canje 2005	TVPE	15/dic/2035	-	11,807.9	Semestral	4.25	-	-	CCC	1	XS0209139244
BONOS EN EUROS - Precios en ARS (BYMA)											
Cupón Ligado al PIB en EUR Ley ING Canje 2005	TVPE	15/dic/2035	-	11,807.9	Semestral	3,050.00	-	-	CCC	1	XS0209139244
BONOS DOLLAR LINKED - Precios en ARS (BYMA)											
Bono del Tesoro Dollar Linked 0.4% 2024	TV24	30/abr/2024	0.4	3,307.9	Semestral	40,074.00	-18.33	0.71	CCC	1	ARARGE320C18
BONOS DUALES - Precios en ARS (BYMA)											
Bono Dual 2.25% 2023	TDS23	29/sep/2023	2.25	571.9	Anual	32,399.00	-52.16	0.16	CCC	1	ARARGE320CN9
Bono Dual 3.0% 2024	TDF24	28/feb/2024	0.0	7,388.2	Anual	40,010.00	-24.34	0.55	CCC	1	-
Bono Dual 3.25% 2024	TDA24	30/abr/2024	3.25	3,639.1	Anual	40,200.00	-19.21	0.72	R-5	2	ARARGE320DO5
Bono Dual 3.25% 2024	TDG24	30/ago/2024	3.25	5,789.0	Anual	38,699.00	-9.71	1.03	CCC	3	ARARGE320DW8



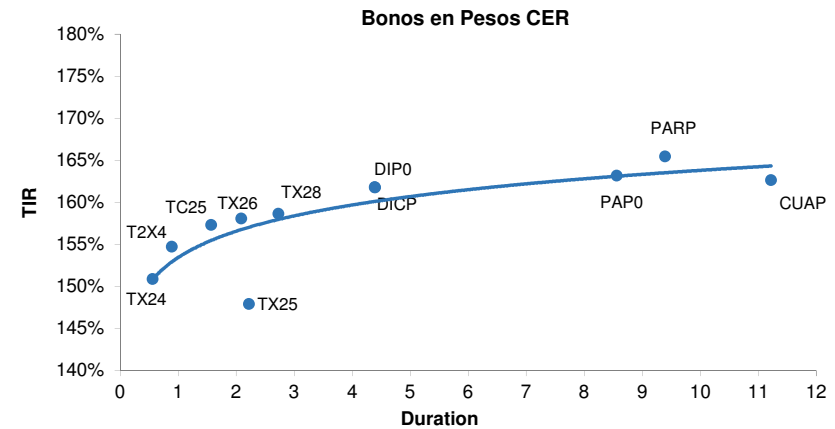
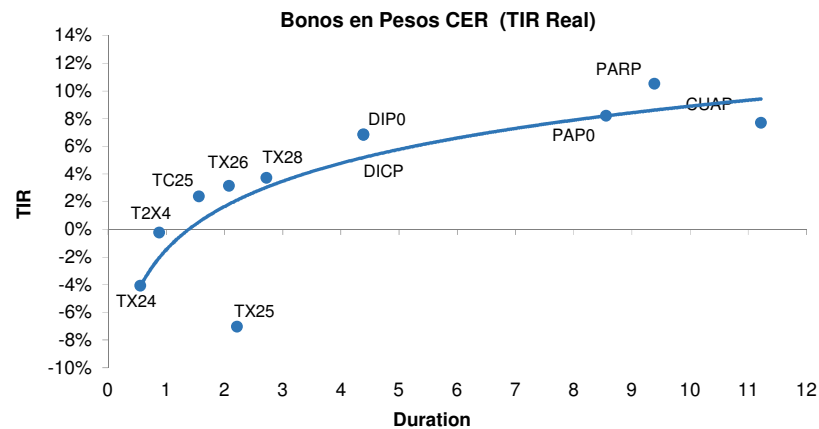


BONOS SOBERANOS EN PESOS

Precios en ARS (BYMA) - Datos Técnicos y Curvas

Especie	Ticker	Fecha Vencimiento	Cupón (%)	Monto Circulación (en M de ARS)	Frecuencia cupón	Precio al 05-sep-2023	Spread (%)	TIR (%)	Duration	Rating	Mínimo (V/N)	ISIN
BONOS EN PESOS												
Cons 6° S 2%	PR13	15/mar/2024	2.000	120.0	Mensual	743.00	-42.25	112.65	0.32	NR	1	ARARGE03B291
Bonte 2024 CER + 1.5%	TX24	25/may/2024	1.500	345,783.0	Semestral	623.80	-4.08	150.82	0.56	CCC	1	ARARGE3208U4
Bonte 2024 CER + 1.55%	T2X4	26/jul/2024	1.550	368,673.2	Semestral	460.50	-0.23	154.67	0.89	CCC	1	ARARGE320AI3
Boncer 2025	TC25	27/abr/2025	4.000	29,097.8	Semestral	1,390.00	2.38	157.28	1.57	CCC	1	ARARGE4505U2
Bonte 2025 CER +1.8%	TX25	09/nov/2025	1.800	48,154.1	Semestral	320.00	-7.04	147.86	2.22	CCC	2	ARARGE320C83
Bonte 2026 CER +2%	TX26	09/nov/2026	2.000	190,746.9	Semestral	528.00	3.14	158.04	2.08	CCC	1	ARARGE3209W8
Bonte 2028 CER+ 2.25%	TX28	09/nov/2028	2.250	75,904.8	Semestral	520.00	3.72	158.62	2.73	CCC	1	ARARGE3209X6
Discount ARS	DICP	31/dic/2033	5.830	10,472.5	Semestral	10,250.00	6.86	161.76	4.39	CCC	1	ARARGE03E121
Discount ARS	DIP0	31/dic/2033	5.830	125.5	Semestral	10,270.00	6.82	161.72	4.39	CCC	1	ARARGE03G696
UVP ARS	TVPP	15/dic/2035	-	86,214.7	-	1.28	-	-	-	CCC	1	ARARGE03E147
Par ARS Ley Arg	PARP	31/dic/2038	1.770	2,858.3	Semestral	5,190.00	10.53	165.43	9.39	CCC	1	US040114GK09
Par ARS Ley Arg	PAP0	31/dic/2038	1.770	11.2	Semestral	4,876.50	8.22	163.12	8.56	CCC	1	ARARGE03G712
Cuasipar ARS	CUAP	31/dic/2045	3.310	23,434.1	Semestral	6,920.00	7.71	162.61	11.22	CCC	1	ARARGE03E139

Expectativas de inflación (próx 12m): 154.90%



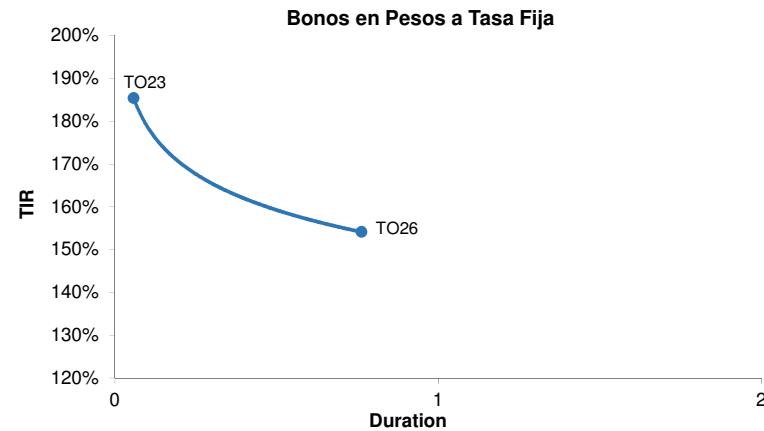
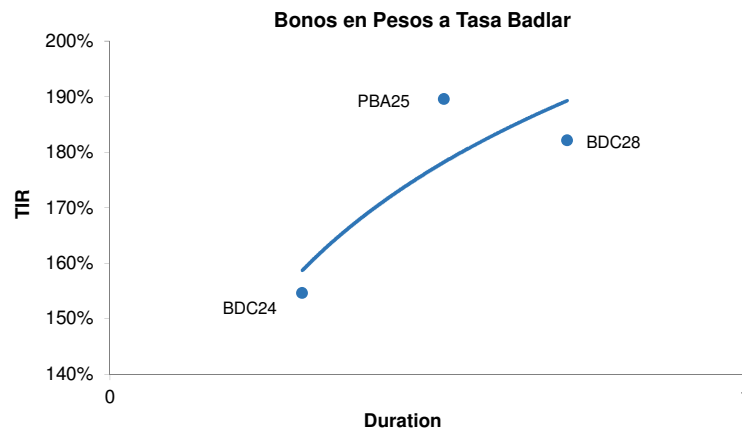


BONOS SOBERANOS Y PROVINCIALES EN PESOS

Precios en ARS (BYMA) - Datos Técnicos y Curvas

Especie	Ticker	Fecha Vencimiento	Cupón (%)	Monto Circulación (en M de ARS)	Frecuencia cupón	Precio al 05-sep-2023	Spread (%)	TIR (%)	Duration	Rating	Mínimo (V/N)	ISIN
BONOS EN PESOS: Tasa Badlar												
CABA Mar. 2024	BDC24	29/mar/2024	100.200	26,003.2	Trimestral	121.95		154.61	0.30	WR	1	ARCBAS3201F3
PBA 2025 B+375	PBA25	12/abr/2025	103.910	30,000.0	Trimestral	110.90		189.52	0.53	0.00	1	ARPBUE3205N8
CABA Feb. 2028	BDC28	22/feb/2028	115.380	30,809.9	Trimestral	102.85		182.08	0.72	AA(arg)	1	ARCBAS3201J5
BONOS EN PESOS: Tasa Fija												
Bonte 16% 2023	TO23	17/oct/2023	16.000	64,150.4	Trimestral	96.00		185.35	0.06	CCC	1	ARARGE4502J2
Bonte 15,5% 2026	TO26	17/oct/2026	15.500	96,569.7	Trimestral	23.45		154.12	0.76	CCC	1	ARARGE4502K0

BADLAR -Privados- (próx 12m): 97.000%

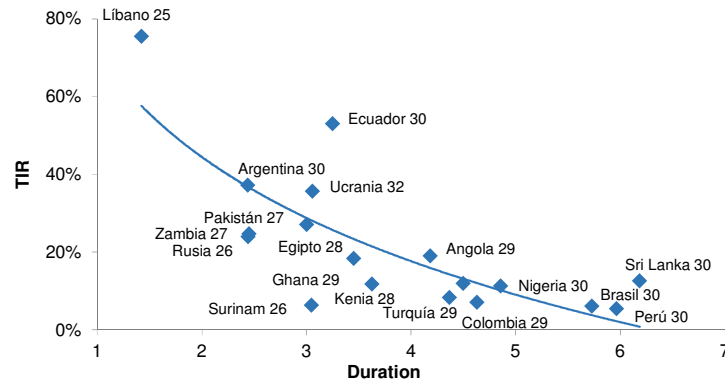




BONOS SOBERANOS EMERGENTES

Comparables a 10 años- Precios en USD - Datos Técnicos y Curva

Especie	Ticker (Refinitiv)	Fecha Vencimiento	Cupón (%)	Monto Circulación (en M de USD)	Frecuencia cupón	Precio al 05-sep-2023	TIR (%)	Duration	Rating	Mínimo (V/N)	ISIN
BONOS EN DÓLARES - Precios en USD (OTC en el exterior)											
Perú 2030	PERU	20/jun/2030	2.844	694.2	Semestral	85.67	5.39	5.96	A	1,000	US715638DA73
Colombia 2029	COLOMB	15/mar/2029	4.500	2,000.0	Semestral	88.46	7.06	4.63	BB+	200,000	US195325DP79
Brasil 2030	BRAZIL	12/jun/2030	3.875	3,500.0	Semestral	88.01	6.06	5.73	BB	200,000	US105756CC23
Ecuador 2030	ECUAD	15/ago/2030	10.000	193.5	Semestral	10.00	53.03	3.25	CCC+	1,000	XS0115743519
Argentina 2030	ARGENT	09/jul/2030	0.750	16,090.0	Semestral	32.62	37.23	2.44	CCC	1	US040114HS26
Kenia 2028	KENYA	28/feb/2028	7.250	1,000.0	Semestral	84.75	11.72	3.63	B3	200,000	US491798AG90
Egipto 2028	EGYPT	21/feb/2028	6.588	1,250.0	Semestral	65.18	18.36	3.45	B	200,000	US03846JW487
Turquía 2029	TURKEY	26/abr/2029	7.625	3,000.0	Semestral	96.98	8.30	4.37	BB	200,000	US900123CT57
Nigeria 2030	NGERIA	23/feb/2030	7.143	1,250.0	Semestral	81.53	11.24	4.86	Caa1	200,000	US65412JAD54
Pakistán 2027	PAKIST	05/dic/2027	6.875	1,500.0	Semestral	50.72	27.08	3.00	CCC	200,000	US740840AC76
Ucrania 2032	UKRAIN	25/sep/2034	7.375	3,000.0	Semestral	26.75	35.59	3.06	Ca	200,000	XS1577952952
Ghana 2029	GHANA	16/may/2029	7.625	1,000.0	Semestral	43.13	19.00	4.18	Caa3	200,000	US374422AG84
Angola 2029	ANGOLA	26/nov/2029	8.000	1,750.0	Semestral	83.13	11.91	4.50	B	200,000	US035198AD29
Sri Lanka 2030	SRILAN	28/mar/2030	7.550	1,500.0	Semestral	45.00	12.55	6.18	C	200,000	USY8137FAR92
Zambia	ZAMBIA	30/jul/2027	8.970	1,250.0	Semestral	51.89	24.67	2.45	Caa3	200,000	US988895AF56
Libano	BLIBA	20/dic/2025	6.550	105.0	Semestral	30.88	75.54	1.42	NULL	100,000	LBCU16003255
Surinam	SRNM	26/oct/2026	9.250	550.0	Semestral	82.25	6.32	3.05	WD	200,000	USP68788AA97
Rusia	RUSSIA	27/may/2026	4.750	3,000.0	Semestral	54.00	23.94	2.44	WR	200,000	RU000A0JWHB2





BONOS CORPORATIVOS EN DÓLARES

Precios en USD (OTC en el exterior) - Datos Técnicos y Curvas

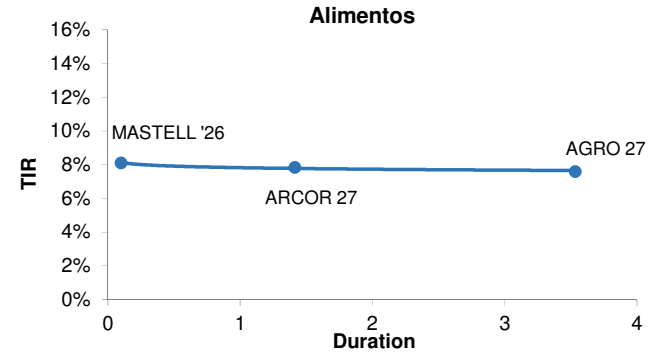
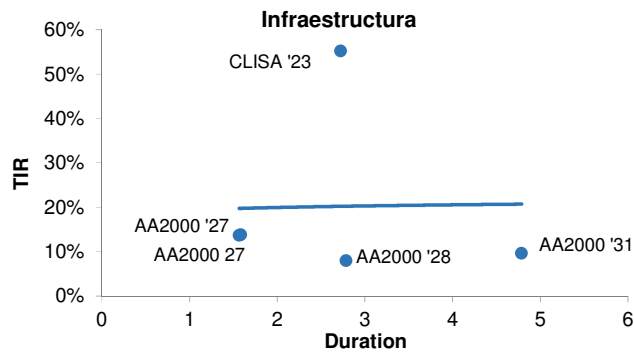
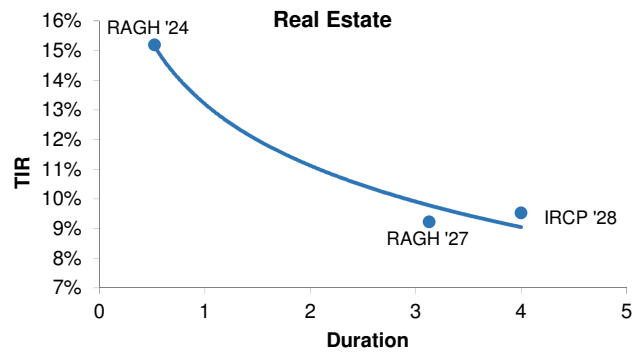
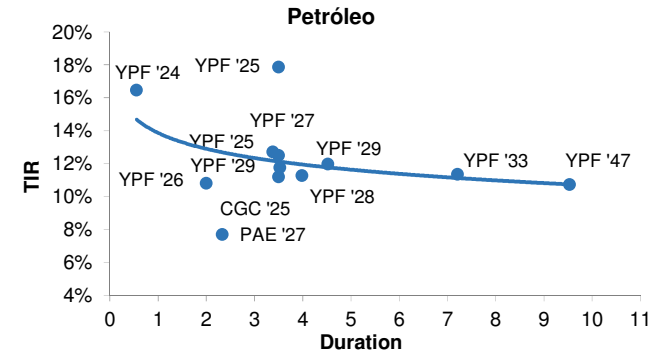
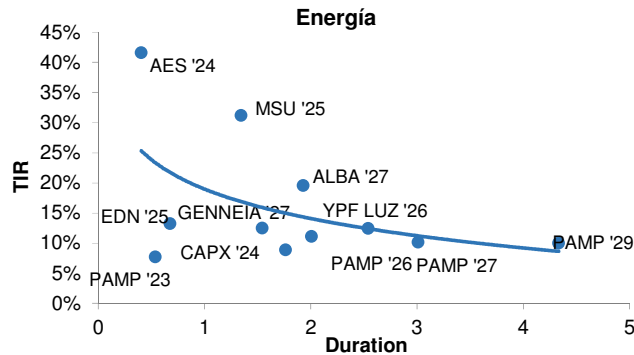
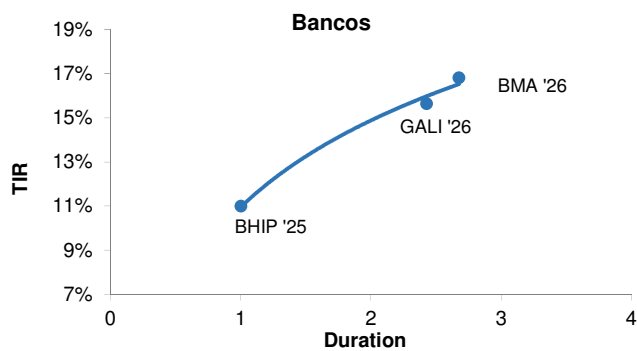
Especie	Ticker (Refinitiv)	Vencimiento	Cupón (%)	Precio al 05-sep-23	T.I.R.	Duration	Call (Si o No)	Fecha Call	Precio Call	Rating	Mínimo (V/N)	Código ISIN
BANCOS Y FINANCIERAS												
Banco Hipotecario	BHIP	14/oct/2025	9.750	98.75	11.00%	1.00	Y	-	-	Caa3	15,000	US05961AAH68
Banco de Galicia y Buenos Aires	GGALBN	19/jul/2026	11.266	93.75	15.64%	2.43	Y	-	-	Ca	200,000	USP0R66CAA64
Banco Macro	BMA	04/nov/2026	6.643	84.00	16.82%	2.68	Y	-	-	Ca	150,000	USP1047VAF42
ENERGÍA												
PAMPA ENERGIA	BPPAN	15/nov/2023	5.000	98.50	7.72%	0.54	Y	05/oct/2023	100.00	WD	150,000	US69784DAA63
AES ARGENTINA	AESAR	02/feb/2024	7.750	88.13	41.67%	0.41	Y	05/oct/2023	100.00	RR4	150,000	USP1000CAA29
CAPEX SA	CAPX	15/may/2024	6.875	95.88	13.27%	0.68	Y	15/sep/2023	100.00	RR3	1,000	USP20058AC08
RIO ENERGY SA	MSUEGM	01/feb/2025	6.875	73.88	31.24%	1.34	Y	05/oct/2023	101.72	Caa3	150,000	USP8S12UAA35
EDENOR	EDN	12/may/2025	9.750	95.88	12.52%	1.55	N	-	-	Caa3	150,000	US29244AAL61
YPF LUZ	YPFDA	25/jul/2026	10.000	94.13	12.48%	2.54	Y	05/oct/2023	105.00	Caa3	1,000	USP9897PAB06
PAMPA ENERGIA	PAMPX	08/dic/2026	9.500	101.13	8.92%	1.76	Y	08/dic/2024	104.50	RR3	1	US697660AD09
PAMPA ENERGIA	PAMPX	24/ene/2027	7.500	92.50	10.17%	3.01	Y	05/oct/2023	102.50	RR3	150,000	USP7464EAA49
GENNEIA	EMGSD	02/sep/2027	8.750	95.50	11.14%	2.01	Y	05/oct/2023	102.19	RR3	1,000	US372319AB97
Albanesi	ALBANG	01/dic/2027	9.875	83.00	19.60%	1.93	Y	01/dic/2023	104.81	RR3	1	US36875KAD37
PAMPA ENERGIA	PAMPX	15/abr/2029	9.125	96.13	10.04%	4.33	Y	15/abr/2024	104.56	B	150,000	USP7464EAB22
GAS (Generación, Transporte y Distribución)												
TRANSPORT DE GAS	TGSUB	02/may/2025	6.750	92.32	11.99%	1.56	Y	15/sep/2023	101.69	Caa3	150,000	USP9308RAZ66
PETRÓLEO												
YPF SOCIEDAD ANO	YPPD	04/abr/2024	8.750	95.88	16.48%	0.56	N	-	-	CCC-	1,000	US984245AK63
CIA GENERAL DE COMBUSTIBLES	LTNEXM	08/mar/2025	9.500	98.50	11.22%	3.50	-	-	-	-	1,000	US20448QAB68
YPF SOCIEDAD ANO	YPPD	23/mar/2025	8.500	93.50	17.88%	3.50	N	-	-	CCC-	1,000	US984245AT72
YPF SOCIEDAD ANO	YPPD	28/jul/2025	8.500	93.38	12.52%	3.50	N	-	-	CCC-	1,000	US984245AL47
YPF SOCIEDAD ANO	YPPD	12/feb/2026	9.000	98.00	10.83%	2.00	Y	-	-	Caa3	1	US984245AU46
PAN AMERICAN ENERGY	BPPAN	30/abr/2027	9.125	103.25	7.72%	2.33	N	-	-	AAA(arg)	1,000	USE7S78BAB82
YPF SOCIEDAD ANO	YPPD	21/jul/2027	6.950	82.75	12.72%	3.38	N	-	-	CCC-	10,000	US984245AQ34
YPF SOCIEDAD ANO	YPPD	02/nov/2028	10.000	95.00	11.30%	3.99	N	-	-	CCC-	1,000	US984245AF78
YPF SOCIEDAD ANO	YPPD	27/jun/2029	8.500	85.63	12.00%	4.52	Y	27/mar/2029	100.00	Caa3	10,000	US984245AS99
YPF SOCIEDAD ANO	YPPD	30/jun/2029	9.000	90.88	11.78%	3.53	Y	30/dic/2028	100.00	Caa3	1	US984245AV29
YPF SOCIEDAD ANO	YPPD	30/sep/2033	7.000	76.63	11.36%	7.21	Y	30/mar/2033	100.00	Caa3	1	US984245AW02
YPF SOCIEDAD ANO	YPPD	15/dic/2047	7.000	67.88	10.74%	9.53	Y	15/jun/2047	100.00	CCC-	10,000	US984245AR17
REAL ESTATE												
RAGHSA SA	RAGHS	21/mar/2024	7.250	96.00	15.20%	0.52	Y	05/oct/2023	100.00	Caa2	1,000	USP79849AC24
RAGHSA SA	RAGHS	04/may/2027	8.500	97.75	9.23%	3.13	Y	04/may/2024	104.25	Caa2	1,000	USP79849AD07
IRSA	IRSA	22/jun/2028	8.750	97.88	9.53%	4.00	N	-	-	B	1	USP58809BH95
INFRAESTRUCTURA												
AEROPUERTOS ARG	AERNT	01/feb/2027	9.375	93.75	13.75%	1.57	Y	10/oct/2023	102.58	Caa3	150,000	US00786PAD69
AEROPUERTOS ARG	AERNT	01/feb/2027	6.875	89.50	13.88%	1.58	Y	10/oct/2023	102.58	Caa3	150,000	USP0092MAE32
CIA LATINO AMER	CLISA	25/jul/2027	8.800	30.00	55.25%	2.72	N	-	-	CCC-	100	US20445PAH82
AEROPUERTOS ARG	AERNT	01/nov/2028	9.500	105.00	8.06%	2.79	Y	-	-	-	150,000	XS2405877007
AEROPUERTOS ARG	AERNT	01/ago/2031	8.500	94.93	9.71%	4.79	Y	01/feb/2026	104.25	Caa3	1,000	US00786PAE43



BONOS CORPORATIVOS EN DÓLARES

Precios en USD (OTC en el exterior) - Datos Técnicos y Curvas

Especie	Ticker (Refinitiv)	Vencimiento	Cupón (%)	Precio al 05-sep-23	T.I.R.	Duration	Call (Si o No)	Fecha Call	Precio Call	Rating	Mínimo (V/N)	Código ISIN
ALIMENTOS												
MASTELLONE HNOS	MASTO	30/jun/2026	10.950	108.10	8.11%	0.10	Y	20/sep/2023	105.48	B-	1	USP6460MAK01
ADECOAGRO SA	AGROZ	21/sep/2027	6.000	94.50	7.60%	3.54	Y	05/oct/2023	102.00	Ba2	150,000	USL00849AA47
ARCOR SAIC	GRUARA	09/oct/2027	8.250	101.00	7.85%	1.41	Y	09/abr/2024	104.13	B+	1,000	USP04559AW36
TELECOMUNICACIONES												
TELECOM ARGENTINA	TECOBT	06/ago/2025	8.500	97.00	10.84%	1.35	N	-	-	RR3	1,000	US879273AT79
TELECOM ARGENTINA	TECOBT	18/jul/2026	8.000	93.50	10.68%	2.58	Y	05/oct/2023	104.00	B	1,000	USP9028NAV30
CONSUMO MINORISTA												
ARCOS DORADOS HL	ARCO	27/sep/2023	6.625	99.50	14.84%	0.06	N	-	-	BB+	100,000	USG0457FAD99
ARCOS DORADOS HL	ARCO	04/abr/2027	5.875	96.85	6.88%	3.19	Y	05/oct/2023	101.96	BB+	100,000	US03965UAC45





BONOS CORPORATIVOS EN DÓLARES

Precios en ARS (ByMA) - Datos Técnicos

Especie	Ticker (Refinitiv)	Fecha de Vencimiento	Monto en circulación (en M de USD)	Cupón (%)	Precio al 05-sep-2023	T.I.R.	Duration	Rating	Mínimo (V/N)	Sector	Código ISIN
BONOS EN DÓLARES (LEGISLACIÓN EXTRANJERA)											
PAN AMERICAN ENERGY	PNC90	15-nov-2023	14.85	5.000	54,700.00	-	-	WD	150,000	Oil and Gas	USE7S78BAA00
RAGHSA	RA310	21-mar-2024	91.89	7.250	79,350.00	15.20%	0.49	Caa2	1,000	Service - Other	USP79849AC24
YPF	YPCUO	04-abr-2024	346.31	8.750	30,200.00	16.48%	0.51	CCC-	1,000	Oil and Gas	US984245AK63
CAPEX	CAC20	15-may-2024	300.00	6.875	78,100.00	13.27%	0.63	AA-(arg)	1,000	Utility - Other	US139612AE59
CIA GRAL COMBUSTIBLES	CP170	08-mar-2025	143.94	9.500	57,200.00	11.22%	0.83	-	1,000	Chemicals	USP3063DAB84
EDENOR	DNC10	12-may-2025	52.71	9.750	50,800.00	12.52%	1.45	Caa3	2,000	Utility - Other	USP3710FAM60
PAN AMERICAN ENERGY	PNMCO	21-jul-2025	105.15	7.250	55,850.00	-	-	BB-	1,000	Oil and Gas	XS2502495786
YPF	YCA60	28-jul-2025	1,131.77	8.500	73,800.00	12.52%	1.67	CCC-	1,000	Oil and Gas	US984245AL47
TELECOM ARGENTINA	TLC50	06-ago-2025	260.54	8.500	50,100.00	10.84%	1.28	B	1,000	Telecommunications	USP9028NAZ44
YPF	YMCHO	12-feb-2026	596.76	9.000	58,450.00	10.69%	1.15	Caa3	1	Oil and Gas	USP989MJBR17
MASTELLONE HNOS	MTCGO	30-jun-2026	110.87	10.950	77,800.00	-	-	B-	1	Food Processors	USP6460MAK01
TELECOM ARGENTINA	TLC10	18-jul-2026	400.00	8.000	72,750.00	10.68%	2.45	B	1,000	Telecommunications	USP9028NAV30
PAMPA ENERGIA	MGC90	08-dic-2026	292.80	9.500	79,500.00	8.92%	1.94	B	1	Utility - Other	USP7464EAH91
PAN AMERICAN ENERGY	PNDCO	30-abr-2027	300.00	9.125	81,200.00	7.72%	2.24	AAA(arg)	1,000	Oil and Gas	USE7S78BAB82
RAGHSA	RAC40	04-may-2027	58.34	8.500	77,972.00	9.23%	2.99	Caa2	1,000	Service - Other	USP79849AD07
CLISA	CLSIO	25-jul-2027	343.45	8.800	22,825.00	55.25%	2.12	CCC-	100	Building Products	USP3063XAJ74
GENNEIA	GNCXO	02-sep-2027	292.89	8.750	58,500.00	11.14%	1.90	CCC	1,000	Oil and Gas	USP46756BA25
ARCOR	RCCJO	09-oct-2027	265.43	8.250	84,698.00	7.85%	2.42	B+	1,000	Consumer Products	USP04559AW36
GENERACIÓN MEDITERRÁNEA	MRCOA	01-dic-2027	296.11	9.875	64,599.00	19.60%	1.75	CCC	1	Financial - Other	USP46214AC95
PAMPA ENERGIA	MGC3X	15-abr-2029	292.53	9.125	59,350.00	10.04%	4.12	B	150,000	Utility - Other	USP7464EAB22
YPF	YMCIO	30-jun-2029	747.83	9.000	72,649.00	11.78%	3.33	Caa3	1	Oil and Gas	USP989MJSB99
RAGHSA	RAC50	24-abr-2030	56.78	8.250	76,100.00	7.28%	4.95	-	1,000	Service - Other	USP79849AE89
ARCOR	ARC10	01-ago-2031	208.95	8.500	74,300.00	9.66%	4.31	Caa3	1,000	Service - Other	USP0092MAJ29
YPF	YMCJO	30-sep-2033	575.65	7.000	62,000.00	11.36%	5.65	Caa3	1	Oil and Gas	USP989MJBT72
BONOS EN DÓLARES (LEGISLACIÓN ARGENTINA)											
JOHNDEERE	HJC80	07-oct-2023	13.14	5.500	47,470.00	-	-	AA(arg)	1	Leasing	ARJDCC5600N9
IRSA	IRC80	12-nov-2023	10.77	10.000	26,100.00	30.75%	0.17	AA(arg)	1	Financial - Other	ARIRSA5600F7
CRESUD	CSJXO	12-nov-2023	0.45	9.000	16,545.82	-	-	AA(arg)	1	Food Processors	ARCRES5600H8
JOHN DEERE	HJC60	18-dic-2023	18.00	9.500	11,347.00	-	-	AA(arg)	1	Leasing	ARJDCC5600L3
MSU ENERGY	RUC30	21-dic-2023	30.30	7.350	75,175.00	-	-	A+(arg)	1	Utility - Other	ARMSUE560067
GENERACIÓN MEDITERRÁNEA	MRCEO	10-ene-2024	14.07	7.500	75,200.00	-	-	A(arg)	1	Financial - Other	ARGMCT5600B5
VISTA ENERGY	VSC30	21-feb-2024	9.49	3.500	71,010.00	-	-	AA+(arg)	1	Oilfield Machinery and Services	AROILG560033
CIA GRAL COMBUSTIBLES	CP250	25-feb-2024	11.29	3.250	73,500.00	-	-	AA-(arg)	1	Chemicals	ARCOCO5600Q5
ALUAR	LMS10	09-abr-2024	37.55	6.700	19,800.00	-1.39%	0.34	AAA(arg)	1	Metals/Mining	ARALUA560013
TARJETA NARANJA	TN520	30-abr-2024	7.50	5.000	28,505.18	-	-	AA-(arg)	1	Service - Other	ARTANA5600Z9
MSU ENERGY	RUC40	20-may-2024	15.20	7.500	76,500.00	-	-	A+(arg)	1	Utility - Other	ARMSUE560075
CRESUD	CS340	30-jun-2024	11.91	6.990	26,851.00	-	-	AA+(arg)	1	Food Processors	ARCRES5600R7
CRESUD	CSKZO	06-jul-2024	6.39	6.990	29,297.00	-	-	AA+(arg)	1	Food Processors	ARCRES5600Q9
GENERACIÓN MEDITERRÁNEA	MRCFO	18-jul-2024	5.86	9.500	73,000.00	-	-	A(arg)	1	Financial - Other	ARGMCT5600D1
MSU ENERGY	RUC50	22-jul-2024	15.10	8.000	71,102.00	-	-	A+(arg)	1	Utility - Other	ARMSUE560083
VISTA ENERGY	VSCEO	08-ago-2024	43.50	6.000	72,800.00	-	-	AAA(arg)	1	Oilfield Machinery and Services	AROILG5600D1
MSU	MSSAO	12-sep-2024	24.50	7.500	76,500.00	-	-	A+(arg)	1	Consumer Products	ARMSUS5600C2
MSU ENERGY	RUC60	02-nov-2024	45.54	9.000	78,500.00	-	-	A+(arg)	1	Utility - Other	ARMSUE560091
GENERACIÓN MEDITERRÁNEA	MRCIO	07-nov-2024	11.49	9.500	76,000.00	-	-	A(arg)	1	Financial - Other	ARGMCT5600G4
EDENOR	DNC20	22-nov-2024	60.00	9.750	73,600.00	-	-	A-(arg)	1	Utility - Other	ARENOR560040
MSU ENERGY	RUC70	12-ene-2025	15.10	7.500	75,400.00	-	-	A+(arg)	1	Utility - Other	ARMSUE5600A6
VISTA ENERGY	VSCGO	20-ene-2025	13.50	4.000	53,825.00	-	-	AAA(arg)	1	Oilfield Machinery and Services	AROILG5600F6
CRESUD	CS370	15-mar-2025	24.39	5.500	49,000.00	-	-	AA+(arg)	1	Food Processors	ARCRES5600U1
IRSA	IRCGO	25-mar-2025	61.75	8.000	73,300.00	-	-	AA+(arg)	1	Financial - Other	ARIRSA5600V4
CELULOSA ARGENTINA	CRCEO	04-jun-2025	30.09	10.000	35,382.00	-2.67%	1.06	BBB-(arg)	1	Industrials - Other	ARCELU5600B0
AES ARGENTINA GENERACIÓN	AEC10	14-jul-2025	30.51	8.000	73,480.00	-	-	-	1	Utility - Other	ARAESA560065
GENNEIA	GN400	14-jul-2025	10.87	5.500	70,000.00	6.68%	1.73	-	1	Oil and Gas	AREMGA5600S5
VISTA ENERGY	VSCLO	20-jul-2025	13.50	4.500	64,491.03	-	-	AAA(arg)	1	Oilfield Machinery and Services	AROILG5600K6
IRSA	IRCHO	25-jul-2025	28.25	7.000	73,500.00	-	-	AA+(arg)	1	Financial - Other	ARIRSA5600U6



BONOS CORPORATIVOS EN DÓLARES

Precios en ARS (ByMA) - Datos Técnicos

Especie	Ticker (Refinitiv)	Fecha de Vencimiento	Monto en circulación (en M de USD)	Cupón (%)	Precio al 05-sep-2023	T.I.R.	Duration	Rating	Mínimo (V/N)	Sector	Código ISIN
GENERACIÓN MEDITERRÁNEA	MRCLO	27-jul-2025	19.36	9.500	72,480.00	-	-	A(arg)	1	Financial - Other	ARGMCT5600J8
PAMPA ENERGIA	MGCHO	04-nov-2025	55.74	4.990	74,450.00	-	-	AA+(arg)	1	Utility - Other	ARPAMP5600I3
VISTA ENERGY	VSCFO	10-nov-2025	40.51	6.250	79,000.00	-	-	AAA(arg)	1	Oilfield Machinery and Services	AROILG5600E9
ARCOR	RCCMO	22-nov-2025	77.00	3.500	73,000.00	5.45%	2.07	AAA(arg)	1	Consumer Products	ARARCS5600I4
IRSA	IRCIO	07-dic-2025	25.00	5.000	70,500.00	-	-	AA+(arg)	1	Financial - Other	ARIRSA5600W2
CIA GRAL COMBUSTIBLES	CP32O	09-dic-2025	12.90	6.000	68,650.00	-	-	AA-(arg)	1	Chemicals	ARCGCO5600X1
LOMA NEGRA	LOC2O	21-dic-2025	71.72	6.500	69,401.00	-	-	AAA(arg)	1	Building Products	ARLOMA560041
GENERACIÓN MEDITERRÁNEA	MRCOO	20-ene-2026	9.16	9.500	72,305.00	-	-	-	1	Financial - Other	ARGMCT5600L4
YPF	YMCQO	13-feb-2026	263.00	5.000	68,000.00	10.29%	2.17	AAA(arg)	1	Oil and Gas	ARYPFS5601W0
CRESUD	CS38O	03-mar-2026	70.57	8.000	75,845.00	-	-	AA+(arg)	1	Food Processors	ARCRES5600V9
MSU	MSSEO	17-jul-2026	25.00	6.500	71,000.00	-	-	-	1	Consumer Products	ARMSUS5600F5
BONOS EN DÓLARES (DOLLAR LINKED)											
AEROPUERTOS ARGENTINA 2000	AER3O	08-sep-2023	0.00	4.000	24,000.00	-	-	AA(arg)	1	Service - Other	ARAEAR560058
FUTUROS Y OPCIONES	FOS1O	22-oct-2023	12.31	0.000	22,887.00	-	-	AA-(arg)	1	Service - Other	ARFUOP5600I8
PETROQUIMICA COMODORO RIVADAVIA	PQCAO	27-oct-2023	30.37	4.000	36,400.00	-	-	AA-(arg)	1	Chemicals	ARPETQ560085
MASTELLONE HNOS	MTCHO	25-dic-2023	11.88	5.500	21,000.00	-	-	-	1	Food Processors	ARMAST560023
SAN MIGUEL	SNS7O	18-ene-2024	50.00	4.000	38,000.00	-	-	A-(arg)	1	Financial - Other	ARSMIG5600D0
SAN MIGUEL	SN5BO	19-feb-2024	45.00	4.990	36,731.00	-	-	A-(arg)	1	Financial - Other	ARSMIG5600B4
VISTA ENERGY	VSC7O	10-mar-2024	0.00	4.250	26,600.00	-	-	AAA(arg)	1	Oilfield Machinery and Services	AROILG560074
PETROQUIMICA COMODORO RIVADAVIA	PQCEO	15-mar-2024	32.68	4.750	17,200.00	-	-	AA-(arg)	1	Chemicals	ARPETQ5600B3
GENNEIA	GN34O	10-ago-2024	7.80	6.000	39,990.00	-	-	A+(arg)	1	Oil and Gas	AREMGA5600J4
CIA GRAL COMBUSTIBLES	CP24O	25-ago-2024	0.00	1.375	11,046.72	-	-	AA-(arg)	1	Chemicals	ARCGCO5600P7
IRSA	IRCEO	26-ago-2024	29.06	3.900	40,000.00	-	-	AA+(arg)	1	Financial - Other	ARIRSA5600R2
PAN AMERICAN ENERGY	PN5CO	03-sep-2024	123.69	3.000	34,835.35	-	-	AAA(arg)	1	Oil and Gas	ARAXIO5600B3
GENERACIÓN MEDITERRÁNEA	MRCJO	07-nov-2024	21.11	3.750	38,000.00	-	-	A(arg)	1	Financial - Other	ARGMCT5600H2
SAN MIGUEL	SNS8O	28-nov-2024	50.00	3.500	35,710.00	-	-	A-(arg)	1	Financial - Other	ARSMIG5600E8
VISTA ENERGY	VSC6O	04-dic-2024	10.00	3.240	45,213.02	-	-	AAA(arg)	1	Oilfield Machinery and Services	AROILG560066
GENNEIA	GN35O	23-dic-2024	38.18	0.000	18,250.00	-	-	A+(arg)	1	Oil and Gas	AREMGA5600N6
HIDROTEC	HC11P	14-feb-2025	3.95	0.000	-	-	-	-	1	Machinery	ARHIDR560039
CIA GRAL COMBUSTIBLES	CP30O	10-mar-2025	150.00	0.000	40,500.00	-	-	AA-(arg)	1	Chemicals	ARCGCO5600V5
GENERACIÓN MEDITERRÁNEA	MRCMO	17-abr-2025	25.94	5.500	36,800.00	-	-	A(arg)	1	Financial - Other	ARGMCT5600K6
YPF	YMCOO	25-abr-2025	147.39	0.000	55,555.00	-72.10%	2.43	AAA(arg)	1	Oil and Gas	ARYPFS5601U4
SAN MIGUEL	SNS9O	26-jun-2025	55.00	5.000	35,859.00	-	-	A-(arg)	1	Financial - Other	ARSMIG5600F5
AEROPUERTOS ARGENTINA 2000	AER7O	08-jul-2025	20.00	0.000	19,192.00	-	-	-	1	Service - Other	ARAEAR5600B3
GENERACIÓN MEDITERRÁNEA	MRCGO	18-jul-2025	26.28	3.500	34,299.50	-	-	A(arg)	1	Financial - Other	ARGMCT5600E9
GENERACIÓN MEDITERRÁNEA	MRCPO	20-jul-2025	15.33	5.000	36,060.00	-	-	-	1	Financial - Other	ARGMCT5600M2
FUTUROS Y OPCIONES	FOS2O	25-jul-2025	15.00	0.000	28,700.00	-	-	AA-(arg)	1	Service - Other	ARFUOP560026
ALUAR	LMS4O	07-sep-2025	58.54	0.000	23,320.00	-	-	AAA(arg)	1	Metals/Mining	ARALUA560039
PAN AMERICAN ENERGY	PN7CO	19-nov-2025	100.00	4.750	49,500.00	-	-	AAA(arg)	1	Oil and Gas	ARAXIO5600E7
YPF	YMCMO	10-ene-2026	230.00	1.000	38,347.00	-52.77%	3.09	AAA(arg)	1	Oil and Gas	ARYPFS5601S8
OLEODUCTOS DEL VALLE	OLC1O	18-abr-2026	71.16	0.000	30,290.00	-	-	AAA(arg)	1	Gas Utility - Pipelines	AROLDV5600I3
CIA GRAL COMBUSTIBLES	CP31O	09-jun-2026	52.38	0.000	36,000.00	-	-	AA-(arg)	1	Chemicals	ARCGCO5600W3
SCC POWER	SPC1O	27-jun-2026	33.50	4.000	26,080.00	-	-	A-(arg)	1	Utility - Other	ARSPIE5600I1
AEROPUERTOS ARGENTINA 2000	AER9O	19-ago-2026	30.95	0.000	21,715.00	-	-	-	1	Service - Other	ARAEAR5600C1
CIA GRAL COMBUSTIBLES	CP28O	07-sep-2026	80.00	0.000	36,500.00	-	-	AA-(arg)	1	Chemicals	ARCGCO5600T9
CRESUD	CS40O	21-dic-2026	38.21	0.000	21,049.00	-	-	AA+(arg)	1	Food Processors	ARCRES5600X5
VISTA ENERGY	VSCJO	03-mar-2027	118.54	0.000	37,000.00	-	-	AAA(arg)	1	Oilfield Machinery and Services	AROILG5600I0
TELECOM ARGENTINA	TLCFO	10-feb-2028	62.39	1.000	33,828.63	-	-	AA+(arg)	100	Telecommunications	ARTECO5600G5
PAN AMERICAN ENERGY	PNRCO	07-ago-2028	60.00	1.000	-	-	-	AAA(arg)	1	Oil and Gas	ARAXIO5600X7
PAN AMERICAN ENERGY	PNICO	07-feb-2032	80.00	4.250	29,852.91	-	-	AAA(arg)	1	Oil and Gas	ARAXIO5600Q1



BONOS CORPORATIVOS EN DÓLARES

Precios en USD (ByMA) - Datos Técnicos

Especie	Ticker (Refinitiv)	Fecha de Vencimiento	Monto en circulación (en M de USD)	Cupón (%)	Precio al 05-sep-2023	T.I.R.	Duration	Rating	Mínimo (V/N)	Sector	Código ISIN
BONOS EN DÓLARES (LEGISLACIÓN EXTRANJERA)											
PAN AMERICAN ENERGY	PNC9D	15-nov-2023	14.85	5.000	105.00	-	-	WD	150,000	Oil and Gas	USE7S78BAA00
YPF	YPCUD	04-abr-2024	346.31	8.750	42.70	16.48%	0.51	CCC-	1,000	Oil and Gas	USP989MJAY76
CAPEX	CAC2D	15-may-2024	300.00	6.875	108.00	13.27%	0.63	RR3	1,000	Utility - Other	USP20058AC08
CIA GRAL COMBUSTIBLES	CP17D	08-mar-2025	143.94	9.500	80.70	11.22%	0.83	-	1,000	Chemicals	USP3063DAB84
EDENOR	DNC1D	12-may-2025	52.71	9.750	94.50	12.52%	1.45	Caa3	2,000	Utility - Other	USP3710FAM60
YPF	YCA6D	28-jul-2025	1,131.77	8.500	-	12.52%	1.67	CCC-	1,000	Oil and Gas	USP989MJBEO4
TELECOM ARGENTINA	TLC5D	06-ago-2025	260.54	8.500	69.50	10.84%	1.28	B	1,000	Telecommunications	USP9028NAZ44
BANCO HIPOTECARIO	HBC4D	14-oct-2025	47.00	9.750	62.00	11.00%	0.95	Caa3	15,000	Banking	US05961AAH68
YPF	YMCHD	12-feb-2026	596.76	9.000	83.00	10.69%	1.15	Caa3	1	Oil and Gas	USP989MJBR17
MASTELLONE HNOS	MTCGD	30-jun-2026	110.87	10.950	109.00	-	-	B-	1	Food Processors	USP6460MAK01
TELECOM ARGENTINA	TLC1D	18-jul-2026	400.00	8.000	102.00	10.68%	2.45	B	1,000	Telecommunications	USP9028NAV30
PAMPA ENERGÍA	MGC9D	08-dic-2026	292.80	9.500	112.00	8.92%	1.94	B	1	Utility - Other	USP7464EAH91
PAN AMERICAN ENERGY	PNDCD	30-abr-2027	300.00	9.125	118.00	7.72%	2.24	AAA(arg)	1,000	Oil and Gas	USE7S78BAB82
RAGHSA	RAC4D	04-may-2027	58.34	8.500	107.00	9.23%	2.99	Caa2	1,000	Service - Other	USP79849AD07
CLISA	CLSID	25-jul-2027	343.45	8.800	32.35	55.25%	2.12	CCC-	100	Building Products	USP3063XAJ74
GENNEIA	GNCXD	02-sep-2027	292.89	8.750	83.00	11.14%	1.90	CCC	1,000	Oil and Gas	USP46756BA25
ARCOR	RCCJD	09-oct-2027	265.43	8.250	112.00	7.85%	2.42	B+	1,000	Consumer Products	USP04559AW36
GENERACIÓN MEDITERRÁNEA	MRCAD	01-dic-2027	296.11	9.875	91.65	19.60%	1.75	CCC	1	Financial - Other	USP46214AC95
IRSA	IRCFD	22-jun-2028	171.20	8.750	106.20	9.53%	2.68	B	1	Financial - Other	USP58809BH95
AEROPUERTOS ARGENTINA 2000	AER4D	01-nov-2028	62.02	9.500	-	-	-	-	150,000	Service - Other	XS2405877007
PAMPA ENERGÍA	MGC3Z	15-abr-2029	292.53	9.125	100.00	10.04%	4.12	B	150,000	Utility - Other	USP7464EAB22
YPF	YMCID	30-jun-2029	747.83	9.000	101.90	11.78%	3.33	Caa3	1	Oil and Gas	USP989MJB599
ARCOR	ARC1D	01-ago-2031	208.95	8.500	105.00	9.66%	4.31	Caa3	1,000	Service - Other	USP0092MAJ29
YPF	YMCJD	30-sep-2033	575.65	7.000	91.99	11.36%	5.65	Caa3	1	Oil and Gas	USP989MJBT72
BONOS EN DÓLARES (LEGISLACIÓN ARGENTINA)											
JOHN DEERE	HJC8D	07-oct-2023	13.14	5.500	-	-	-	AA(arg)	1	Leasing	ARJDCC5600N9
IRSA	IRC8D	12-nov-2023	10.77	10.000	36.00	30.75%	0.17	AA(arg)	1	Financial - Other	ARIRSA5600F7
CRESUD	CSJXD	12-nov-2023	0.45	9.000	34.23	-	-	AA(arg)	1	Food Processors	ARCRES5600H8
JOHN DEERE	HJC6D	18-dic-2023	18.00	9.500	24.00	-	-	AA(arg)	1	Leasing	ARJDCC5600L3
MSU ENERGY	RUC3D	21-dic-2023	30.30	7.350	105.25	-	-	A+(arg)	1	Utility - Other	ARMSUE560067
GENERACIÓN MEDITERRÁNEA	MRECD	10-ene-2024	14.07	7.500	105.45	-	-	A(arg)	1	Financial - Other	ARGMCT5600B5
VISTA ENERGY	VSC3D	21-feb-2024	9.49	3.500	117.50	-	-	AA+(arg)	1	Oilfield Machinery and Services	AROILG560033
CIA GRAL COMBUSTIBLES	CP25D	25-feb-2024	11.29	3.250	104.00	-	-	AA-(arg)	1	Chemicals	ARGCGO5600Q5
JOHN DEERE	HJC9D	16-mar-2024	10.00	3.000	97.44	-	-	AA(arg)	1	Leasing	ARJDCC5600P4
ALUAR	LMS1D	09-abr-2024	37.55	6.700	28.72	-1.39%	0.34	AAA(arg)	1	Metals/Mining	ARALUA560013
TARJETA NARANJA	TN52D	30-abr-2024	7.50	5.000	100.00	-	-	AA-(arg)	1	Service - Other	ARTANA5600Z9
MSU ENERGY	RUC4D	20-may-2024	15.20	7.500	107.00	-	-	A+(arg)	1	Utility - Other	ARMSUE560075
JOHN DEERE	HJC7D	25-jun-2024	12.55	8.000	42.50	-	-	AA(arg)	1	Leasing	ARJDCC5600M1
CRESUD	CS34D	30-jun-2024	11.91	6.990	38.80	-	-	AA+(arg)	1	Food Processors	ARCRES5600R7
CRESUD	CSKZD	06-jul-2024	6.39	6.990	37.00	-	-	AA+(arg)	1	Food Processors	ARCRES5600Q9
GENERACIÓN MEDITERRÁNEA	MRFCD	18-jul-2024	5.86	9.500	105.00	-	-	A(arg)	1	Financial - Other	ARGMCT5600D1
MSU ENERGY	RUC5D	22-jul-2024	15.10	8.000	102.00	-	-	A+(arg)	1	Utility - Other	ARMSUE560083
VISTA ENERGY	VSCED	08-ago-2024	43.50	6.000	102.00	-	-	AAA(arg)	1	Oilfield Machinery and Services	AROILG5600D1
MSU	MSSAD	12-sep-2024	24.50	7.500	107.00	-	-	A+(arg)	1	Consumer Products	ARMSUS5600C2
MSU ENERGY	RUC6D	02-nov-2024	45.54	9.000	110.00	-	-	A+(arg)	1	Utility - Other	ARMSUE560091
GENERACIÓN MEDITERRÁNEA	MRCID	07-nov-2024	11.49	9.500	104.00	-	-	A(arg)	1	Financial - Other	ARGMCT5600G4
EDENOR	DNC2D	22-nov-2024	60.00	9.750	102.90	-	-	A-(arg)	1	Utility - Other	ARENOR560040
MSU ENERGY	RUC7D	12-ene-2025	15.10	7.500	105.80	-	-	A+(arg)	1	Utility - Other	ARMSUE5600A6
CRESUD	CS37D	15-mar-2025	24.39	5.500	95.00	-	-	AA+(arg)	1	Food Processors	ARCRES5600U1
IRSA	IRCGD	25-mar-2025	61.75	8.000	103.90	-	-	AA+(arg)	1	Financial - Other	ARIRSA5600V4
CELULOSA ARGENTINA	CRCD	04-jun-2025	30.09	10.000	51.99	-2.67%	1.06	BBB-(arg)	1	Industrials - Other	ARCELU5600B0
AES ARGENTINA GENERACION	AEC1D	14-jul-2025	10.87	5.500	101.60	6.68%	1.73	-	1	Oil and Gas	AREMGA5600S5
GENNEIA	GN40D	14-jul-2025	10.87	5.500	99.00	6.68%	1.73	-	1	Oil and Gas	AREMGA5600S5
IRSA	IRCHD	25-jul-2025	28.25	7.000	104.35	-	-	AA+(arg)	1	Financial - Other	ARIRSA5600U6



BONOS CORPORATIVOS EN DÓLARES

Precios en USD (ByMA) - Datos Técnicos

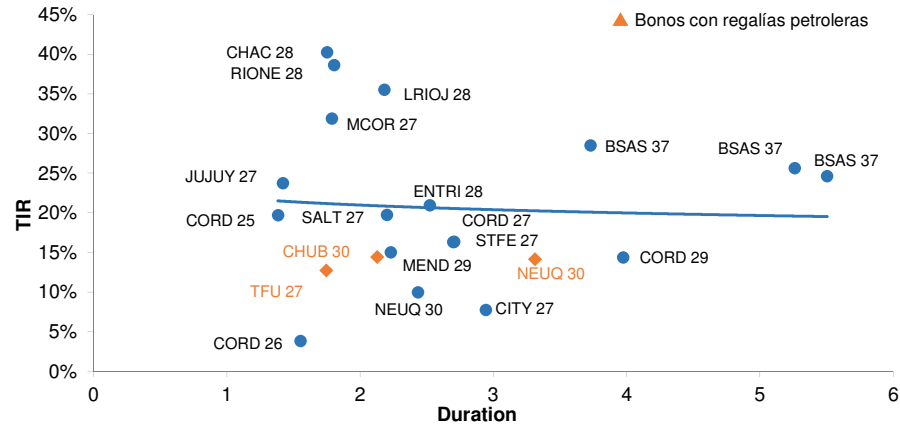
Especie	Ticker (Refinitiv)	Fecha de Vencimiento	Monto en circulación (en M de USD)	Cupón (%)	Precio al 05-sep-2023	T.I.R.	Duration	Rating	Mínimo (V/N)	Sector	Código ISIN
MERANOL	MRCLD	27-jul-2025	19.36	9.500	102.35	-	-	A(arg)	1	Financial - Other	ARGMCT5600J8
PAMPA ENERGIA	MGCHD	04-nov-2025	55.74	4.990	105.00	-	-	AA+(arg)	1	Utility - Other	ARPAMP5600I3
VISTA ENERGY	VSCFD	10-nov-2025	40.51	6.250	118.95	-	-	AAA(arg)	1	Oilfield Machinery and Services	AROILG5600E9
ARCOR	RCCMD	22-nov-2025	77.00	3.500	103.00	5.45%	2.07	AAA(arg)	1	Consumer Products	ARARCS5600I4
IRSA	IRCID	07-dic-2025	25.00	5.000	97.00	-	-	AA+(arg)	1	Financial - Other	ARIRSA5600W2
CIA GRAL COMBUSTIBLES	CP32D	09-dic-2025	12.90	6.000	98.00	-	-	AA-(arg)	1	Chemicals	ARCGCO5600X1
LOMA NEGRA	LOC2D	21-dic-2025	71.72	6.500	102.50	-	-	AAA(arg)	1	Building Products	ARLOMA560041
GENERACIÓN MEDITERRÁNEA	MROCD	20-ene-2026	9.16	9.500	99.50	-	-	-	1	Financial - Other	ARGMCT5600L4
YPF	YMCQD	13-feb-2026	263.00	5.000	94.90	10.29%	2.17	AAA(arg)	1	Oil and Gas	ARYPFS5601W0
CRESUD	CS38D	03-mar-2026	70.57	8.000	106.90	-	-	AA+(arg)	1	Food Processors	ARCRES5600V9
MSU	MSED	17-jul-2026	25.00	6.500	95.05	-	-	-	1	Consumer Products	ARMSUS5600F5
BONOS EN DÓLARES (DOLLAR LINKED)											
PETROQUIMICA COMODORO RIVADAVIA	PQCAD	27-oct-2023	30.37	4.000	-	-	-	AA-(arg)	1	Chemicals	ARPETQ560085
MASTELLONE HNOS	MTCHD	25-dic-2023	11.88	5.500	-	-	-	-	1	Food Processors	ARMAST560023
PAMPA ENERGIA	MGCGD	11-jul-2024	18,263.73	84.835	0.15	45.71%	0.10	AA+(arg)	1,000	Utility - Other	ARPAMP5600H5
NEWSAN	WNCHD	21-jul-2024	1,774.36	-	0.14	-	-	-	1	Electronics	ARNEWS5600J1
GENNEIA	GN34D	10-ago-2024	7.80	6.000	53.50	-	-	A+(arg)	1	Oil and Gas	AREMGA5600J4
IRSA	IRCED	26-ago-2024	29.06	3.900	72.50	-	-	AA+(arg)	1	Financial - Other	ARIRSA5600R2
VISTA ENERGY	VSCJD	03-mar-2027	118.54	0.000	51.19	-	-	AAA(arg)	1	Oilfield Machinery and Services	AROILG5600I0



BONOS PROVINCIALES EN DÓLARES

Precios en USD (OTC en el exterior) - Datos Técnicos y Curva

Especie	Ticker (Refinitiv)	Vencimiento	Cupón (%)	Precio al 05-sep-23	T.I.R. (%)	Duration	Rating	Mínimo (V/N)	Código ISIN
Provincia de Córdoba	CORDO	10/dic/2025	6.875	84.00	19.71%	1.39	Ca	150,000	US74408DAC83
Provincia de Córdoba	CORDO	27/oct/2026	7.125	43.03	3.85%	1.55	-	1	ARPCDB320099
Provincia de Jujuy	JUUJY	20/mar/2027	8.375	80.00	23.77%	1.42	-	150,000	XS1686882298
Provincia de Tierra del Fuego	TFU	17/abr/2027	8.950	94.00	12.69%	1.75	Ca	1,000	US886516AC70
Provincia de Córdoba	CORDO	01/jun/2027	6.990	78.00	16.37%	2.71	Ca	150,000	USP79171AE79
Ciudad de Buenos Aires	BCITY	01/jun/2027	7.500	94.25	9.97%	2.44	-	-	XS1422866456
Municipalidad de Córdoba	COROA	29/sep/2027	6.250	63.50	31.93%	1.79	Ca	150,000	XS1496112407
Provincia de Santa Fe	STAFE	01/nov/2027	6.900	77.69	16.35%	2.70	Ca	150,000	US74409AAA79
Provincia de Salta	SALTA	01/dic/2027	8.500	78.00	19.76%	2.20	CC	25,000	US795751AB29
Provincia del Chaco	CHACO	18/feb/2028	6.500	57.29	38.67%	1.81	CC	150,000	US157223AA64
Provincia de La Rioja	LARIJ	24/feb/2028	6.500	54.88	35.54%	2.18	CC	150,000	USP6S52BAA07
Provincia de Río Negro	RIONE	10/mar/2028	6.625	53.88	40.29%	1.75	-	150,000	US744086AA73
Provincia de Entre Ríos	ENTRI	08/ago/2028	8.250	72.50	20.99%	2.52	WD	1	USP37341AA50
Provincia de Córdoba	CORDO	01/feb/2029	6.875	74.75	14.40%	3.97	-	-	US74408DAE40
Provincia de Mendoza	MENDO	19/mar/2029	5.750	80.75	15.05%	2.23	-	1,000	US586805AJ20
Provincia de Neuquén	NEUQU	12/may/2030	7.000	98.00	7.77%	2.95	CC	150,000	US64126BAC46
Provincia de Chubut	CHUBT	26/jul/2030	7.750	86.50	14.38%	2.13	Ca	150,000	US17127LAA35
Provincia de Neuquén	NEUQU	27/oct/2030	5.000	75.50	14.08%	3.32	CC	1,000	USP7169GAA78
Provincia de Buenos Aires	BUENO	01/sep/2037	5.500	30.50	25.68%	5.26	Ca	1	XS2385151811
Provincia de Buenos Aires	BUENO	01/sep/2037	6.375	37.88	28.55%	3.73	Ca	1	XS2385150417
Provincia de Buenos Aires	BUENO	01/sep/2037	5.000	29.88	24.64%	5.50	Ca	1	XS2385150847





Empresa	TICKER	Precio (Local)	Capitalización Bursátil ARS M	Valor Nominal	Variación Porcentual								Ticker ADR	Factor	Vol Prom. 90 días (nominales)	Vol Prom. 90 días (M de ARS)	P/B Trail. 12m	P/E Trail. 12m	P/E Forward	EV/EB Trail. 12m
					1 día	En la semana	5 días	En el mes	1 mes	Acum. 2023	12 meses									
AGROBUSINESS																				
Cresud SACIF y A	CRES.BA	617.55	366,005.29	1	3.4	3.4	-5.8	-0.3	47.0	193.0	282.5	CRESY	10	323,792	200.0	2.3	11.6	-	25.6	
Molinos Agro SA	MOLA.BA	12,997.50	636,438.18	1	-1.5	-1.5	12.1	2.0	68.6	351.1	390.5			1,897	24.6	17.4	52.1	35.1	136.1	
Ledesma SAAI	LEDE.BA	450.00	198,000.00	1	-2.9	-2.9	-16.4	-5.5	33.3	175.3	239.0			35,739	16.1	2.4	14.6	-	9.3	
Agrometal SAI	AGRO.BA	250.00	25,000.00	1	-4.6	-4.6	-3.1	-1.2	56.5	267.6	287.1			215,291	53.8	3.1	-	-	6.8	
ALIMENTOS Y BEBIDAS																				
Molinos Río de la Plata SA	MOLI.BA	915.00	184,294.84	1	-0.5	-0.5	1.2	0.5	39.2	271.1	456.7			13,939	12.8	2.8	16.0	24.0	26.8	
Inversora Juramento SA	INVJ.BA	171.00	104,852.86	1	4.6	4.6	-4.1	0.3	49.3	415.1	484.6			47,443	8.1	1.5	-	837.5	9.4	
SA San Miguel AGICI y F	SAMI.BA	444.50	18,112.69	0.10	-1.2	-1.2	-7.7	-2.2	32.9	227.4	250.0			60,043	26.7	1.8	-	-	0.0	
AUTOPISTAS																				
Grupo Concesionario del Oeste	OEST.BA	370.50	59,304.92	1	0.1	0.1	2.5	0.0	55.2	259.7	323.4			7,428	2.8	3.0	33.2	-	18.6	
Autopistas del Sol SA	AUSO.BA	1,067.00	32,538.35	1	-2.7	-2.7	-3.6	-3.5		196.8	295.2			11,172	11.9	0.7	23.8	-	3.4	
BANCOS Y FINANCIERAS																				
Grupo Financiero Galicia SA	GGAL.BA	1,354.10	1,617,464.72	1	0.1	0.1	-3.0	-4.1	43.5	347.0	521.9	GGAL	10	1,700,887	2,303.2	1.8	16.9	13.4	3.3	
Banco Macro SA	BMA.BA	2,008.60	1,285,427.57	1	-1.9	-1.9	-3.2	-5.9	38.3	258.0	393.7	BMA	10	278,151	558.7	1.7	15.0	13.0	7.2	
Banco Bvva Argentina SA	BBAR.BA	1,408.00	863,435.88	1	-0.9	-0.9	-6.9	-5.5	41.4	209.3	396.2	BBAR	3	166,120	233.9	1.5	10.5	-	3.0	
Bolsas y Mercados Argentinos SA	BYMA.BA	522.00	398,366.46	1	-1.5	-1.5	-4.7	-3.3	46.6	145.9	177.1			346,538	180.9	4.2	26.6	-	22.9	
Banco Patagonia SA	BPAT.BA	351.00	244,428.12	1	-3.8	-3.8	1.0	-3.4	25.4	189.8	250.1			8,708	3.1	1.2	11.6	-	2.9	
Grupo Supervielle SA	SUPV.BA	456.35	180,251.01	1	-0.1	-0.1	-9.3	-5.3	30.3	197.6	328.5	SUPV	5	345,579	157.7	1.2	39.6	22.5	4.7	
Banco Hipotecario SA	BHIP.BA	46.80	32,950.39	1	-0.2	-0.2	-4.4	-1.8	34.5	148.9	303.4			546,191	25.6	0.4	6.1	-	0.2	
Grupo Financiero Valores	VALO.BA	142.75	122,660.97	1	0.9	0.9	-1.7	-1.6	33.4	116.3	132.9			629,341	89.8	4.6	51.5	-	12.9	
ENTRETENIMIENTO																				
Boldt SA	BOLT.BA	16.50	49,542.46	1	-5.7	-5.7	41.6	-14.7	79.2	138.4	198.4			787,428	13.0	2.9	-	-	0.0	
CONSUMO																				
Mirgor SACIFIA	MIRG.BA	9,646.00	173,776.95	0.10	-1.1	-1.1	-0.8	-1.0	5.3	74.3	130.8			9,261	89.3	1.7	145.3	-	3.7	
Laboratorios Richmond SACIF	RICH.BA	584.00	8,273.62	1	-0.8	-0.8	-5.2	2.6	11.2	50.1	103.8			7,975	4.7	0.6	-	-	11.2	
Domec	DOME.BA	23.10	2,311.98	1	-0.4	-0.4	9.0	5.0	38.7	54.0	40.0			5,386	0.1	1.4	-	-	0.0	
Havanna Holding SA	HAVA.BA	2,498.00	32,031.01	1	2.5	2.5	14.4	0.1	77.4	353.6	725.6			10,404	26.0	3.7	39.8	-	6.3	
MEDIOS																				
Cablevision Holding SA	CVH.BA	2,020.00	244,844.15	1	-2.3	-2.3	-6.4	-4.5	21.7	102.8	194.4			18,785	37.9	0.5	-	88.6	6.2	
Grupo Clarin SA	GCLA.BA	646.25	44,722.79	1	0.2	0.2	-0.3	0.9	34.5	226.4	185.1			14,171	9.2	0.9	-	24.8	3.3	
PAPEL Y CELULOSA																				
Celulosa Argentina SA	CELU.BA	443.00	44,755.57	0.01	-1.3	-1.3	3.7	-1.9	47.7	291.2	386.3			22,817	10.1	2.2	-	-	3.3	
PETRÓLEO Y GAS																				
YPF SA	YPFD.BA	10,787.00	4,245,745.43	10	-0.9	-0.9	-8.1	-5.0	30.7	242.7	557.5	YPF	1	240,333	2,592.5	1.5	14.0	4.6	7.1	
Sociedad Comercial del Plata SA	COME.BA	53.85	354,543.50	1	2.9	2.9	1.2	2.8	30.9	174.6	254.4			3,513,680	189.2	3.1	15.7	7.6	27.5	



Empresa	TICKER	Precio (Local)	Capitalización Bursátil ARS M	Valor Nominal	Variación Porcentual							Ticker ADR	Factor	Vol Prom. 90 días (nominales)	Vol Prom. 90 días (M de ARS)	P/B Trail. 12m	P/E Trail. 12m	P/E Forward	EV/EB Trail. 12m
					1 día	En la semana	5 días	En el mes	1 mes	Acum. 2023	12 meses								
REAL ESTATE Y CONSTRUCCIÓN																			
Loma Negra	LOMA.BA	1,025.70	611,868.83	0.10	2.1	2.1	-1.9	-1.2	34.6	126.1	192.3	LOMA	5	248,573	255.0	4.2	30.0	13.3	13.0
IRSA	IRSA.BA	554.05	449,272.78	1	-0.1	-0.1	-5.6	-0.2	28.1	276.9	445.6	IRS	10	171,836	95.2	1.5	9.4	-	15.8
Holcim Argentina SA	HARG.BA	780.00	285,279.47	1	1.8	1.8	-3.7	3.8	38.5	209.5	310.1			43,445	33.9	3.8	21.4	-	13.5
SIDERO-METALURGIA																			
Aluar Aluminio Argentino SAIC	ALUA.BA	602.00	1,687,046.04	1	-0.8	-0.8	-8.8	-3.3	39.8	241.0	330.8			915,097	550.9	9.0	59.7	25.3	31.7
Ternium Argentina SA	TXAR.BA	601.00	2,714,773.51	1	-1.2	-1.2	0.2	-2.3	45.0	164.8	241.0	TXAR	10	888,133	533.8	2.3	22.5	10.3	13.8
TELECOMUNICACIONES																			
Telecom Argentina SA	TECO2.BA	878.50	552,222.30	1	-0.7	-0.7	-5.7	-3.1	29.6	146.5	236.4	TEO	5	170,340	149.6	0.5	-	143.3	4.6
UTILITIES ELECTRICIDAD																			
Pampa Energía SA	PAMP.BA	1,430.15	1,984,469.49	1	1.4	1.4	-4.7	0.1	51.5	225.1	403.6	PAM	25.0	751,291	1,074.5	3.0	17.1	-	14.7
Central Puerto SA	CEPU.BA	542.25	820,978.57	1	-1.6	-1.6	-8.0	-3.4	49.9	156.4	347.4	CEPU	10.0	775,678	420.6	2.1	57.2	-	13.0
Edenor	EDN.BA	533.20	235,786.58	1	0.6	0.6	-4.5	0.6	25.8	290.8	449.4	EDN	20.0	302,212	161.1	1.4	-	-	0.0
Enel Generacion Costanera	CECO2.BA	294.50	206,735.58	1	-1.3	-1.3	-6.2	-3.9	47.1	158.9	390.8			68,767	20.3	3.8	-	-	20.5
Transener	TRAN.BA	457.00	99,575.80	1	0.9	0.9	-4.4	-1.4	35.0	147.7	416.4			458,953	209.7	0.8	26.5	7.4	4.9
EDESAL Holding SA	EDLH.BA	13.79	1,029.49	1	N.D	N.D	N.D	N.D	N.D	N.D	N.D			0	0.0	0.1	-	-	0.0
UTILITIES GAS																			
Transportadora de Gas del Sur	TGSU2.BA	1,898.75	721,034.03	1	-1.4	-1.4	-8.2	-4.0	40.0	134.1	394.5	TGS	5.0	234,494	445.2	1.7	46.6	12.3	10.2
Naturgy BAN SA	GBAN.BA	382.00	60,934.57	1	-3.3	-3.3	-4.5	-3.5	20.5	118.6	159.9			5,094	1.9	1.3	26.9	-	9.4
Camuzzi Gas Pampeana SA	CGPA2.BA	578.00	192,735.83	1	2.8	2.8	6.6	0.3	49.0	173.9	354.2			19,632	11.3	8.5	#####	-	540.6
MetroGAS SA	METR.BA	312.00	87,014.89	1	-0.2	-0.2	5.4	3.5	42.5	208.9	342.6			29,823	9.3	0.9	4.4	-	10.7
Transportadora de Gas del Norte	TGNO4.BA	843.00	74,078.42	1	0.1	0.1	-9.8	-2.8	25.4	134.5	465.8			264,549	223.0	0.4	-	-	3.4
Distribuidora de Gas Cuyana SA	DGCU2.BA	401.50	39,350.94	1	-0.7	-0.7	-3.4	-2.1	27.1	114.1	354.7			124,815	50.1	0.9	-	-	12.7



Empresa	TICKER	P/S Trail. 12m	Div Yield (%)	Marg. Bruto (%)	Marg. EBIT (%)	Marg. EBITDA (%)	Marg. Neto (%)	ROE (%)	ROA (%)	PN/A (%)	Acciones en Circulación (en M)	Free Float (en M)	Free Float (en %)	Ventas netas (en M de USD)	Res. Neto (en M de USD)	Activo (en M de USD)	Pasivo (en M de USD)	PN (en M de USD)
AGROBUSINESS																		
Cresud SACIF y A	CRES.BA	2.5	2.7	35.6	15.7	19.6	45.3	34.7	6.6	18.9	592.2	337.2	55.7	714.2	181.8	4,056.4	3,289.2	767.2
Molinos Agro SA	MOLA.BA	0.9	2.9	2.3	0.5	0.7	1.7	40.4	7.2	17.9	48.9	48.9	100.0	2,742.5	47.7	792.9	650.9	142.0
Ledesma SAAI	LEDE.BA	1.2	2.0	33.6	9.2	13.4	8.1	17.4	10.7	61.4	440.0	42.0	9.6	699.4	56.7	560.7	216.2	344.5
Agrometal SAI	AGRO.BA	1.8	2.1	36.5	23.3	25.7	-4.6	-10.8	-6.7	61.7	100.0	100.0	100.0	55.2	-2.5	50.4	19.3	31.1
ALIMENTOS Y BEBIDAS																		
Molinos Río de la Plata SA	MOLI.BA	1.0	0.6	22.6	1.2	4.2	6.3	24.1	10.3	42.8	200.6	200.6	100.0	715.1	44.8	590.5	337.9	252.6
Inversora Juramento SA	INVJ.BA	1.9	0.0	25.7	17.6	20.4	-2.9	-3.1	-1.8	57.6	613.2	613.2	100.0	217.1	-6.4	482.0	204.2	277.9
SA San Miguel AGICI y F	SAMI.BA	1.1	0.0	-8.7	-36.1	-19.4	-37.9	-62.8	-6.2	9.9	40.7	40.7	100.0	61.9	-23.4	399.7	360.3	39.4
AUTOPISTAS																		
Grupo Concesionario del Oeste	OEST.BA	3.1	0.0	33.9	14.9	16.2	9.4	12.9	6.9	54.1	78.4	0.0	0.0	74.2	7.0	141.8	65.1	76.6
Autopistas del Sol SA	AUSO.BA	1.0	0.5	47.6	23.6	25.6	12.1	12.4	7.2	58.0	30.5	30.5	100.0	127.5	15.4	303.9	127.7	176.1
BANCOS Y FINANCIERAS																		
Grupo Financiero Galicia SA	GGAL.BA	1.4	3.9	0.0	38.8	42.1	9.9	18.3	3.4	18.4	1,193.5	1,079.9	90.5	5,646.6	460.4	18,928.4	15,447.2	3,481.2
Banco Macro SA	BMA.BA	1.6	0.0	0.0	17.4	20.2	10.7	15.8	3.7	23.4	628.2	221.3	35.2	3,844.6	333.4	12,389.6	9,495.8	2,893.8
Banco Bbva Argentina SA	BBAR.BA	1.7	0.0	0.0	30.1	32.6	16.4	20.8	3.7	17.8	612.7	207.7	33.9	4,241.4	319.3	12,206.1	10,030.1	2,176.0
Bolsas y Mercados Argentinos SA	BYMA.BA	22.3	1.4	63.1	44.7	50.2	68.0	18.0	5.1	28.4	762.5	526.1	69.0	69.4	47.2	1,298.6	929.6	369.0
Banco Patagonia SA	BPAT.BA	1.0	0.0	0.0	19.1	20.9	9.1	15.3	2.6	17.3	696.4	114.5	16.4	2,107.6	104.5	5,486.4	4,539.1	947.3
Grupo Supervielle SA	SUPV.BA	0.9	0.0	0.0	6.9	13.5	2.4	4.7	0.7	14.2	395.0	296.3	75.0	1,577.0	19.7	4,025.3	3,454.8	570.5
Banco Hipotecario SA	BHIP.BA	0.3	0.0	0.0	19.0	20.8	8.9	19.4	2.4	12.3	703.5	703.5	100.0	642.0	43.9	2,618.0	2,295.2	322.9
Grupo Financiero Valores	VALO.BA	3.2	0.7	98.1	56.6	57.3	6.1	11.8	1.0	8.8	858.5	858.5	100.0	150.8	9.2	1,182.5	1,077.9	104.6
ENTRETENIMIENTO																		
Boldt SA	BOLT.BA	0.0	0.0	0.0	0.0	0.0	0.0	0.0	0.0	59.1	3,000.0	3,000.0	100.0	0.0	0.0	128.1	52.4	75.7
CONSUMO MINORISTA																		
Mirgor SACIFIA	MIRG.BA	0.3	0.1	22.1	7.6	9.2	2.0	14.3	4.5	31.2	14.9	14.9	100.0	1,986.4	39.4	1,251.6	860.6	391.0
Laboratorios Richmond SACIF	RICH.BA	0.4	0.3	51.5	12.2	18.1	-8.6	-14.6	-3.6	24.4	14.2	14.2	100.0	74.3	-6.3	229.5	173.5	56.0
Domec	DOME.BA	0.9	0.0	9.8	-9.8	-9.2	-7.5	-13.3	-9.2	69.2	100.0	5.0	-	11.4	-0.9	10.4	3.2	7.2
Havanna Holding SA	HAVA.BA	1.7	1.1	59.8	24.9	29.1	16.7	48.6	25.6	52.7	12.8	12.8	100.0	71.6	11.5	64.4	30.5	34.0
MEDIOS																		
Cablevision Holding SA	CVH.BA	0.3	0.0	82.3	-5.7	28.3	-18.0	-25.6	-4.7	18.4	121.1	121.1	100.0	3,598.4	-389.1	9,876.1	8,057.9	1,818.2
Grupo Clarin SA	GCLA.BA	0.5	0.0	37.5	9.5	13.6	-0.5	-1.0	-0.6	60.1	69.2	69.2	100.0	402.0	-1.8	403.9	161.4	242.6
PAPEL Y CELULOSA																		
Celulosa Argentina SA	CELU.BA	0.5	0.0	20.7	11.7	17.9	10.3	59.7	14.3	24.0	100.9	100.9	100.0	363.7	37.4	352.2	267.6	84.5
PETRÓLEO Y GAS																		
YPF SA	YPFD.BA	1.2	0.0	22.1	6.8	25.1	9.2	15.0	6.2	41.2	393.3	192.7	49.0	13,312.7	1,175.1	26,983.5	15,854.7	11,128.8
Sociedad Comercial del Plata SA	COME.BA	3.2	2.2	15.9	7.4	11.3	9.8	13.1	10.0	76.1	3,147.6	2,547.1	100.0	425.9	41.8	577.9	138.2	439.8



Empresa	TICKER	P/S Trail. 12m	Div Yield (%)	Marg. Bruto (%)	Marg. EBIT (%)	Marg. EBITDA (%)	Marg. Neto (%)	ROE (%)	ROA (%)	PN/A (%)	Acciones en Circulación (en M)	Free Float (en M)	Free Float (en %)	Ventas netas (en M de USD)	Res. Neto (en M de USD)	Activo (en M de USD)	Pasivo (en M de USD)	PN (en M de USD)
REAL ESTATE Y CONSTRUCCIÓN																		
Loma Negra	LOMA.BA	3.3	2.8	25.1	17.9	27.2	4.2	6.6	3.0	45.8	596.0	261.6	43.9	731.7	31.5	1,243.8	673.7	570.1
IRSA	IRSA.BA	6.8	4.9	65.2	46.6	48.8	82.9	25.4	13.0	51.2	810.9	338.8	41.8	318.2	252.9	2,782.7	1,357.9	1,424.8
Holcim Argentina SA	HARG.BA	3.5	0.6	37.1	17.2	24.3	16.2	18.5	12.9	69.8	365.7	63.9	17.5	466.3	75.4	604.1	182.7	421.4
SIDERO-METALURGIA																		
Aluar Aluminio Argentino SAIC	ALUA.BA	6.5	1.8	21.8	14.5	21.2	11.1	20.3	10.4	51.6	2,800.0	1,512.6	54.0	1,248.6	135.2	1,736.5	840.8	895.7
Ternium Argentina SA	TXAR.BA	4.1	0.0	32.8	24.1	27.3	18.4	13.3	12.0	90.2	4,517.1	1,690.7	37.4	2,549.4	470.2	5,208.2	511.8	4,696.4
TELECOMUNICACIONES																		
Telecom Argentina SA	TECO2.BA	0.6	0.0	72.8	-5.6	28.4	-22.2	-21.7	-10.2	46.9	628.1	382.0	60.8	3,598.4	-810.8	9,862.8	5,241.5	4,621.4
UTILITIES ELECTRICIDAD																		
Pampa Energia SA	PAMP.BA	5.9	0.0	38.3	31.7	44.3	34.3	25.1	12.6	50.1	1,386.4	964.4	69.6	1,312.5	449.9	5,201.7	2,594.1	2,607.6
Central Puerto SA	CEPU.BA	6.5	0.5	0.0	28.2	51.4	10.9	4.9	3.4	69.8	1,514.0	980.8	64.8	493.8	55.5	2,223.4	671.2	1,552.2
Edenor	EDN.BA	0.0	0.0	0.0	0.0	0.0	0.0	0.0	0.0	22.7	442.2	199.2	45.0	0.0	0.0	2,951.0	2,280.1	670.9
Enel Generacion Costanera	CECO2.BA	9.9	0.0	-0.5	-3.4	49.2	-16.9	-8.7	-6.8	78.1	702.0	170.7	24.3	81.5	-13.8	273.5	59.8	213.7
Transener	TRAN.BA	1.9	0.0	28.8	21.1	36.6	14.8	8.4	6.3	75.0	217.9	210.6	96.6	202.5	29.9	659.7	165.0	494.7
EDESAL Holding SA	EDLH.BA	0.0	63.1	0.0	-15.4	-6.5	-3.3	-7.3	-3.2	44.3	74.6	16.1	21.5	108.9	-3.6	140.6	78.3	62.3
UTILITIES GAS																		
Transportadora de Gas del Sur	TGSU2.BA	3.7	0.0	37.9	27.6	41.5	16.6	10.6	6.9	65.0	379.4	379.4	100.0	750.1	124.2	2,527.5	884.4	1,643.0
Naturgy BAN SA	GBAN.BA	0.8	0.0	0.0	4.6	7.0	5.8	14.0	8.7	62.1	159.5	159.5	100.0	310.8	18.0	294.4	111.6	182.8
Camuzzi Gas Pampeana SA	CGPA2.BA	2.6	0.0	17.0	-2.3	0.5	0.0	0.2	0.1	33.7	132.9	18.5	13.9	285.3	0.1	262.3	173.9	88.4
MetroGAS SA	METR.BA	0.6	0.0	0.0	0.6	6.8	30.0	65.6	27.2	41.5	278.9	278.9	100.0	525.9	157.0	910.1	532.7	377.4
Transportadora de Gas del Norte	TGNO4.BA	1.5	0.0	10.7	-13.4	36.3	25.3	8.4	6.5	77.3	87.9	87.9	100.0	192.8	48.7	1,046.1	237.5	808.5
Distribuidora de Gas Cuyana SA	DGCU2.BA	1.3	0.0	17.9	-1.1	8.3	-6.0	-6.1	-4.0	65.4	97.9	97.9	100.0	121.8	-7.3	246.7	85.4	161.3



ARGENTINA

Precios de Acciones ADRs en el exterior

Empresa	TICKER	Precio (Exterior)	Capitalización Bursátil USD M	Valor Nominal	Variación Porcentual					Acum. 2023	12 meses	Factor
					1 día	En la semana	5 días	En el mes	1 mes			
AGROBUSINESS												
Adecoagro SA	AGRO.K	11.73	1,257.34	1.50	2.2	3.6	3.6	2.2	7.6	41.5	30.3	2
Bioceres Crop Solutions Corp	BIOX.O	12.06	757.62	0.0001	-1.6	8.0	8.0	-1.6	-5.1	0.2	-11.3	
Cresud SACIF y A	CRESY.O	7.69	1,045.73	1	-3.9	-3.8	-3.8	-3.9	-1.3	23.7	32.6	10
BANCOS Y FINANCIERAS												
Grupo Financiero Galicia SA	GGAL.O	17.58	4,621.33	1	-2.8	6.3	6.3	-2.8	8.2	94.3	128.0	10
Banco Macro SA	BMA.N	26.06	3,672.65	1	-2.2	5.5	5.5	-2.2	5.8	70.9	96.2	10
Banco Bbva Argentina SA	BBAR.N	5.49	2,466.96	3	-4.0	0.9	0.9	-4.0	3.0	46.5	92.3	3
Grupo Supervielle SA	SUPV.N	2.92	515.00	0.002	-4.9	-1.0	-1.0	-4.9	-5.2	35.2	57.8	5
CONSUMO												
Corporacion America Airports	CAAP.N	13.88	2,265.53	1	-1.4	-1.5	-1.5	-1.4	-1.6	59.0	114.5	
Despegar.com	DESP.N	8.24	544.31	-	3.6	5.2	5.2	3.6	2.0	60.6	5.4	
PETRÓLEO Y GAS												
Tenaris SA	TS.N	32.30	18,910.20	1	1.2	-0.3	-0.3	1.2	-3.9	-8.1	20.0	
YPF SA	YPF.N	14.21	12,130.70	-	-1.6	-3.7	-3.7	-1.6	-3.2	54.6	152.8	1
Vista Oil & Gas	VIST.K	26.74	2,276.09	-	-0.2	2.4	2.4	-0.2	3.6	70.8	179.4	
REAL ESTATE Y CONSTRUCCIÓN												
Ternium SA	TX.N	42.41	8,325.41	10	1.5	5.8	5.8	1.5	-3.4	38.8	43.6	10
Loma Negra	LOMA.K	6.46	1,748.20	5	-3.1	-0.6	-0.6	-3.1	-1.5	0.6	8.4	5
IRSA	IRS.N	7.21	1,283.64	1	0.1	1.0	1.0	0.1	-3.2	65.6	97.8	10
TELECOMUNICACIONES												
Telecom Argentina SA	TEO.N	5.68	1,577.78	1	-1.2	3.8	3.8	-1.2	-6.7	9.5	31.2	5
TECNOLOGÍA												
MercadoLibre Inc	MELI.O	1,421.64	71,213.74	0.01	3.6	14.8	14.8	3.6	17.5	68.0	65.5	
Globant SA	GLOB.K	202.28	8,583.70	1.2	-1.1	6.0	6.0	-1.1	15.8	20.3	-0.9	
UTILITIES ELECTRICIDAD												
Pampa Energia SA	PAM.N	45.83	5,669.91	25	0.6	0.1	0.1	0.6	6.9	43.5	87.8	25
Central Puerto SA	CEPU.N	7.10	2,345.65	10	-1.4	-0.4	-0.4	-1.4	11.5	19.5	65.9	10
Edenor	EDN.N	13.73	673.68	-	-2.4	-1.4	-1.4	-2.4	-6.6	71.8	110.6	20
UTILITIES GAS												
Transportadora de Gas del Sur	TGS.N	12.46	2,060.10	5	-0.2	-3.3	-3.3	-0.2	4.1	5.6	88.5	5



ARGENTINA

Precios de CEDEARS en BYMA

Empresa	TICKER	Precio (Local)	Capitalización Bursátil USD M (al CCL)	Variación Porcentual					Acum. 2023	12 meses	País de Origen
				1 día	En la semana	5 días	En el mes	1 mes			
MATERIALES BÁSICOS											
Bioceres Crop Solutions Corp	BIOX.BA	18,662.50	373.92	0.3	0.3	4.0	-0.2	29.3	125.1	135.3	Argentina
Dupont De Nemours Inc	DD.BA	11,864.50	17,665.33	0.0	0.0	-0.5	-1.4	30.8	153.5	273.3	EE.UU.
Barrick Gold Corp	GOLD.BA	12,601.50	13,989.56	2.0	2.0	-0.6	0.0	30.8	115.7	202.6	Canadá
Aluminum Corporation of China Ltd	ACH.BA	ord could not t	7,134.45	10.7	10.7	6.6	11.0	14.0	189.8	119.7	China
Yamana Gold Inc	AUY.BA	ord could not t	1,675.38	0.0	0.0	0.0	-6.4	-5.0	17.4	82.9	Canadá
BHP Group Ltd	BHP.BA	22,808.50	74,540.85	1.8	1.8	3.3	1.5	29.3	123.4	228.3	Australia
Coeur Mining Inc	CDE.BA	1,890.00	420.07	2.2	2.2	-4.6	0.8	16.3	63.2	146.7	EE.UU.
Freeport-McMoRan Inc	FCX.BA	11,072.50	29,356.62	4.0	4.0	9.4	6.6	33.0	160.2	311.9	EE.UU.
Harmony Gold Mining Company Ltd	HMY.BA	3,152.00	1,275.61	-1.0	-1.0	-2.4	-1.7	36.7	172.2	344.0	Sudáfrica
Newmont Corporation	NEM.BA	10,240.00	15,422.62	1.1	1.1	-0.5	1.0	28.8	97.5	164.3	EE.UU.
Rio Tinto PLC	RIO.BA	12,481.00	52,891.71	1.7	1.7	2.8	2.3	34.8	112.8	225.6	Reino Unido
Southern Copper Corp	SCCO.BA	33,000.00	31,341.42	5.2	5.2	6.6	4.6	34.3	230.7	408.3	EE.UU.
Ternium SA	TXR.BA	16,713.00	4,108.94	2.9	2.9	4.9	2.7	38.6	225.2	304.9	Luxembourg
Vale SA	VALE.BA	5,393.50	31,458.36	0.8	0.8	5.9	4.9	35.2	91.4	214.5	Brasil
United States Steel Corp	X.BA	7,942.50	3,415.70	-0.3	-0.3	1.4	-1.1	68.9	178.4	282.0	EE.UU.
Avery Dennison Corp	AVY.BA	8,005.00	7,517.51	0.0	0.0	-1.9	-0.7	32.2	135	2,317.4	EE.UU.
CONSUMO DISCRECIONAL											
Despegar.com Corp	DESP.BA	6,368.50	268.64	0.0	0.0	3.1	3.5	29.0	265.6	180.2	Argentina
Amazon.com Inc	AMZN.BA	749.00	703,340.11	1.6	1.6	3.2	0.2	31.9	276.4	193.2	EE.UU.
Arcos Dorados Holdings Inc	ARCO.BA	15,581.50	1,030.31	3.1	3.1	-2.0	1.0	23.4	177.4	272.5	Uruguay
Walt Disney Co	DISN.BA	5,302.50	73,726.80	1.3	1.3	-4.0	-2.2	26.0	114.8	95.1	EE.UU.
Home Depot Inc	HD.BA	8,230.00	164,399.69	2.7	2.7	3.2	1.9	37.1	252.6	345.4	EE.UU.
Honda Motor Co Ltd	HMC.BA	24,972.00	29,734.43	0.0	0.0	-0.7	-1.3	37.2	217.6	232.9	Japón
McDonald's Corp	MCD.BA	9,150.00	101,133.81	1.9	1.9	-1.4	0.3	30.8	143.8	196.6	EE.UU.
Nike Inc	NKE.BA	6,684.00	77,292.51	1.6	1.6	2.4	1.4	26.1	100.7	163.2	EE.UU.
Target Corp	TGT.BA	3,950.00	28,596.16	-2.0	-2.0	-1.8	-3.9	22.4	88.2	100.2	EE.UU.
Tripadvisor Inc	TRIP.BA	6,050.00	1,062.40	1.1	1.1	1.4	2.4	26.6	96.4	78.4	EE.UU.
Tesla Inc	TSLA.BA	12,811.50	383,807.77	2.3	2.3	2.3	-4.6	29.5	355.4	139.4	EE.UU.
Grupo Televisa SAB	TV.BA	1,080.00	1,184.33	-2.0	-2.0	-7.8	-7.3	11.3	108.2	68.6	México
CONSUMO NO DISCRECIONAL											
Kimberly-Clark Corp	KMB.BA	16,400.00	21,274.15	0.0	0.0	-3.5	-1.3	29.6	116.7	166.7	EE.UU.
Walmart Inc	WMT.BA	20,923.50	214,629.39	1.2	1.2	0.6	-0.9	35.7	160.1	224.1	EE.UU.
Adecoagro SA	ADGO.BA	18,695.50	620.55	4.0	4.0	4.2	4.6	47.7	232.9	265.4	Luxembourg
Bunge Ltd	BNG.BA	17,650.00	8,551.54	-0.3	-0.3	-1.7	-1.6	30.8	163.3	214.6	EE.UU.
Diageo PLC	DEO.BA	20,895.00	44,461.27	0.0	0.0	-4.2	-2.9	26.1	111.8	147.2	EE.UU.
Coca-Cola Co	KO.BA	9,133.50	126,582.02	0.3	0.3	-4.2	-1.8	28.5	110.2	158.0	EE.UU.
Altria Group Inc	MO.BA	8,713.50	38,633.47	2.7	2.7	0.6	1.2	35.2	125.7	176.3	EE.UU.
PepsiCo Inc	PEP.BA	22,710.00	119,112.38	0.8	0.8	-3.6	-2.0	26.0	121.4	173.9	EE.UU.
Procter & Gamble Co	PG.BA	24,381.00	179,729.92	2.8	2.8	0.6	1.3	34.0	136.5	204.2	EE.UU.
Ambev SA	ABEV.BA	6,560.00	21,805.46	2.2	2.2	-4.0	1.4	25.7	130.7	166.9	Brasil
Berkshire Hathaway Inc	BRKB.BA	12,765.50	390,168.90	0.6	0.6	0.3	0.1	36.9	164.4	243.1	EE.UU.
General Electric Co	GE.BA	11,178.50	61,365.15	2.3	2.3	-0.2	0.0	34.9	218.2	321.7	EE.UU.
Honeywell International Inc	HON.BA	19,175.00	61,734.01	5.0	5.0	3.8	4.6	38.7	113.6	178.8	EE.UU.
3M Co	MMM.BA	16,983.50	29,136.52	3.2	3.2	3.6	1.9	38.7	108.6	137.5	EE.UU.
ENERGÍA											
Vista Oil & Gas Argentina SA	VIST.BA	20,870.50	N.D.	1.4	1.4	-2.7	-0.2	42.4	290.2	650.1	Argentina
BP PLC	BP.BA	5,990.00	53,834.18	1.2	1.2	4.2	3.5	38.7	156.4	246.8	Reino Unido
Chevron Corp	CVX.BA	15,955.50	154,685.00	1.1	1.1	1.2	1.8	36.8	109.6	188.2	EE.UU.
Gazprom PAO	OGZD.BA	348.00	21,838.86	N.D.	N.D.	N.D.	N.D.	N.D.	N.D.	N.D.	Rusia
Petroleo Brasileiro SA Petrobras	PBR.BA	11,315.00	44,226.90	2.0	2.0	-0.5	3.7	45.6	240.4	212.9	Brasil
PetroChina Co Ltd	PTR.BA	3,443.50	95,206.93	0.0	0.0	0.0	0.0	0.0	0.0	0.0	China
Schlumberger NV	SLB.BA	16,000.00	42,169.04	3.9	3.9	6.2	4.3	41.1	165.0	350.4	EE.UU.
Exxon Mobil Corp	XOM.BA	17,922.00	224,286.26	2.7	2.7	4.2	3.8	42.9	139.9	235.5	EE.UU.
Tenaris SA	TEN.BA	24,780.00	9,340.98	0.1	0.1	-4.0	-0.3	29.1	108.1	222.4	Luxembourg
FINANZAS											
American International Group Inc	AIG.BA	9,289.00	20,814.10	2.1	2.1	2.1	1.7	30.4	116.0	210.0	EE.UU.
American Express Co	AXP.BA	8,295.00	58,017.58	1.0	1.0	-0.7	1.2	28.1	146.0	186.6	EE.UU.
Bank of America Corp	BAC.BA	11,394.50	113,655.65	2.5	2.5	1.0	2.2	25.6	104.4	139.1	EE.UU.
Banco Bradesco SA	BBD.BA	2,364.50	14,924.89	2.3	2.3	-4.4	1.1	28.0	146.7	133.4	Brasil
Banco Bilbao Vizcaya Argentaria SA	BBV.BA	5,980.00	23,135.80	0.1	0.1	-3.8	-2.8	33.7	195.9	382.4	España
Banco Santander Brasil SA	BSBR.BA	4,200.00	10,250.11	0.3	0.3	-2.9	-1.8	25.4	133.9	164.9	Brasil
Citigroup Inc	C.BA	10,790.00	39,527.73	1.2	1.2	-0.1	0.7	21.0	112.1	132.5	EE.UU.
Goldman Sachs Group Inc	GS.BA	19,500.00	53,270.08	0.5	0.5	-1.0	-0.4	23.3	117.3	166.8	EE.UU.
HSCB Holdings PLC	HSBC.BA	14,500.00	71,755.31	0.8	0.8	-3.0	-0.5	22.3	188.4	234.8	Reino Unido
ING Groep NV	ING.BA	3,624.50	24,981.66	0.0	0.0	-5.0	-2.8	27.2	171.6	345.7	Países Bajos
Itau Unibanco Holding SA	ITUB.BA	4,390.00	24,836.66	2.5	2.5	-1.8	1.6	31.9	191.0	224.0	Brasil
JPMorgan Chase & Co	JPM.BA	23,314.00	210,580.11	3.3	3.3	0.6	2.3	27.5	156.2	256.9	EE.UU.
Lloyds Banking Group PLC	LYG.BA	800.00	16,584.20	-0.7	-0.7	-5.2	-2.9	24.8	120.6	187.7	Reino Unido
Wells Fargo & Co	WFC.BA	6,600.00	75,209.98	3.0	3.0	0.1	2.7	26.1	135.7	165.4	EE.UU.



ARGENTINA

Precios de CEDEARS en BYMA

Empresa	TICKER	Precio (Local)	Capitalización Bursátil USD M (al CCL)	Variación Porcentual					Acum. 2023	12 meses	País de Origen
				1 día	En la semana	5 días	En el mes	1 mes			
SALUD											
Abbott Laboratories	ABT.BA	19,750.00	88,088.08	0.0	0.0	-2.1	-1.6	25.2	111.4	161.7	EE.UU.
AstraZeneca PLC	AZN.BA	26,500.00	103,292.96	1.6	1.6	-1.8	0.3	30.5	132.9	196.8	Reino Unido
Biogen Inc	BIIB.BA	15,990.00	19,096.33	2.0	2.0	-0.6	0.2	31.7	123.4	259.3	EE.UU.
Bristol-Myers Squibb Co	BMY.BA	16,490.00	63,946.29	3.3	3.3	2.3	3.4	39.0	102.6	151.9	EE.UU.
Gilead Sciences Inc	GILD.BA	14,310.50	47,136.68	-2.3	-2.3	-5.4	-4.2	23.9	96.0	209.0	EE.UU.
GSK plc	GSK.BA	6,700.00	34,975.78	0.1	0.1	-3.2	-2.0	33.6	128.5	194.9	Reino Unido
Johnson & Johnson	JNJ.BA	8,353.00	190,723.29	1.6	1.6	-3.2	-0.7	27.5	108.9	165.1	EE.UU.
Eli Lilly and Co	LLY.BA	58,515.00	261,015.33	10.2	10.2	7.5	7.7	78.8	276.6	421.6	EE.UU.
Merck & Co Inc	MRK.BA	17,300.00	137,560.57	2.6	2.6	1.2	1.5	40.9	130.4	245.2	EE.UU.
Novartis AG	NVS.BA	20,000.00	113,288.37	3.6	3.6	-0.1	1.8	33.6	163.2	247.2	Suiza
Pfizer Inc	PFE.BA	14,083.50	99,701.54	2.5	2.5	-1.0	2.1	37.5	63.1	112.3	EE.UU.
Thermo Fisher Scientific Inc	TMO.BA	19,490.00	106,140.53	0.2	0.2	-0.2	-3.1	33.5	130.5	166.4	EE.UU.
INDUSTRIA											
Boeing Co	BA.BA	28,050.00	66,507.53	-2.1	-2.1	-5.6	-3.6	24.2	160.3	277.8	EE.UU.
Caterpillar Inc	CAT.BA	11,174.50	72,071.12	1.5	1.5	3.3	2.1	37.5	174.7	324.7	EE.UU.
Deere & Co	DE.BA	8,326.00	59,542.56	3.2	3.2	7.2	3.5	33.7	129.3	215.2	EE.UU.
Embraer SA	ERJ.BA	12,250.00	1,477.46	0.0	0.0	0.4	0.3	45.3	229.1	307.8	Brasil
Lockheed Martin Corp	LMT.BA	17,228.50	55,703.98	-0.4	-0.4	-3.0	-1.2	31.7	110.5	185.4	EE.UU.
Snap-On Inc	SNA.BA	35,000.00	7,065.04	0.4	0.4	0.4	0.3	31.7	175.2	239.8	EE.UU.
Block Inc	SQ.BA	2,266.50	17,514.87	1.2	1.2	2.8	0.7	21.6	111.2	126.4	EE.UU.
TECNOLOGÍA											
Cisco Systems Inc	CSCO.BA	8,905.50	116,328.43	0.3	0.3	1.1	-0.4	44.1	175.2	246.5	EE.UU.
Spotify Technology SA	SPOT.BA	4,302.50	15,138.48	-0.3	-0.3	8.1	0.2	42.6	346.5	287.6	Luxembourg
Alibaba Group Holding Ltd	BABA.BA	8,263.50	119,264.69	2.0	2.0	2.5	2.8	31.1	147.3	173.3	China
Yelp Inc	YELP.BA	16,891.00	1,488.44	0.0	0.0	4.4	1.1	25.0	276.4	226.5	EE.UU.
Netflix Inc	NFLX.BA	21,350.50	96,206.76	1.0	1.0	4.0	1.0	35.2	236.4	411.3	EE.UU.
Visa Inc	V.BA	10,810.50	249,235.32	2.1	2.1	1.3	1.7	39.0	175.8	236.1	EE.UU.
Apple Inc	AAPL.BA	14,604.50	1,461,900.68	0.6	0.6	3.1	-0.4	36.9	228.6	220.1	EE.UU.
Adobe Inc	ADBE.BA	19,500.00	126,697.62	-1.0	-1.0	2.6	-2.0	37.7	273.2	296.4	EE.UU.
Analog Devices Inc	ADI.BA	9,400.00	44,866.59	0.3	0.3	-0.6	-0.7	28.5	152.3	226.0	EE.UU.
Advanced Micro Devices Inc	AMD.BA	8,616.00	87,275.55	2.6	2.6	7.0	4.7	27.2	290.2	262.6	EE.UU.
America Movil SAB de CV	AMX.BA	14,394.50	28,886.97	0.0	0.0	-3.0	-3.2	23.9	132.0	195.2	México
Broadcom Inc	AVGO.BA	17,564.50	177,712.63	1.8	1.8	1.1	-4.7	31.2	264.4	387.9	EE.UU.
Baidu Inc	BIDU.BA	10,610.50	25,272.05	3.4	3.4	8.2	4.7	34.6	196.6	177.1	China
Salesforce Inc	CRM.BA	9,811.00	106,382.25	3.4	3.4	6.1	2.1	40.2	291.7	296.4	EE.UU.
Telefonaktiebolaget LM Ericsson	ERIC.BA	1,999.00	8,523.76	0.7	0.7	2.6	-0.1	36.9	104.4	93.1	Suecia
Meta Platforms Inc	FB.BA	ord could not t	376,391.41	1.7	1.7	1.4	-0.2	27.1	461.4	382.0	EE.UU.
Globant SA	GLNT.BA	ord could not t	4,236.41	-0.1	-0.1	2.6	-2.7	49.9	170.4	164.5	Luxembourg
Alphabet Inc	GOOGL.BA	1,813.50	847,485.03	1.1	1.1	2.2	-1.0	40.2	247.1	230.0	EE.UU.
Garmin Ltd	GRMN.BA	27,161.50	10,019.65	0.0	0.0	-1.5	-1.8	29.5	164.1	216.0	Suiza
HP Inc	HPQ.BA	23,518.50	14,778.36	1.0	1.0	-4.4	2.0	23.5	164.7	190.5	EE.UU.
International Business Machines Corp	IBM.BA	23,714.00	66,516.71	4.3	4.3	3.0	3.5	41.1	149.4	221.9	EE.UU.
Intel Corp	INTC.BA	5,787.50	75,671.12	3.1	3.1	9.4	5.4	40.8	224.7	217.7	EE.UU.
MercadoLibre Inc	MELI.BA	18,385.50	35,146.95	1.2	1.2	12.6	3.1	45.3	280.3	345.0	Argentina
Microsoft Corp	MSFT.BA	8,523.50	1,205,162.57	1.2	1.2	0.5	0.1	33.5	212.9	240.4	EE.UU.
Nokia Oyj	NOKA.BA	3,100.00	11,166.10	1.1	1.1	3.5	-0.4	36.0	96.9	116.7	Finlandia
NVIDIA Corp	NVDA.BA	15,852.00	591,347.90	2.1	2.1	3.4	-1.5	45.3	662.2	840.6	EE.UU.
Oracle Corp	ORCL.BA	31,900.00	161,997.80	2.8	2.8	4.3	1.9	40.2	243.4	340.9	EE.UU.
PayPal Holdings Inc	PYPL.BA	6,244.50	34,450.31	2.4	2.4	2.9	2.5	35.8	104.7	86.4	EE.UU.
Qualcomm Inc	QCOM.BA	8,104.00	45,030,750.10	0.8	0.8	1.7	-0.2	26.6	140.0	139.3	EE.UU.
Shopify Inc	SHOP.BA	478.50	42,224.26	0.7	0.7	15.3	-0.8	50.5	334.0	456.4	Canadá
Snap Inc	SNAP.BA	7,930.50	8,361.64	-1.3	-1.3	6.8	-2.3	25.9	160.5	134.5	EE.UU.
AT&T Inc	T.BA	3,876.00	51,690.02	3.2	3.2	4.0	0.5	41.4	88.0	135.8	EE.UU.
Twitter Inc	TWTR.BA	ord could not t	9,029.51	0.0	0.0	0.0	0.0	8.5	82.7	45.7	EE.UU.
Vodafone Group PLC	VOD.BA	7,000.00	12,230.11	-2.1	-2.1	-2.6	-3.2	27.1	106.5	86.8	EE.UU.
Verizon Communications Inc	VZ.BA	13,643.50	72,329.92	1.8	1.8	3.4	0.0	43.1	106.3	131.6	EE.UU.
Xerox Holdings Corp	XROX.BA	12,783.00	1,277.95	0.7	0.7	7.9	3.8	41.3	163.2	146.8	EE.UU.
Zoom Video Communications Inc	ZM.BA	1,181.50	10,652.91	1.2	1.2	5.1	0.0	36.6	141.6	134.9	EE.UU.
UTILITIES											
National Grid PLC	NGG.BA	23,275.00	22,432.28	-4.4	-4.4	-5.5	-6.0	26.7	128.1	153.7	Reino Unido



TASAS y TIPOS DE CAMBIO

Tipo de Cambio	Compra	Venta
BCRA Com. A3500	350.03	
Minorista (Casas de Cambio)	350.00	370.00
Mayorista	349.00	350.00
BNA (Oficial)	347.50	365.50
Implícito (CCL)	702.45	708.55
Bolsa (MEP)	671.61	671.76
Ahorro/Tarjeta (Ofic + Imp PAIS + Perc Gcias)	612.50	647.50
Qatar (Ofic + Imp PAIS + Perc Gcias + BsPs)	700.00	740.00
Eventos (Ofic + Imp PAIS)	453.70	455.00
Importaciones de Bienes	357.73	358.75
Importaciones de Servicios	436.25	437.50
Agro (sorgo, girasol y maíz)	340.00	340.00

Dólar ROFEX	Mayorista	TNA
sep-23	363.45	50.09%
oct-23	407.00	99.07%
nov-23	518.30	195.01%
dic-23	685.00	293.58%
ene-24	745.50	271.35%
feb-24	802.50	260.71%
mar-24	859.50	255.45%
abr-24	908.00	240.46%
may-24	963.00	234.17%
jun-24	975.40	216.68%
jul-24	1005.00	204.51%

Tipo de Cambio - Futuro FORWARD	Último	vs. Spot (en ARS)
1 mes	377.71	27.69
2 meses	427.64	77.61
3 meses	560.51	210.48
6 meses	836.25	486.23
9 meses	990.12	640.09
12 meses	1073.11	723.09

Coeficiente de Estabilización de Referencia (CER)	
Valor diario	124.20

Ahorro y Crédito	
Unidad de Valor Adquisitivo	313.04
Unidad de Vivienda	273.81

Reservas Internacionales (en M de USD)	
Valor diario	27,818

Tasa de Política Monetaria (%)	TNA
Letras de Liquidez (Leliq)	118.00

Tasa de Call Money (%)	TNA
Oficial 1 día	111.00
Privada 1 día 1ra Línea	114.00
Privada 7 días 1ra Línea	116.00
Privada 1 día 2da Línea	115.00
Privada 7 días 2da Línea	117.00

Tasa de Pases (%)	TNA
Pasivos 1 día	-
Activos 1 día	140.00

Tasa REPO (%)	TNA
REPO 1 día	91.83

Tasa de Depósitos (%)	TNA
Plazo Fijo en pesos 30 días	118.00
Plazo Fijo en pesos 30 días 2da línea	120.00
Plazo Fijo en dólares 30 días	0.50

Tasa de Préstamos (%)	TNA
Préstamos en pesos 1ra línea	110.42

Interbancaria BAIBAR (%)	TNA
Bancos Privados	113.10

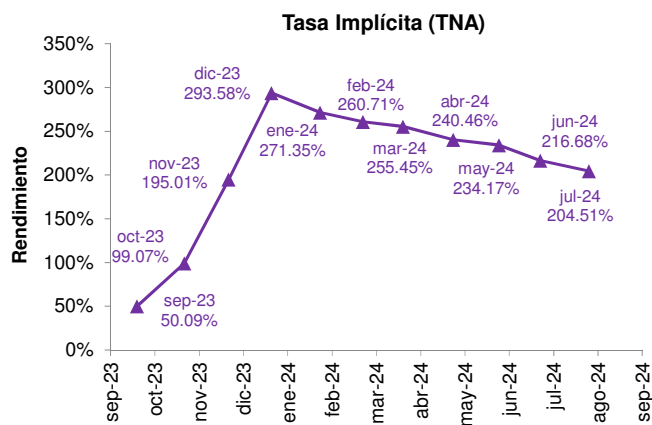
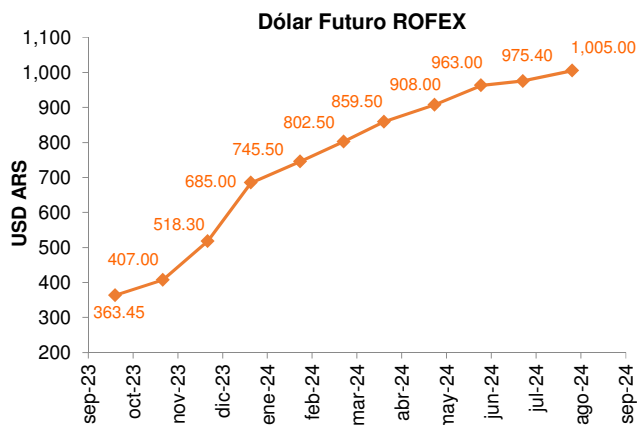
Interbancaria BADLAR (%)	TNA
Badlar Privada en pesos	114.188
Badlar Pública en pesos	111.625
Badlar Privada en dólares	0.313
Badlar Pública en dólares	0.44

Cauciones (%)		TNA
Caución BCBA 7 días en dólares		1.00
Caución BCBA 7 días en pesos		94.00
Caución BCBA 14 días en pesos		99.80
Caución BCBA 21 días en pesos		81.10
Caución BCBA 30 días en pesos		108.00

Tasas Pasivas BNA (%)	TEA	TNA
Pesos 30 días	208.400	118.00
Dólares 30 días	0.500	0.50

Tasas Activas BNA (%)	TNA
Diversas 30 días	136.87

Tasa Encuesta (%)		TNA
Plazo Fijo pesos Total		113.15
Plazo Fijo pesos 30 días		113.66
Plazo Fijo pesos 7 a 59 días		113.10
Plazo Fijo pesos 60 a +días		116.09
Plazo Fijo dólares Total		0.34
Plazo Fijo dólares 30 días		0.32
Plazo Fijo dólares 7 a 59 días		0.32
Plazo Fijo dólares 60 a +días		0.71
C. Ahorro pesos		40.13
C. Ahorro dólares		0.02





DÓLARES IMPLÍCITOS

DÓLAR MEP y CCL -Calculado con Bonos-

Especie	Ticker	Cotizaciones			Variación % Dólar/Cable	Dólar MEP	Dólar CCL	Spread % MEP/CCL
		en pesos ByMA	en dólares ByMA (Dólar)	en dólares OTC (Cable)				
Bonar 2029	AL29	23,214.00	34.00	32.30	5.3%	682.76	718.70	-5.0%
Bonar 2030	AL30	22,121.00	32.93	32.93	0.0%	671.76	671.76	0.0%
Bonar 2035	AL35	22,650.00	33.30	32.30	3.1%	680.18	701.24	-3.0%
Bonar 2038	AE38	24,700.00	36.50	30.00	21.7%	676.71	823.33	-17.8%
Bonar 2041	AL41	22,400.00	33.00	28.25	16.8%	678.79	792.92	-14.4%
Global 2029	GD29	25,400.00	37.00	31.25	18.4%	686.49	812.80	-15.5%
Global 2030	GD30	25,970.00	38.61	32.62	18.4%	672.62	796.21	-15.5%
Global 2035	GD35	23,300.00	34.00	29.38	15.7%	685.29	793.19	-13.6%
Global 2038	GD38	27,970.00	39.81	34.00	17.1%	702.59	822.65	-14.6%
Global 2041	GD41	24,348.50	35.00	29.75	17.6%	695.67	818.44	-15.0%
Global 2046	GD46	23,700.00	34.02	29.25	16.3%	696.65	810.26	-14.0%

DÓLAR CCL -Calculado con Acciones-

Especie	Ticker (ByMA)	Cotizaciones		Dólar CCL
		en pesos ByMA	en dólares (Nueva York)	
Cresud	CRES	617.55	7.69	803.06
BBVA Banco Francés	BBVA	1,408.00	5.49	769.40
Banco Macro	BMA	2,008.60	26.06	770.76
Grupo Supervielle	SUPV	456.35	2.92	781.42
Grupo Financiero Galicia	GGAL	1,354.10	17.58	770.25
YPF	YPFD	10,787.00	14.21	759.11
Loma Negra	LOMA	1,025.70	6.46	793.89
IRSA	IRSA	554.05	7.21	768.45
Telecom Argentina	TECO2	878.50	5.68	773.33
Pampa Energía	PAMP	1,430.15	45.83	780.14
Central Puerto	CEPU	542.25	7.10	763.73
Edenor	EDN	533.20	13.73	776.69
Transportadora de Gas del Sur	TGSU2	1,898.75	12.46	761.94



VARIABLES MACROECONÓMICAS

Estimaciones del Consenso y REM del BCRA

ARGENTINA: PROYECCIONES DE VARIABLES MACROECONÓMICAS

Indicador	2017	2018	2019	2020	2021	2022e	2023e	2024e	2025e
PIB real (YoY%)	2.8	-2.6	-2.0	-9.9	10.4	5.2	-2.8	-0.8	2.8
Consumo privado (YoY%)	3.7	-1.5	-6.9						
Consumo del Estado (YoY%)	2.5	-3.2	-0.7						
Inversión en capital fijo (YoY)	10.3	-3.1	-16.0						
Exportaciones (YoY%)	0.4	-6.1	-21.0	-10.5	29.8	14.4	-4.5	1.6	0.8
Importaciones (YoY%)	12.4	-0.4	12.3	-12.9	12.6	0.7	3.9	4.8	5.1
Producción industrial (YoY%)	2.0	-3.8	-7.8						
IPC (oficial, YoY)	23.6	47.6	53.8	36.1	48.4	94.8	140.7		
Desempleo (%)	8.4	9.2	9.8	11.6	8.7	6.9	6.9	6.9	6.9
Cuenta Corriente (% del PIB)	-4.8	-5.2	-0.8	0.8	1.4	-0.7	1.0	0.8	
Balance fiscal (% de PIB)	-6.8	-4.4	-4.1						
Tasa del Banco Central (%)		59.25	55.00	38.00	34.50	75.00	97.00		
USDARS	18.62	37.67	62.50	86.16	105.75	177.16	423.22		

Fuente: FMI, R.E.M. del BCRA

RELEVAMIENTO DE EXPECTATIVAS DE MERCADO (R.E.M.) DEL BCRA

ACTIVIDAD

Expectativas de crecimiento anual: variación % promedio anual, a precios constantes

	Mediana (JUL-23)	Mediana (JUN-23)	Var bps	Promedio (JUL-23)	Promedio (JUN-23)	Var bps
2023	-2.8	-3.0	20	-2.4	-2.3	-10
2024	-0.8	-0.6	-20	-0.6	-0.6	0
2025	2.8	2.6	20	2.9	2.9	0

Expectativas de crecimiento trimestral: variación % QoQ, a precios constantes

	Mediana (JUL-23)	Mediana (JUN-23)	Var bps	Promedio (JUL-23)	Promedio (JUN-23)	Var bps
2ºT23	-2.3	-2.6	30	-2.4	-2.5	10
3ºT23	-1.3	-1.4	10	-0.3	-0.4	10
4ºT23	-1.3	-1.2	-10	-1.3	-1.5	20

PRECIOS MINORISTAS (NIVEL GENERAL)

Expectativas de inflación minorista (IPC Nivel General-Nacional): variación % MoM

	Mediana (JUL-23)	Mediana (JUN-23)	Var bps	Promedio (JUL-23)	Promedio (JUN-23)	Var bps
jul-23	7.0	7.6	-60	7.1	7.7	-60
ago-23	7.9	7.5	40	7.8	7.8	0
sep-23	7.8	7.8	0	7.8	8.0	-20
oct-23	7.8	7.8	0	7.8	7.9	-10
nov-23	8.0	8.0	0	7.7	7.8	-10
dic-23	8.8	8.5	30	10.6	10.6	0
ene-24	10.7	-	-	13.3	-	-
Próx 12 meses	154.9	161.4	-650	140.9	146.5	-560
2023	140.7	142.4	-170	159.1	146.9	1,220

PRECIOS MINORISTAS (NUCLEO)

Expectativas de inflación minorista (IPC Núcleo-Nacional): variación % MoM

	Mediana (JUL-23)	Mediana (JUN-23)	Var bps	Promedio (JUL-23)	Promedio (JUN-23)	Var bps
jul-23	7.0	7.5	-50	7.4	7.8	-40
ago-23	7.8	7.6	20	7.9	7.9	0
sep-23	7.8	7.8	0	7.9	8.1	-20
oct-23	7.7	7.8	-10	8.0	8.1	-10
nov-23	7.8	7.9	-10	8.1	8.1	0
dic-23	8.8	8.7	10	9.7	9.8	-10
ene-24	11.4	-	-	12.8	-	-
Próx 12 meses	142.2	141.0	120	156.8	146.0	1,080
2023	160.0	162.7	-270	141.6	146.7	-510



VARIABLES MACROECONÓMICAS

Estimaciones del Consenso y REM del BCRA

POLÍTICA MONETARIA

Expectativas de Tasa de Política Monetaria: BADLAR Bnacos Privados, TNA, %

	Mediana (JUL-23)	Mediana (JUN-23)	Var bps	Promedio (JUL-23)	Promedio (JUN-23)	Var bps
ago-23	92.50	93.00	-50	92.85	92.98	-13
sep-23	92.60	93.00	-40	92.64	92.88	-24
oct-23	93.00	93.20	-20	92.72	93.38	-66
nov-23	93.23	93.33	-10	93.77	94.40	-63
dic-23	97.00	97.00	0	102.59	108.10	-551
ene-24	101.70	-	-	111.79	-	-
Próx 12 meses	84.55	90.35	-580	76.90	83.21	-631
2023	97.00	97.00	0	102.59	108.10	-551

RESULTADO PRIMARIO DEL SECTOR PÚBLICO NACIONAL NO FINANCIERO

Expectativas de Resultado Primario del SPNF: variación en billones de ARS

	Mediana (JUL-23)	Mediana (JUN-23)	Var Bn de ARS	Promedio (JUL-23)	Promedio (JUN-23)	Var Bn de ARS
2023	-4,144.0	-4,355.0	211.0	-3,790.0	-4,104.0	314.0
2024	-3,050.0	-3,500.0	450.0	-2,703.0	-2,703.0	0.0

TIPO DE CAMBIO

Expectativas de tipo de cambio nominal: USDARS (Mayorista)

	Precio Spot	Mediana (JUL-23)	Mediana (JUN-23)	Var % con Spot	Promedio (JUL-23)	Promedio (JUN-23)	Var % con Spot
ago-23	350.00	286.14	286.14	22.3%	286.33	287.65	22.2%
sep-23	350.00	307.20	306.90	13.9%	307.47	308.85	13.8%
oct-23	350.00	329.82	330.02	6.1%	330.01	332.02	6.1%
nov-23	350.00	355.00	353.50	-1.4%	354.94	354.46	-1.4%
dic-23	350.00	423.22	407.52	-17.3%	443.16	441.95	-21.0%
ene-24	350.00	499.10	-	-	519.82	-	-
Próx 12 meses	350.00	740.28	690.88	-52.7%	784.38	744.29	-55.4%
2023	350.00	423.22	407.52	-17.3%	443.16	441.95	-21.0%



CALENDARIO BURSÁTIL

Septiembre de 2023

Fecha	Evento
5-septiembre	Pago de renta – BU4D3, BUD23, DH51O, DH52O, RICMO, RICNO, RIP1O, RZ5BO, VSCL0
5-septiembre	Pago de amortización – BU4D3, BUD23
6-septiembre	Pago de renta – BNM24, BNM25, BNS23, CNP2O, PNHCO, RE3BO, RIQ1O, VSCGO
6-septiembre	Pago de amortización – BNS23, CNP2O, PNHCO
7-septiembre	Pago de renta – JNC2O, PQCKO, RFCBO, RZ6BO, TLC9O, TYCXO
7-septiembre	Pago de amortización – JNC2O, RZ6BO
8-septiembre	Pago de renta – AER3O, CP17O, CXCNO, DR8AO, GYC3O, SDS5O
8-septiembre	Pago de amortización – AER3O, CP17O, CXCNO
9-septiembre	Pago de renta – RIS1O, TLCDO, TLCEO
9-septiembre	Pago de amortización – TLCEO
10-septiembre	Pago de renta – MI31, RIR1O, RND25, TLC7O, VSC7O, VSC8O
10-septiembre	Pago de amortización – MI31
12-septiembre	Pago de renta – MSSAO
13-septiembre	Pago de renta – CS35O, CUC7O
13-septiembre	Pago de amortización – CS35O
14-septiembre	Pago de renta – CXCEO, LEC3O, PNPCO, PNQCO
14-septiembre	Pago de amortización – CXCEO
15-septiembre	Pago de renta – BDC31, CA31, CH31, CT31, ER31, JUM31, MIM31, ND31, PBM31, PMM31, PQCEO, PR13, PU31, RIM31, RN31, SA31, SE31, SJ31, ST31, STC8O, STC9O, TF31, TU31
15-septiembre	Pago de amortización – PR13, STC8O, STC9O
16-septiembre	Pago de renta – CNQ2O, FTK1O, HJC9O, MXC3O, NLCBO, NLCDO, PBM24, VSCEO
16-septiembre	Pago de amortización – FTK1O
17-septiembre	Pago de renta – CP22O, CP23O, PQCHO
18-septiembre	Pago de renta – HJC6O, VSCAO, X18S3
18-septiembre	Pago de amortización – X18S3
19-septiembre	Pago de renta – GS27, LIC4O, PMM29, TS27
19-septiembre	Pago de amortización – PMM29
20-septiembre	Pago de renta – BGM24, CXCL0, JUS22, PUC1O
20-septiembre	Pago de amortización – CXCL0, JUS22
21-septiembre	Pago de renta – BSCMO, CXCBO, DHS4O, LRS4O, RA31O
21-septiembre	Pago de amortización – BSCMO, CXCBO, LRS4O
22-septiembre	Pago de renta – BAO23, TD26
22-septiembre	Pago de amortización – TD26
23-septiembre	Pago de renta – CF4BO, GN36O
23-septiembre	Pago de amortización – CF4BO
24-septiembre	Pago de renta – DH31O, YCA1O
24-septiembre	Pago de amortización – YCA1O
25-septiembre	Pago de renta – HJC7O, MTCHO, MTCIO, TX24
27-septiembre	Pago de renta – ROC1O, TFS23
27-septiembre	Pago de amortización – ROC1O, TFS23
28-septiembre	Pago de renta – GOC1O, GOC3O, RZ7BO
28-septiembre	Pago de amortización – LBS23, XBS23
29-septiembre	Pago de renta – BDC24, DRS9O, GYC1O, RNC21, TDS23
29-septiembre	Pago de amortización – GYC1O, TDS23
30-septiembre	Pago de renta – BN2M4; BN2M6; BN2S4; BNM26; BNS24; IRCBO; IRCD0; MTCGO; PAA0; PAE0; PAE5; PAP0; PARA; PARE; PARP; PARY; PAVA; PAVP; PAVY; PAY0; PAY5; PBS24; T2V4; YMCJO



¿Tiene algún comentario y/o pregunta?

Contáctenos:



Este reporte ha sido elaborado en base a información obtenida de: *Thomson Reuters, Bloomberg, Valor Futuro, FMI, CEPAL, Ámbito Financiero, Cronista Comercial, Buenos Aires Económico, La Nación, Clarín, InfoBAE, InfoBAE América, América Economía, AP, Marketwatch, Yahoo!, BBC, 5dias.com, iProfesional, The Economist, Benzinga, WSJ, Bolsar, Seeking Alpha, CNBC, Economía y Finanzas, CNN, Télam, BID, USDA, CME, OCDE, informes de gobiernos, bancos y bolsas, diarios oficiales, entre otros, todos de circulación masiva y pública.*

Este informe fue confeccionado sólo con propósitos informativos y su intención no es la de recomendar la compra o venta de algún título o bien. Contiene información disponible en el mercado y dichas fuentes se presumen confiables. Sin embargo, no podemos garantizar la integridad o exactitud de las mismas. Todas las opiniones y estimaciones reflejan el juicio actual del autor a la fecha del informe, y su contenido puede ser objeto de cambios sin previo aviso. El valor de una inversión ha de variar como resultado de los cambios en el mercado. La información contenida en este informe no es una predicción de resultados, ni asegura alguno. En la medida en que la información obtenida del informe pueda considerarse como recomendación, dicha información es impersonal y no está adaptada a las necesidades de inversión de ninguna persona específica. Por lo tanto, no refleja todos los riesgos u otros temas relevantes relacionados a las inversiones en los activos mencionados. Antes de realizar una inversión, los interesados deben asegurarse que comprenden las condiciones y cualquier riesgo asociado. Recomendamos que se asesore con un profesional. Research for Traders no recibe ninguna remuneración a consecuencia de las operaciones realizadas sobre activos mencionados en el informe. Se encuentra prohibido reenviar este mail con sus contenidos y/o adjuntos dado que es información privada para aquellos a los cuales se les ha remitido. Por lo tanto, no podrá ser reproducido ni total ni parcialmente sin previa autorización de Research for Traders.

This report is for information purposes only and is not intended to recommend the purchase or sale of any security or investment. It contains information available in the market and such sources presumed to be reliable. However, no guarantees can be made about the integrity or accuracy of it. All opinions and estimates herein reflect the current judgment of the author as of the date of the report and it may be subject to change without notice. The value of any investment may fluctuate as a result of market changes. The information in this report is not a prediction of results and no assurances are given with respect thereto. If any information from the report can be considered as a recommendation, such information is impersonal and not suitable to the investment needs of any specific person. Therefore, it does not disclose all the risks and other significant issues related to an investment in assets mentioned. Before making an investment, potential investors should ensure that they understand the terms and the associated risks. We strongly recommend looking for professional advice. Research for Traders receives no compensation as a result of transactions on assets mentioned in the report. It is not allowed to forward this mail with its contents and/or attachments as it is private information for those who are sent to them. Therefore, it may not be reproduced in whole or in part without prior approval of Research for Traders.

Copyright 2011 © Research for Traders. All rights reserved.